

Anti-CD168 antibody [EPR4055] ab108339

KO 評価済 リコンビナント RabMAb

7 References 画像数 12

製品の概要

製品名	Anti-CD168 antibody [EPR4055]
製品の詳細	Rabbit monoclonal [EPR4055] to CD168
由来種	Rabbit
アプリケーション	適用あり: WB, IP, IHC-P 適用なし: ICC/IF
種交差性	交差種: Human
免疫原	Synthetic peptide. This information is proprietary to Abcam and/or its suppliers.
ポジティブ・コントロール	T47-D MCF-7, SKBR-3 and LnCaP cell lysate Paraffin-embedded human breast carcinoma tissue Paraffin-embedded human testis tissue IP: T-47D whole cell lysate.
特記事項	<p>This product is a recombinant monoclonal antibody, which offers several advantages including:</p> <ul style="list-style-type: none"> - High batch-to-batch consistency and reproducibility - Improved sensitivity and specificity - Long-term security of supply - Animal-free production <p>For more information see here.</p> <p>Our RabMAb[®] technology is a patented hybridoma-based technology for making rabbit monoclonal antibodies. For details on our patents, please refer to RabMAb[®] patents.</p>

製品の特性

製品の状態	Liquid
保存方法	Shipped at 4°C. Store at -20°C. Stable for 12 months at -20°C.
バッファー	pH: 7.20 Preservative: 0.05% Sodium azide Constituents: 40% Glycerol (glycerin, glycerine), 9.85% Tris glycine, 50% Tissue culture supernatant
精製度	Protein A purified
ポリ/モノ	モノクローナル
クローン名	EPR4055

アイソタイプ

IgG

アプリケーション

The Abpromise guarantee

Abpromise保証は、次のテスト済みアプリケーションにおけるab108339の使用に適用されます

アプリケーションノートには、推奨の開始希釈率がありますが、適切な希釈率につきましてはご確認ください。

アプリケーション	Abreviews	特記事項
WB		1/1000 - 1/10000. Predicted molecular weight: 84 kDa.
IP		1/10 - 1/100.
IHC-P		1/100 - 1/250. Perform heat mediated antigen retrieval with citrate buffer pH 6 before commencing with IHC staining protocol.

追加情報

Is unsuitable for ICC/IF.

ターゲット情報

機能

Involved in cell motility. When hyaluronan binds to HMMR, the phosphorylation of a number of proteins, including the focal adhesion kinase occurs. May also be involved in cellular transformation and metastasis formation, and in regulating extracellular-regulated kinase (ERK) activity.

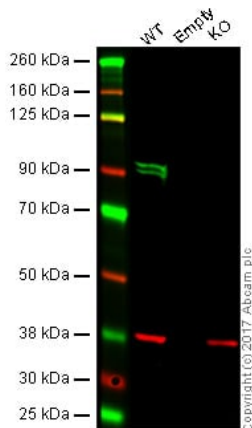
組織特異性

Expressed in breast cancer cell lines and in normal breast tissue.

細胞内局在

Cell surface. Cytoplasm.

画像



Western blot - Anti-CD168 antibody [EPR4055]
(ab108339)

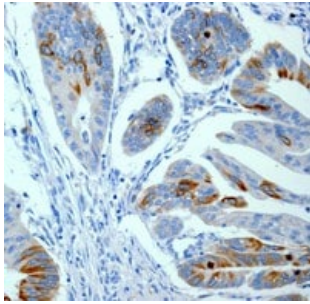
Lane 1: Wild type HAP1 whole cell lysate (20 µg)

Lane 2: Empty knockout HAP1 whole cell lysate (20 µg)

Lane 3: CD168 whole cell lysate (20 µg)

Lanes 1 - 3: Merged signal (red and green). Green - ab108339 observed at 90 kDa. Red - loading control, **ab9484**, observed at 37 kDa.

ab108339 was shown to specifically react with CD168 when CD168 knockout samples were used. Wild-type and Empty knockout samples were subjected to SDS-PAGE. Ab108339 and **ab9484** (Mouse anti GAPDH loading control) were incubated overnight at 4°C at 1000 dilution and 1/10000 dilution respectively. Blots were developed with Goat anti-Rabbit IgG H&L (IRDye® 800CW) preabsorbed **ab216773** and Goat anti-Mouse IgG H&L (IRDye® 680RD) preabsorbed **ab216776** secondary antibodies at 1/20000 dilution for 1 hour at room temperature before imaging.



Immunohistochemistry (Formalin/PFA-fixed paraffin-embedded sections) - Anti-CD168 antibody [EPR4055] (ab108339)

ab108339, at 1/100, staining CD168 in paraffin-embedded human breast carcinoma tissue by Immunohistochemistry.

Perform heat mediated antigen retrieval with citrate buffer pH 6 before commencing with IHC staining protocol.



Immunoprecipitation - Anti-CD168 antibody [EPR4055] (ab108339)

Purified ab108339 at 1/50 dilution (2µg) immunoprecipitating CD168 in T-47D whole cell lysate.

Lane 1 (input): T-47D (Human ductal breast epithelial tumor epithelial cell) whole cell lysate 10µg

Lane 2 (+): ab108339 + T-47D whole cell lysate.

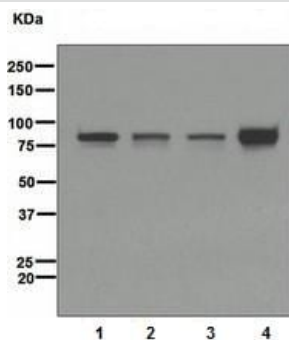
Lane 3 (-): Rabbit monoclonal IgG (**ab172730**) instead of ab108339 in T-47D whole cell lysate.

VeriBlot for IP Detection Reagent (HRP) (**ab131366**) (1/1000 dilution) was used for Western blotting.

Blocking Buffer and concentration: 5% NFDm/TBST.

Diluting buffer and concentration: 5% NFDm/TBST.

Observed band size: 85 kDa



Western blot - Anti-CD168 antibody [EPR4055] (ab108339)

All lanes : Anti-CD168 antibody [EPR4055] (ab108339) at 1/1000 dilution

Lane 1 : T47-D cell lysate

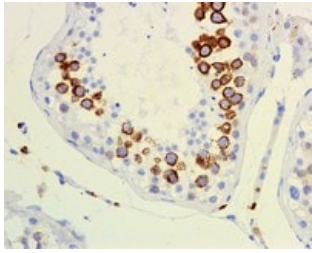
Lane 2 : MCF-7 cell lysate

Lane 3 : SKBR-3 cell lysate

Lane 4 : LnCaP cell lysate

Lysates/proteins at 10 µg per lane.

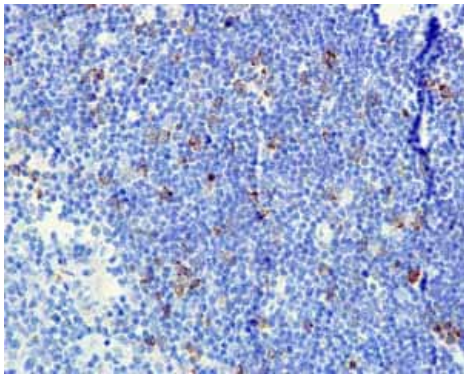
Predicted band size: 84 kDa



Immunohistochemistry (Formalin/PFA-fixed paraffin-embedded sections) - Anti-CD168 antibody
[EPR4055] (ab108339)

ab108339, at 1/100, staining CD168 in paraffin-embedded human testis tissue by Immunohistochemistry.

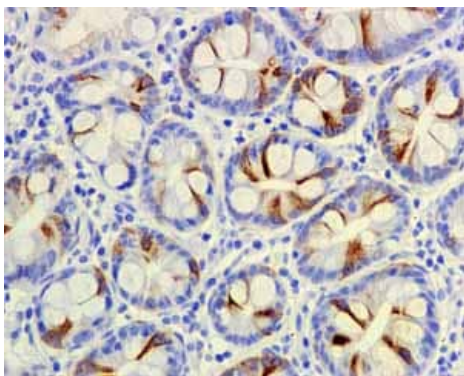
Perform heat mediated antigen retrieval with citrate buffer pH 6 before commencing with IHC staining protocol.



Immunohistochemistry (Formalin/PFA-fixed paraffin-embedded sections) - Anti-CD168 antibody
[EPR4055] (ab108339)

ab108339 showing positive staining in Normal thymus tissue.

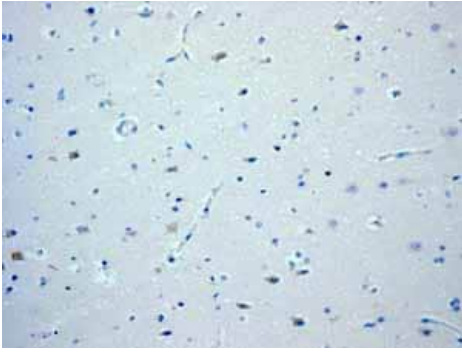
Perform heat mediated antigen retrieval with citrate buffer pH 6 before commencing with IHC staining protocol.



Immunohistochemistry (Formalin/PFA-fixed paraffin-embedded sections) - Anti-CD168 antibody
[EPR4055] (ab108339)

ab108339 showing positive staining in Normal stomach tissue.

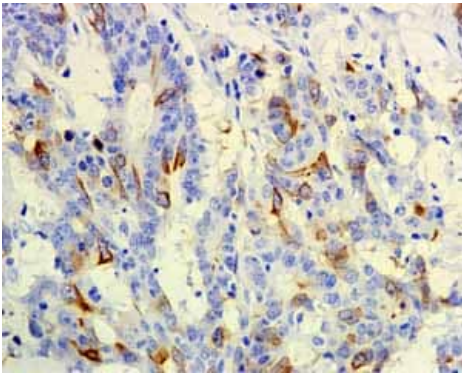
Perform heat mediated antigen retrieval with citrate buffer pH 6 before commencing with IHC staining protocol.



Immunohistochemistry (Formalin/PFA-fixed paraffin-embedded sections) - Anti-CD168 antibody
[EPR4055] (ab108339)

ab108339 showing negative staining in Normal brain tissue.

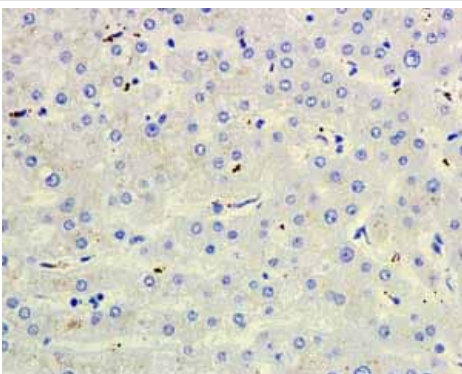
Perform heat mediated antigen retrieval with citrate buffer pH 6 before commencing with IHC staining protocol.



Immunohistochemistry (Formalin/PFA-fixed paraffin-embedded sections) - Anti-CD168 antibody
[EPR4055] (ab108339)

ab108339 showing positive staining in Colonic adenocarcinoma tissue.

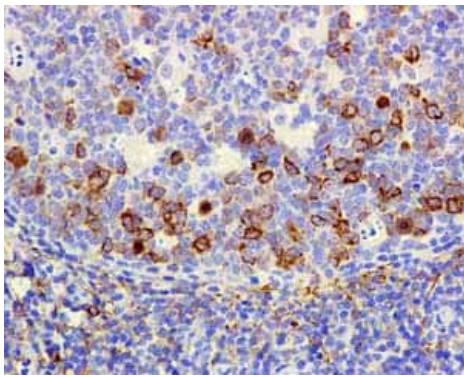
Perform heat mediated antigen retrieval with citrate buffer pH 6 before commencing with IHC staining protocol.



Immunohistochemistry (Formalin/PFA-fixed paraffin-embedded sections) - Anti-CD168 antibody
[EPR4055] (ab108339)

ab108339 showing negative staining in Normal liver tissue.

Perform heat mediated antigen retrieval with citrate buffer pH 6 before commencing with IHC staining protocol.

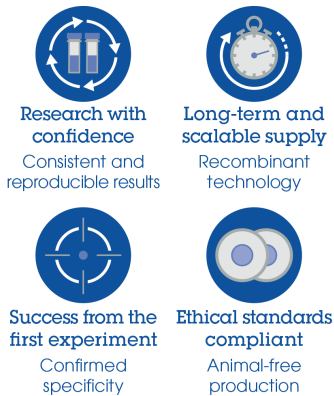


Immunohistochemistry (Formalin/PFA-fixed paraffin-embedded sections) - Anti-CD168 antibody [EPR4055] (ab108339)

ab108339 showing positive staining in Normal tonsil tissue.

Perform heat mediated antigen retrieval with citrate buffer pH 6 before commencing with IHC staining protocol.

Why choose a recombinant antibody?



Anti-CD168 antibody [EPR4055] (ab108339)

Please note: All products are "FOR RESEARCH USE ONLY. NOT FOR USE IN DIAGNOSTIC PROCEDURES"

Our Abpromise to you: Quality guaranteed and expert technical support

- Replacement or refund for products not performing as stated on the datasheet
- Valid for 12 months from date of delivery
- Response to your inquiry within 24 hours
- We provide support in Chinese, English, French, German, Japanese and Spanish
- Extensive multi-media technical resources to help you
- We investigate all quality concerns to ensure our products perform to the highest standards

If the product does not perform as described on this datasheet, we will offer a refund or replacement. For full details of the Abpromise, please visit <https://www.abcam.co.jp/abpromise> or contact our technical team.

Terms and conditions

- Guarantee only valid for products bought direct from Abcam or one of our authorized distributors