

# Anti-CD160 antibody [CNX46-3] ab91101

**1 References** [画像数 1](#)

### 製品の概要

製品名	Anti-CD160 antibody [CNX46-3]
製品の詳細	Rat monoclonal [CNX46-3] to CD160
由来種	Rat
アプリケーション	<b>適用あり:</b> Flow Cyt
種交差性	<b>交差種:</b> Mouse
免疫原	Recombinant Mouse CD160-Fc protein
ポジティブ・コントロール	Flow Cyt: Mouse (C57BL/6) splenocytes
特記事項	<p>The Life Science industry has been in the grips of a reproducibility crisis for a number of years. Abcam is leading the way in addressing this with our range of recombinant monoclonal antibodies and knockout edited cell lines for gold-standard validation. Please check that this product meets your needs before purchasing.</p> <p>If you have any questions, special requirements or concerns, please send us an inquiry and/or contact our Support team ahead of purchase. Recommended alternatives for this product can be found below, along with publications, customer reviews and Q&amp;As</p>

### 製品の特性

製品の状態	Liquid
保存方法	Shipped at 4°C. Store at +4°C short term (1-2 weeks). Store at -20°C or -80°C. Avoid freeze / thaw cycle.
バッファー	<p>pH: 7.20</p> <p>Preservative: 0.09% Sodium azide</p> <p>Constituent: PBS</p>
精製度	Protein A purified
ポリ/モノ	モノクローナル
クローン名	CNX46-3
アイソタイプ	IgG2a
軽鎖の種類	kappa

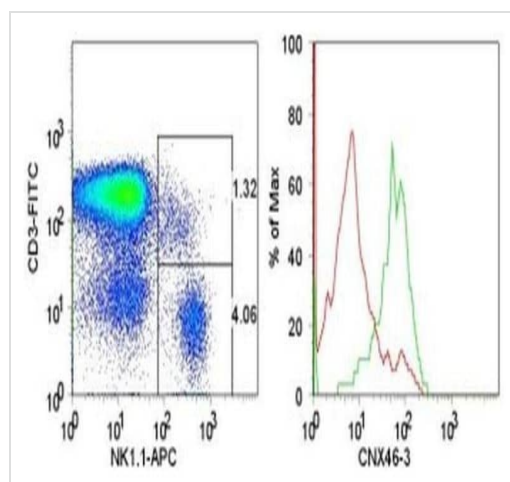
**The Abpromise guarantee** Abpromise保証は、 次のテスト済みアプリケーションにおけるab91101の使用に適用されます  
アプリケーションノートには、推奨の開始希釈率がありますが、適切な希釈率につきましてはご検討ください。

アプリケーション	Abreviews	特記事項
Flow Cyt		Use at an assay dependent concentration. 1 µg/test

## ターゲット情報

機能	Receptor showing broad specificity for both classical and non-classical MHC class I molecules.
組織特異性	Expressed in spleen, peripheral blood, and small intestine. Expression is restricted to functional NK and T cytotoxic lymphocytes.
配列類似性	Contains 1 Ig-like V-type (immunoglobulin-like) domain.
細胞内局在	Cell membrane.

## 画像



Flow cytometry analysis of C57BL/6 splenocytes labelling CD160 with ab91101 at 0.5 µg, followed by F (ab')2 Anti-Rat IgG PE and subsequently with anti-Mouse CD3e FITC and anti-Mouse NK1-1 APC. The histogram (right) demonstrates staining of **ab911001** on NK1-1+CD3+ cells (red histogram) and NK1-1-CD3+ cells (green histogram), as gated in the dot plot (left).

Flow Cytometry - Anti-CD160 antibody [CNX46-3]  
(ab91101)

**Please note:** All products are "FOR RESEARCH USE ONLY. NOT FOR USE IN DIAGNOSTIC PROCEDURES"

## Our Abpromise to you: Quality guaranteed and expert technical support

- Replacement or refund for products not performing as stated on the datasheet
- Valid for 12 months from date of delivery
- Response to your inquiry within 24 hours
- We provide support in Chinese, English, French, German, Japanese and Spanish
- Extensive multi-media technical resources to help you

- We investigate all quality concerns to ensure our products perform to the highest standards

If the product does not perform as described on this datasheet, we will offer a refund or replacement. For full details of the Abpromise, please visit <https://www.abcam.co.jp/abpromise> or contact our technical team.

### **Terms and conditions**

---

- Guarantee only valid for products bought direct from Abcam or one of our authorized distributors