

# Anti-CD16 antibody [KD1] ab124049

**1 References** [画像数 1](#)

### 製品の概要

製品名	Anti-CD16 antibody [KD1]
製品の詳細	Mouse monoclonal [KD1] to CD16
由来種	Mouse
アプリケーション	<b>適用あり:</b> Flow Cyt
種交差性	<b>交差種:</b> Human <b>非交差種:</b> Rat, Dog
免疫原	The details of the immunogen for this antibody are not available.
ポジティブ・コントロール	Human peripheral blood lymphocytes
特記事項	ab124049 should be stored undiluted.
	A number of studies have demonstrated that clone KD1 can be used to identify CD16 in a range of species including bovine and ovine.
	The Life Science industry has been in the grips of a reproducibility crisis for a number of years. Abcam is leading the way in addressing this with our range of recombinant monoclonal antibodies and knockout edited cell lines for gold-standard validation. Please check that this product meets your needs before purchasing.
	If you have any questions, special requirements or concerns, please send us an inquiry and/or contact our Support team ahead of purchase. Recommended alternatives for this product can be found below, along with publications, customer reviews and Q&As

### 製品の特性

製品の状態	Liquid
保存方法	Shipped at 4°C. Store at +4°C short term (1-2 weeks). Store at -20°C long term.
バッファー	Preservative: 0.09% Sodium azide Constituent: 99% PBS
精製度	Protein G purified
一次抗体 備考	A number of studies have demonstrated that clone KD1 can be used to identify CD16 in a range of species including bovine and ovine.
ポリ/モノ	モノクローナル

クローン名	KD1
アイソタイプ	IgG2a

## アプリケーション

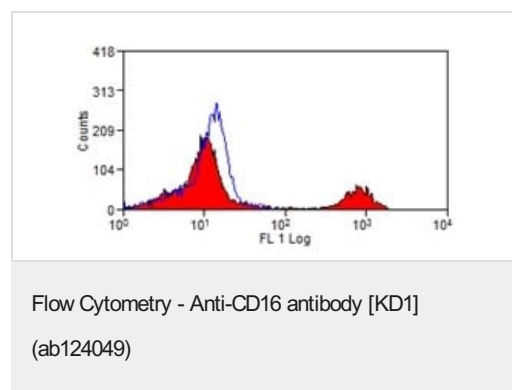
**The Abpromise guarantee** Abpromise保証は、 次のテスト済みアプリケーションにおけるab124049の使用に適用されます  
アプリケーションノートには、推奨の開始希釈率がありますが、適切な希釈率につきましてはご検討ください。

アプリケーション	Abreviews	特記事項
Flow Cyt		Use at an assay dependent concentration. Use 100 µl of the suggested working dilution to label $1 \times 10^6$ cells in 100 µl. <b>ab170191</b> - Mouse monoclonal IgG2a, is suitable for use as an isotype control with this antibody.

## ターゲット情報

機能	Receptor for the Fc region of IgG. Binds complexed or aggregated IgG and also monomeric IgG. Mediates antibody-dependent cellular cytotoxicity (ADCC) and other antibody-dependent responses, such as phagocytosis.
組織特異性	Expressed on natural killer cells, macrophages, subpopulation of T-cells, immature thymocytes and placental trophoblasts.
配列類似性	Contains 2 Ig-like C2-type (immunoglobulin-like) domains.
翻訳後修飾	Glycosylated. Contains high mannose- and complex-type oligosaccharides. The soluble form is produced by a proteolytic cleavage.
細胞内局在	Cell membrane. Secreted. Exists also as a soluble receptor.

## 画像



**ab124032** staining CD16 in Human peripheral blood lymphocytes by Flow Cytometry, followed by Rabbit F(ab')<sub>2</sub> anti Mouse IgG:FITC.

**Please note:** All products are "FOR RESEARCH USE ONLY. NOT FOR USE IN DIAGNOSTIC PROCEDURES"

**Our Abpromise to you: Quality guaranteed and expert technical support**

- Replacement or refund for products not performing as stated on the datasheet
- Valid for 12 months from date of delivery
- Response to your inquiry within 24 hours
- We provide support in Chinese, English, French, German, Japanese and Spanish
- Extensive multi-media technical resources to help you
- We investigate all quality concerns to ensure our products perform to the highest standards

If the product does not perform as described on this datasheet, we will offer a refund or replacement. For full details of the Abpromise, please visit <https://www.abcam.co.jp/abpromise> or contact our technical team.

#### **Terms and conditions**

---

- Guarantee only valid for products bought direct from Abcam or one of our authorized distributors