

# Anti-CD15 antibody [MMA], prediluted ab7495

**1 References** [画像数 1](#)

## 製品の概要

|              |   |
|--------------|---|
| 製品名          | Anti-CD15 antibody [MMA], prediluted  |
| 製品の詳細        | Mouse monoclonal [MMA] to CD15, prediluted  |
| 由来種          | Mouse   |
| 特異性          | This antibody reacts with a 220 kD protein.   |
| アプリケーション     | <b>適用あり:</b> IHC-P  |
| 種交差性         | <b>交差種:</b> Human   |
| 免疫原          | Tissue, cells or virus corresponding to Human CD15. U937 histiocytic cell line.   |
| ポジティブ・コントロール | Tonsil.   |
| 特記事項         | <p>The Life Science industry has been in the grips of a reproducibility crisis for a number of years. Abcam is leading the way in addressing this with our range of recombinant monoclonal antibodies and knockout edited cell lines for gold-standard validation. Please check that this product meets your needs before purchasing.</p> <p>If you have any questions, special requirements or concerns, please send us an inquiry and/or contact our Support team ahead of purchase. Recommended alternatives for this product can be found below, along with publications, customer reviews and Q&amp;As</p> |

## 製品の特性

|        |   |
|--------|---|
| 製品の状態  | Liquid  |
| 保存方法   | Shipped at 4°C. Store at +4°C short term (1-2 weeks). Store at -20°C or -80°C. Avoid freeze / thaw cycle. |
| バッファー  | pH: 7.3<br>Constituent: PBS   |
| 精製度    | Protein A purified  |
| ポリ/モノ  | モノクローナル   |
| クローン名  | MMA   |
| アイソタイプ | IgM   |
| 軽鎖の種類  | kappa   |

**The Abpromise guarantee**      Abpromise保証は、次のテスト済みアプリケーションにおけるab7495の使用に適用されます  
 アプリケーションノートには、推奨の開始希釈率がありますが、適切な希釈率につきましてはご確認ください。

| アプリケーション | Abreviews | 特記事項 |
|----------|-----------|------|
| IHC-P    |           |      |

#### 追加情報

IHC-P: Use at an assay dependent dilution.  
 IHC-Fr: Use at an assay dependent dilution.  
 We suggest an incubation period of 30 minutes at room temperature. However, depending upon the fixation conditions and the staining system employed, optimal incubation should be determined by the end user. Formalin fixed paraffin embedded tissue sections require high temperature antigen unmasking with 10 mM citrate buffer, pH 6.0 prior to immunostaining.  
  
 Not tested in other applications.  
 Optimal dilutions/concentrations should be determined by the end user.

#### ターゲット情報

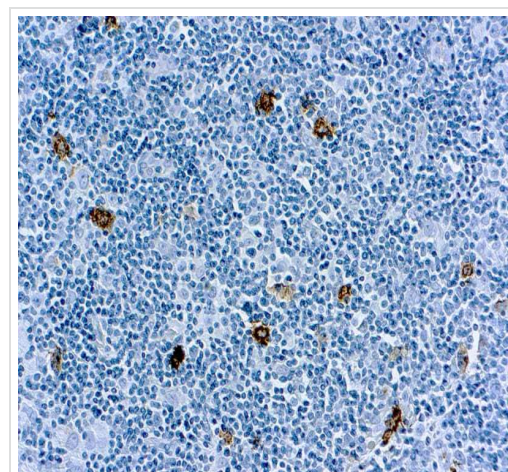
##### 関連性

CD15 is a carbohydrate adhesion molecule (and not a protein) that mediates phagocytosis and chemotaxis. Synthesis is directed by FUT4 in lymphoid cells and mature granulocytes, and by FUT9 in promyelocytes and monocytes.

##### 細胞内局在

Golgi Apparatus; Membrane-bound form in trans cisternae of Golgi.

#### 画像



Immunohistochemistry (Formalin fixed paraffin-embedded sections)  
 analysis of human tonsil tissue labelling CD15 with ab7495.

Immunohistochemistry (Formalin/PFA-fixed paraffin-embedded sections) - Anti-CD15 antibody [MMA], prediluted (ab7495)

**Please note:** All products are "FOR RESEARCH USE ONLY. NOT FOR USE IN DIAGNOSTIC PROCEDURES"

### **Our Abpromise to you: Quality guaranteed and expert technical support**

---

- Replacement or refund for products not performing as stated on the datasheet
- Valid for 12 months from date of delivery
- Response to your inquiry within 24 hours
  
- We provide support in Chinese, English, French, German, Japanese and Spanish
- Extensive multi-media technical resources to help you
- We investigate all quality concerns to ensure our products perform to the highest standards

If the product does not perform as described on this datasheet, we will offer a refund or replacement. For full details of the Abpromise, please visit <https://www.abcam.co.jp/abpromise> or contact our technical team.

### **Terms and conditions**

---

- Guarantee only valid for products bought direct from Abcam or one of our authorized distributors