

Anti-CD15 antibody [MEM-158] ab665

★★★★★ [1 Abreviews](#) [1 References](#) [画像数 2](#)

製品の概要

製品名	Anti-CD15 antibody [MEM-158]
製品の詳細	Mouse monoclonal [MEM-158] to CD15
由来種	Mouse
アプリケーション	適用あり: Flow Cyt
種交差性	交差種: Human
免疫原	Tissue, cells or virus corresponding to Human CD15. Human granulocytes
ポジティブ・コントロール	Flow Cyt: Human peripheral whole blood.
特記事項	<p>The Life Science industry has been in the grips of a reproducibility crisis for a number of years. Abcam is leading the way in addressing this with our range of recombinant monoclonal antibodies and knockout edited cell lines for gold-standard validation. Please check that this product meets your needs before purchasing.</p> <p>If you have any questions, special requirements or concerns, please send us an inquiry and/or contact our Support team ahead of purchase. Recommended alternatives for this product can be found below, along with publications, customer reviews and Q&As</p>

製品の特性

製品の状態	Liquid
保存方法	Shipped at 4°C. Store at +4°C short term (1-2 weeks). Upon delivery aliquot. Store at -20°C or -80°C. Avoid freeze / thaw cycle.
バッファー	<p>pH: 8.00</p> <p>Preservative: 0.097% Sodium azide</p> <p>Constituent: Tris buffered saline</p>
精製度	Proprietary Purification
特記事項(精製)	Purified from TCS. Purified by precipitation and chromatography. Purity >95% by SDS-PAGE.
ポリ/モノ	モノクローナル
クローン名	MEM-158
アイソタイプ	IgM

The Abpromise guarantee **Abpromise保証は、** 次のテスト済みアプリケーションにおけるab665の使用に適用されます
 アプリケーションノートには、推奨の開始希釈率がありますが、適切な希釈率につきましてはご検討ください。

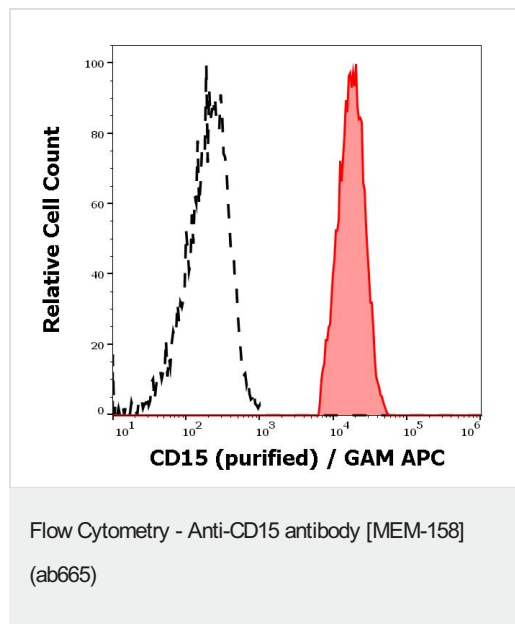
アプリケーション	Abreviews	特記事項
Flow Cyt		Use a concentration of 1 - 4 µg/ml. ab91545 - Mouse monoclonal IgM, is suitable for use as an isotype control with this antibody.

ターゲット情報

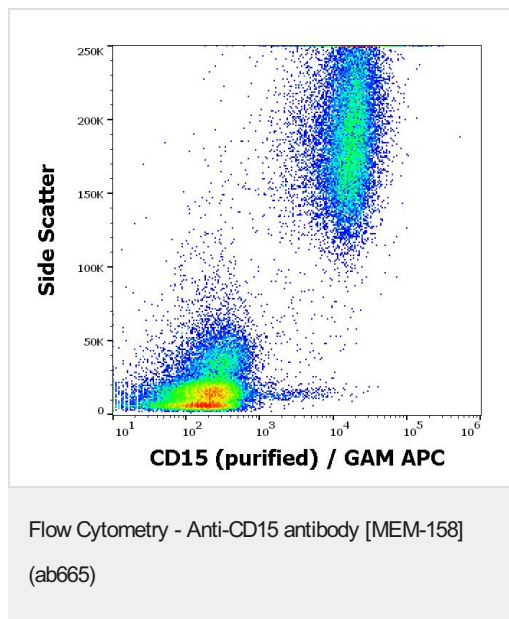
関連性 CD15 is a carbohydrate adhesion molecule (and not a protein) that mediates phagocytosis and chemotaxis. Synthesis is directed by FUT4 in lymphoid cells and mature granulocytes, and by FUT9 in promyelocytes and monocytes.

細胞内局在 Golgi Apparatus; Membrane-bound form in trans cisternae of Golgi.

画像



Flow Cytometry analysis of human peripheral whole blood labeling CD15 (surface staining) with ab665 at 0.3 µg/mL. CD15 positive human neutrophil granulocytes (red-filled). CD15 negative lymphocytes (black-dashed).



Flow cytometry surface staining pattern of human peripheral blood stained using Anti-CD15 antibody [MEM-158] (ab6665) at 0.3 µg/mL.

Please note: All products are "FOR RESEARCH USE ONLY. NOT FOR USE IN DIAGNOSTIC PROCEDURES"

Our Abpromise to you: Quality guaranteed and expert technical support

- Replacement or refund for products not performing as stated on the datasheet
- Valid for 12 months from date of delivery
- Response to your inquiry within 24 hours
- We provide support in Chinese, English, French, German, Japanese and Spanish
- Extensive multi-media technical resources to help you
- We investigate all quality concerns to ensure our products perform to the highest standards

If the product does not perform as described on this datasheet, we will offer a refund or replacement. For full details of the Abpromise, please visit <https://www.abcam.co.jp/abpromise> or contact our technical team.

Terms and conditions

- Guarantee only valid for products bought direct from Abcam or one of our authorized distributors