

Anti-CD11b antibody [M1/70] ab8878

リコンビナント

★★★★★ **17 Abreviews** **138 References** 画像数 4

製品の概要

製品名	Anti-CD11b antibody [M1/70]
製品の詳細	Rat monoclonal [M1/70] to CD11b
由来種	Rat
アプリケーション	適用あり: ICC/IF, Flow Cyt 適用なし: IHC-P
種交差性	交差種: Mouse, Human
免疫原	Tissue, cells or virus. This information is proprietary to Abcam and/or its suppliers.
ポジティブ・コントロール	Flow Cytometry: RAW 264.7 cells, Human peripheral blood mononuclear cell (PBMC), Mouse peripheral blood mononuclear cell (PBMC) IF/ICC: RAW 264.7 cells
特記事項	<p>This antibody clone is manufactured by Abcam. If you require a custom buffer formulation or conjugation for your experiments, please contact orders@abcam.com.</p> <p>This product is a recombinant monoclonal antibody, which offers several advantages including:</p> <ul style="list-style-type: none"> - High batch-to-batch consistency and reproducibility - Improved sensitivity and specificity - Long-term security of supply - Animal-free production <p>For more information see here.</p>

製品の特性

製品の状態	Liquid
保存方法	Shipped at 4°C. Upon delivery aliquot and store at -20°C or -80°C. Avoid repeated freeze / thaw cycles.
バッファー	pH: 7.2 Preservative: 0.01% Sodium azide Constituents: 59% PBS, 0.05% BSA, 40% Glycerol (glycerin, glycerine)
精製度	Protein A purified
ポリ/モノ	モノクローナル
クローン名	M1/70

ミエローマ	NS1
アイソタイプ	IgG2b
軽鎖の種類	unknown

アプリケーション

The Abpromise guarantee **Abpromise保証は、次のテスト済みアプリケーションにおけるab8878の使用に適用されます**
 アプリケーションノートには、推奨の開始希釈率がありますが、適切な希釈率につきましてはご確認ください。

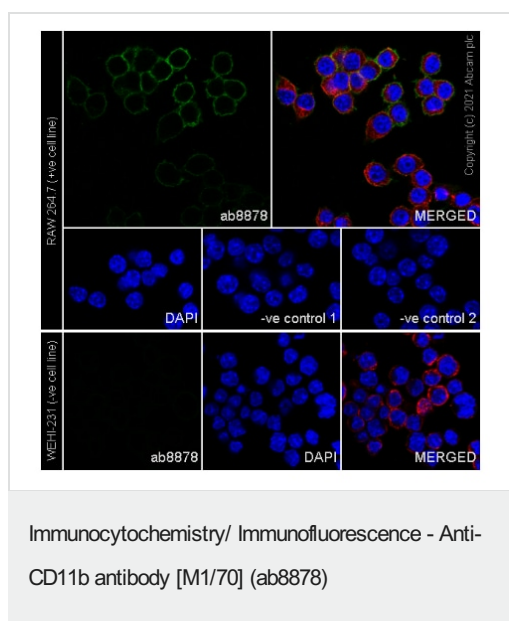
アプリケーション	Abreviews	特記事項
ICC/IF	★★★★★ (4)	1/50.
Flow Cyt	★★★★★ (2)	1/1000 - 1/10000. ab18536 - Rat monoclonal IgG2b, is suitable for use as an isotype control with this antibody.

追加情報 Is unsuitable for IHC-P.

ターゲット情報

機能	Integrin alpha-M/beta-2 is implicated in various adhesive interactions of monocytes, macrophages and granulocytes as well as in mediating the uptake of complement-coated particles. It is identical with CR-3, the receptor for the iC3b fragment of the third complement component. It probably recognizes the R-G-D peptide in C3b. Integrin alpha-M/beta-2 is also a receptor for fibrinogen, factor X and ICAM1. It recognizes P1 and P2 peptides of fibrinogen gamma chain.
組織特異性	Predominantly expressed in monocytes and granulocytes.
関連疾患	Genetic variations in ITGAM has been associated with susceptibility to systemic lupus erythematosus type 6 (SLEB6) [MIM:609939]. Systemic lupus erythematosus (SLE) is a chronic, inflammatory and often febrile multisystemic disorder of connective tissue. It affects principally the skin, joints, kidneys and serosal membranes. It is thought to represent a failure of the regulatory mechanisms of the autoimmune system.
配列類似性	Belongs to the integrin alpha chain family. Contains 7 FG-GAP repeats. Contains 1 VWFA domain.
ドメイン	The integrin I-domain (insert) is a VWFA domain. Integrins with I-domains do not undergo protease cleavage.
細胞内局在	Membrane.

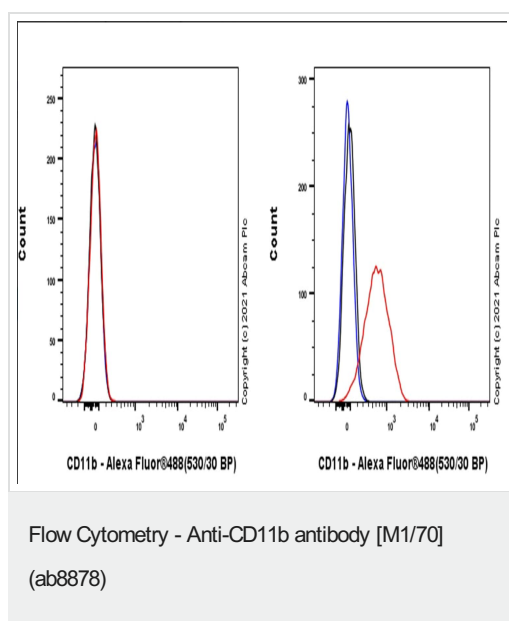
画像



Confocal image showing membranous staining in RAW 264.7 cells.

RAW 264.7, WEHI-231 and THP-1 cells were fixed in 4% PFA and permeabilized with 0.1% Triton X-100. Primary antibody, ab8878 at 1:50 was incubated overnight at 4° C, followed by AlexaFluor® 488-conjugated Goat anti-Rat secondary antibody ([ab150157](#)) at 1/1000 dilution at RT for 45 min. [ab179513](#) Anti-beta Tubulin, used as a counterstain at 1/200 dilution, was co-incubated with ab8878 overnight at 4° C, followed by Alexa Fluor® 594 Goat Anti-Rabbit secondary ([ab150080](#)) at 1/1000 dilution at RT for 45 min. Nucleus were visualized using DAPI.

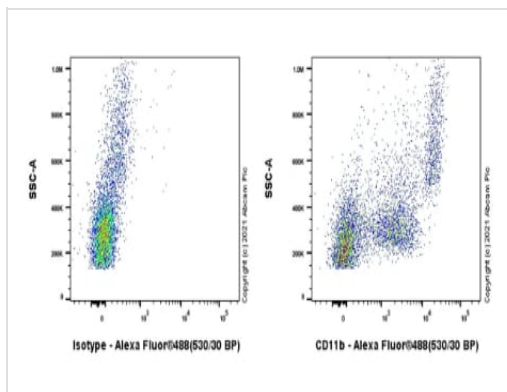
Negative control: WEHI-231 (PMID: 2457584)



Flow Cytometry analysis of WEHI-231 (Mouse B cell lymphoma B lymphocyte, Left) / RAW 264.7 (Mouse Abelson murine leukemia virus-induced tumor macrophage, Right) cells stained for CD11b using AB8878 at a 1/1000 dilution (0.1 µg) (Red) compared to Rat monoclonal IgG - Isotype Control (Black) and cells without incubation with primary antibody and secondary antibody (Blue). Goat F(ab)2 Anti-Rat IgG Fc (Alexa Fluor® 488, [ab150161](#)) at 1/2000 dilution was used as the secondary antibody.

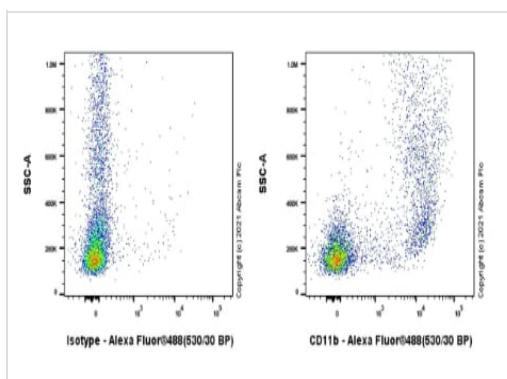
Negative control: WEHI-231.(PMID: 2457584)

Gated on viable cells.



Flow Cytometry - Anti-CD11b antibody [M1/70]
(ab8878)

Flow Cytometry analysis of Human peripheral blood mononuclear cell (PBMC) cells labelling CD11b with AB8878 at a 1/10,000 dilution (0.01 µg) (right) compared to Rat monoclonal IgG - Isotype Control (right). Goat F(ab)2 Anti-Rat IgG Fc (Alexa Fluor® 488, **ab150161**) at 1/2000 dilution was used as the secondary antibody. Gated on viable cells.



Flow Cytometry - Anti-CD11b antibody [M1/70]
(ab8878)

Flow Cytometry analysis of Mouse peripheral blood mononuclear cell (PBMC) cells labelling CD11b with AB8878 at a 1/10,000 dilution (0.01 µg) (right) compared to Rat monoclonal IgG - Isotype Control (right). Goat F(ab)2 Anti-Rat IgG Fc (Alexa Fluor® 488, **ab150161**) at 1/2000 dilution was used as the secondary antibody. Gated on viable cells.

Please note: All products are "FOR RESEARCH USE ONLY. NOT FOR USE IN DIAGNOSTIC PROCEDURES"

Our Abpromise to you: Quality guaranteed and expert technical support

- Replacement or refund for products not performing as stated on the datasheet
- Valid for 12 months from date of delivery
- Response to your inquiry within 24 hours
- We provide support in Chinese, English, French, German, Japanese and Spanish
- Extensive multi-media technical resources to help you
- We investigate all quality concerns to ensure our products perform to the highest standards

If the product does not perform as described on this datasheet, we will offer a refund or replacement. For full details of the Abpromise, please visit <https://www.abcam.co.jp/abpromise> or contact our technical team.

Terms and conditions

- Guarantee only valid for products bought direct from Abcam or one of our authorized distributors