

Anti-CD105 antibody [SN6] ab11414

★★★★★ [6 Abreviews](#) [64 References](#) [画像数 1](#)

製品の概要

製品名	Anti-CD105 antibody [SN6]
製品の詳細	Mouse monoclonal [SN6] to CD105
由来種	Mouse
特異性	ab11414 recognises the human CD105 cell surface antigen.
アプリケーション	適用あり: Flow Cyt 適用なし: WB
種交差性	交差種: Human
免疫原	Synthetic peptide corresponding to Human CD105.
ポジティブ・コントロール	Flow Cyt: KG1 cells.
特記事項	<p>This product should be stored undiluted. Should this product contain a precipitate we recommend microcentrifugation before use.</p> <p>The Life Science industry has been in the grips of a reproducibility crisis for a number of years. Abcam is leading the way in addressing this with our range of recombinant monoclonal antibodies and knockout edited cell lines for gold-standard validation. Please check that this product meets your needs before purchasing.</p> <p>If you have any questions, special requirements or concerns, please send us an inquiry and/or contact our Support team ahead of purchase. Recommended alternatives for this product can be found below, along with publications, customer reviews and Q&As</p>

製品の特性

製品の状態	Liquid
保存方法	Shipped at 4°C. Store at +4°C short term (1-2 weeks). Upon delivery aliquot. Store at -20°C or -80°C. Avoid freeze / thaw cycle.
バッファー	pH: 7.40 Preservative: 0.09% Sodium azide Constituent: PBS
精製度	Protein G purified
特記事項 (精製)	Purified IgG prepared by affinity chromatography.
ポリ/モノ	モノクローナル

クローン名	SN6
ミエローマ	P3-NS1/1-Ag4-1
アイソタイプ	IgG1

アプリケーション

The Abpromise guarantee Abpromise保証は、 次のテスト済みアプリケーションにおけるab11414の使用に適用されます
アプリケーションノートには、推奨の開始希釈率がありますが、適切な希釈率につきましてはご検討ください。

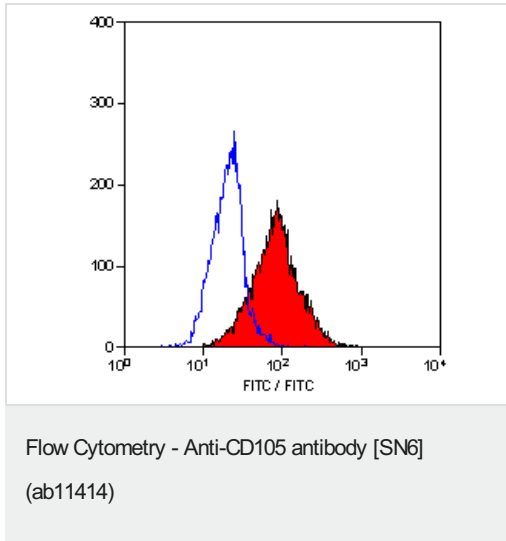
アプリケーション	Abreviews	特記事項
Flow Cyt		Use at an assay dependent concentration. Use 10ul of the neat dilution to label 106 cells in 100ul. ab170190 - Mouse monoclonal IgG1 is suitable for use as an

追加情報 Is unsuitable for WB.

ターゲット情報

機能	Major glycoprotein of vascular endothelium. May play a critical role in the binding of endothelial cells to integrins and/or other RGD receptors.
組織特異性	Endoglin is restricted to endothelial cells in all tissues except bone marrow.
関連疾患	Defects in ENG are the cause of hereditary hemorrhagic telangiectasia type 1 (HHT1) [MIM:187300, 108010]; also known as Osler-Rendu-Weber syndrome 1 (ORW1). HHT1 is an autosomal dominant multisystemic vascular dysplasia, characterized by recurrent epistaxis, muco-cutaneous telangiectases, gastro-intestinal hemorrhage, and pulmonary (PAVM), cerebral (CAVM) and hepatic arteriovenous malformations; all secondary manifestations of the underlying vascular dysplasia. Although the first symptom of HHT1 in children is generally nose bleed, there is an important clinical heterogeneity.
細胞内局在	Membrane.

画像



ab11414 staining CD105 in human KG1 cells by Flow Cytometry analysis.

Please note: All products are "FOR RESEARCH USE ONLY. NOT FOR USE IN DIAGNOSTIC PROCEDURES"

Our Abpromise to you: Quality guaranteed and expert technical support

- Replacement or refund for products not performing as stated on the datasheet
- Valid for 12 months from date of delivery
- Response to your inquiry within 24 hours
- We provide support in Chinese, English, French, German, Japanese and Spanish
- Extensive multi-media technical resources to help you
- We investigate all quality concerns to ensure our products perform to the highest standards

If the product does not perform as described on this datasheet, we will offer a refund or replacement. For full details of the Abpromise, please visit <https://www.abcam.co.jp/abpromise> or contact our technical team.

Terms and conditions

- Guarantee only valid for products bought direct from Abcam or one of our authorized distributors