

### Anti-CCRL2 antibody ab88632

★★★★★ **5 Abreviews**   **4 References**   画像数 4

#### 製品の概要

製品名	Anti-CCRL2 antibody
製品の詳細	Mouse polyclonal to CCRL2
由来種	Mouse
アプリケーション	<b>適用あり:</b> WB, Flow Cyt
種交差性	<b>交差種:</b> Mouse, Human
免疫原	Recombinant full length protein within Human CCRL2. The exact immunogen sequence used to generate this antibody is proprietary information. If additional detail on the immunogen is needed to determine the suitability of the antibody for your needs, please <b>contact</b> our Scientific Support team to discuss your requirements. Database link: <b><u>NP_003956</u></b>
ポジティブ・コントロール	RAW 264.7 cell lyate, NIH/3T3 cell lysate, transfected 293 cells
特記事項	<p>The Life Science industry has been in the grips of a reproducibility crisis for a number of years. Abcam is leading the way in addressing this with our range of recombinant monoclonal antibodies and knockout edited cell lines for gold-standard validation. Please check that this product meets your needs before purchasing.</p> <p>If you have any questions, special requirements or concerns, please send us an inquiry and/or contact our Support team ahead of purchase. Recommended alternatives for this product can be found below, along with publications, customer reviews and Q&amp;As</p>

#### 製品の特性

製品の状態	Liquid
保存方法	Shipped at 4°C. Upon delivery aliquot and store at -20°C or -80°C. Avoid repeated freeze / thaw cycles.
バッファー	pH: 7.40 Constituent: 100% PBS
精製度	Protein A purified
ポリ/モノ	ポリクローナル
アイソタイプ	IgG

## アプリケーション

### The Abpromise guarantee

**Abpromise保証は、**次のテスト済みアプリケーションにおけるab88632の使用に適用されます

アプリケーションノートには、推奨の開始希釈率がありますが、適切な希釈率につきましてはご検討ください。

アプリケーション	Abreviews	特記事項
WB		Use a concentration of 1 µg/ml. Predicted molecular weight: 40 kDa.
Flow Cyt	★★★★★ (5)	Use at an assay dependent concentration. <b>ab37355</b> - Mouse polyclonal IgG, is suitable for use as an isotype control with this antibody.

## ターゲット情報

### 機能

Receptor for CCL19 and chemerin/RARRES2. Does not appear to be a signaling receptor, but may have a role in modulating chemokine-triggered immune responses by capturing and internalizing CCL19 or by presenting RARRES2 ligand to CMKLR1, a functional signaling receptors. Plays a critical role for the development of Th2 responses.

### 組織特異性

Expressed abundantly in immunal tissues such as spleen, fetal liver, lymph node and bone marrow. Strong expression also in lung and heart. Expressed in almost all hematopoietic cells including monocytes, macrophages, PMNs, T-cells (both CD4+ and CD8+), monocyte-derived iDCs, NK cells, and CD34+ progenitor cells. B cells expressed isoform 1 but not isoform 2. Up-regulated on synovial neutrophils of rheumatoid arthritis patients.

### 配列類似性

Belongs to the G-protein coupled receptor 1 family.

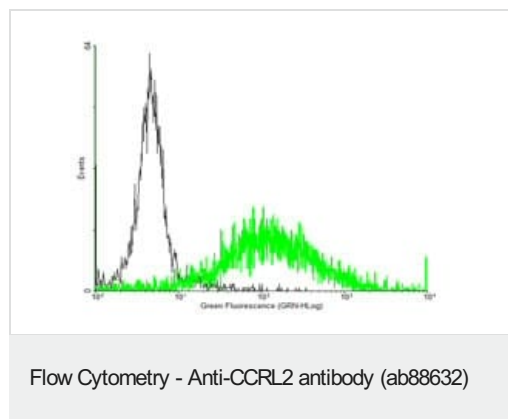
### ドメイン

Lacks the conserved DRYLAIV motif in the second intracellular loop that is required for signaling of functional chemokine receptors.

### 細胞内局在

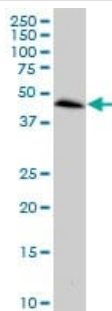
Cell membrane.

## 画像



FACS analysis of negative control 293 cells (black) and CCRL2-expressing 293 cells (green) using ab88632.

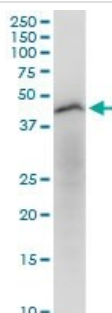
Flow Cytometry - Anti-CCRL2 antibody (ab88632)



Western blot - Anti-CCRL2 antibody (ab88632)

Anti-CCRL2 antibody (ab88632) at 1 µg/ml + Raw 264.7 cell lysate at 50 µg

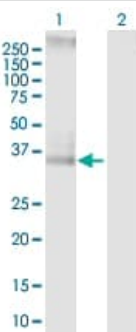
**Predicted band size:** 40 kDa



Western blot - Anti-CCRL2 antibody (ab88632)

Anti-CCRL2 antibody (ab88632) at 1 µg/ml + NIH/3T3 cell lysate at 50 µg

**Predicted band size:** 40 kDa



Western blot - Anti-CCRL2 antibody (ab88632)

**All lanes :** Anti-CCRL2 antibody (ab88632) at 1 µg/ml

**Lane 1 :** CCRL2-transfected 293T cell lysate

**Lane 2 :** Non-transfected 293T cell lysate

Lysates/proteins at 25 µg per lane.

**Predicted band size:** 40 kDa

**Observed band size:** 38 kDa

**Please note:** All products are "FOR RESEARCH USE ONLY. NOT FOR USE IN DIAGNOSTIC PROCEDURES"

### Our Abpromise to you: Quality guaranteed and expert technical support

- Replacement or refund for products not performing as stated on the datasheet
- Valid for 12 months from date of delivery
- Response to your inquiry within 24 hours
- We provide support in Chinese, English, French, German, Japanese and Spanish
- Extensive multi-media technical resources to help you

- We investigate all quality concerns to ensure our products perform to the highest standards

If the product does not perform as described on this datasheet, we will offer a refund or replacement. For full details of the Abpromise, please visit <https://www.abcam.co.jp/abpromise> or contact our technical team.

### **Terms and conditions**

---

- Guarantee only valid for products bought direct from Abcam or one of our authorized distributors