

### Anti-CCR4 antibody [KH-4F5] ab59550

★★★★★ [1 Abreviews](#) [1 References](#) [画像数 2](#)

#### 製品の概要

製品名	Anti-CCR4 antibody [KH-4F5]
製品の詳細	Mouse monoclonal [KH-4F5] to CCR4
由来種	Mouse
アプリケーション	<b>適用あり:</b> Flow Cyt, ICC/IF
種交差性	<b>交差種:</b> Recombinant fragment
免疫原	Synthetic peptide from human CCR4
特記事項	<p>The Life Science industry has been in the grips of a reproducibility crisis for a number of years. Abcam is leading the way in addressing this with our range of recombinant monoclonal antibodies and knockout edited cell lines for gold-standard validation. Please check that this product meets your needs before purchasing.</p> <p>If you have any questions, special requirements or concerns, please send us an inquiry and/or contact our Support team ahead of purchase. Recommended alternatives for this product can be found below, along with publications, customer reviews and Q&amp;As</p>

#### 製品の特性

製品の状態	Liquid
保存方法	Shipped at 4°C. Store at +4°C short term (1-2 weeks). Upon delivery aliquot. Store at -20°C long term.
バッファー	pH: 7.20 Constituent: PBS
精製度	Protein G purified
ポリ/モノ	モノクローナル
クローン名	KH-4F5
アイソタイプ	IgG2a

#### アプリケーション

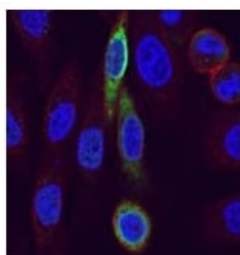
**The Abpromise guarantee** Abpromise保証は、次のテスト済みアプリケーションにおけるab59550の使用に適用されます  
アプリケーションノートには、推奨の開始希釈率がありますが、適切な希釈率につきましてはご検討ください。

アプリケーション	Abreviews	特記事項
Flow Cyt		Use 1.2µg for 10 <sup>6</sup> cells. <b>ab170191</b> - Mouse monoclonal IgG2a, is suitable for use as an isotype control with this antibody.
ICC/IF		Use 1µg for 10 <sup>6</sup> cells.

## ターゲット情報

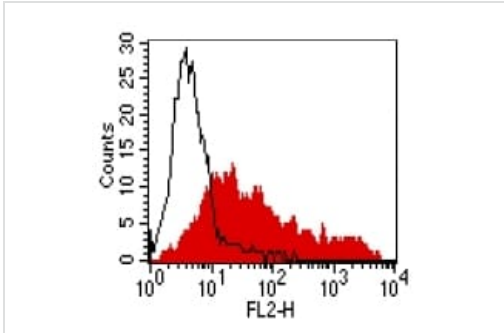
機能	High affinity receptor for the C-C type chemokines CCL17/TARC and CCL22/MDC. The activity of this receptor is mediated by G(i) proteins which activate a phosphatidylinositol-calcium second messenger system. Can function as a chemoattractant homing receptor on circulating memory lymphocytes and as a coreceptor for some primary HIV-2 isolates. In the CNS, could mediate hippocampal-neuron survival.
組織特異性	Predominantly expressed in the thymus, in peripheral blood leukocytes, including T-cells, mostly CD4+ cells, and basophils, and in platelets; at lower levels, in the spleen and in monocytes. Detected also in macrophages, IL-2-activated natural killer cells and skin-homing memory T-cells, mostly the ones expressing the cutaneous lymphocyte antigen (CLA). Expressed in brain microvascular and coronary artery endothelial cells.
配列類似性	Belongs to the G-protein coupled receptor 1 family.
翻訳後修飾	In natural killer cells, CCL22 binding induces phosphorylation on yet undefined Ser/Thr residues, most probably by beta-adrenergic receptor kinases 1 and 2.
細胞内局在	Cell membrane.

## 画像



Spectral Confocal Microscopy of CHO cells using ab59550 at 1 µg/10<sup>6</sup> cells . CHO cells were transiently transfected with an expression vector encoding CCR4. Binding of ab59550 was visualized with a FITC-conjugated secondary antibody (green). Actin filaments are labeled with Alexa Fluor-555 Phalloidin (red). Cell nuclei are stained with DAPI (blue).

Immunocytochemistry/ Immunofluorescence - Anti-CCR4 antibody [KH-4F5] (ab59550)



Flow Cytometry - Anti-CCR4 antibody [KH-4F5]  
(ab59550)

FACS analysis of BOSC23 cells using ab59550 at  $1.2 \mu\text{g}/10^6$  cells. BOSC23 cells were transiently transfected with an expression vector encoding either CCR4 (red curve) or an irrelevant protein (control transfectant). Binding of ab59550 was detected with a PE conjugated secondary antibody.

**Please note:** All products are "FOR RESEARCH USE ONLY. NOT FOR USE IN DIAGNOSTIC PROCEDURES"

### Our Abpromise to you: Quality guaranteed and expert technical support

- Replacement or refund for products not performing as stated on the datasheet
- Valid for 12 months from date of delivery
- Response to your inquiry within 24 hours
- We provide support in Chinese, English, French, German, Japanese and Spanish
- Extensive multi-media technical resources to help you
- We investigate all quality concerns to ensure our products perform to the highest standards

If the product does not perform as described on this datasheet, we will offer a refund or replacement. For full details of the Abpromise, please visit <https://www.abcam.co.jp/abpromise> or contact our technical team.

### Terms and conditions

- Guarantee only valid for products bought direct from Abcam or one of our authorized distributors