

### Anti-CCR4 antibody ab47553

画像数 1

#### 製品の概要

製品名	Anti-CCR4 antibody
製品の詳細	Rabbit polyclonal to CCR4
由来種	Rabbit
アプリケーション	<b>適用あり:</b> WB
種交差性	<b>交差種:</b> Mouse
免疫原	Synthetic peptide conjugated to KLH derived from within residues 1 - 100 of Mouse CCR4.Immunogen の所有権に関して(Peptide available as <a href="#">ab47642</a> .)
ポジティブ・コントロール	This antibody gave a positive signal in the following Mouse lysates: Thymus Tissue, Spleen Tissue and RAW 264.7 Whole Cell.
特記事項	<p>The Life Science industry has been in the grips of a reproducibility crisis for a number of years. Abcam is leading the way in addressing this with our range of recombinant monoclonal antibodies and knockout edited cell lines for gold-standard validation. Please check that this product meets your needs before purchasing.</p> <p>If you have any questions, special requirements or concerns, please send us an inquiry and/or contact our Support team ahead of purchase. Recommended alternatives for this product can be found below, along with publications, customer reviews and Q&amp;As</p>

#### 製品の特性

製品の状態	Liquid
保存方法	Shipped at 4°C. Store at +4°C short term (1-2 weeks). Upon delivery aliquot. Store at -20°C or -80°C. Avoid freeze / thaw cycle.
バッファー	<p>pH: 7.40</p> <p>Preservative: 0.02% Sodium azide</p> <p>Constituent: PBS</p> <p>Batches of this product that have a concentration &lt; 1mg/ml may have BSA added as a stabilising agent. If you would like information about the formulation of a specific lot, please contact our scientific support team who will be happy to help.</p>
精製度	Immunogen affinity purified
ポリ/モノ	ポリクローナル

## アプリケーション

## The Abpromise guarantee

**Abpromise保証は、次のテスト済みアプリケーションにおけるab47553の使用に適用されます**

アプリケーションノートには、推奨の開始希釈率がありますが、適切な希釈率につきましてはご検討ください。

アプリケーション	Abreviews	特記事項
WB		Use a concentration of 1 µg/ml. Detects a band of approximately 55 kDa (predicted molecular weight: 41 kDa).

## ターゲット情報

## 機能

High affinity receptor for the C-C type chemokines CCL17/TARC and CCL22/MDC. The activity of this receptor is mediated by G(i) proteins which activate a phosphatidylinositol-calcium second messenger system. Can function as a chemoattractant homing receptor on circulating memory lymphocytes and as a coreceptor for some primary HIV-2 isolates. In the CNS, could mediate hippocampal-neuron survival.

## 組織特異性

Predominantly expressed in the thymus, in peripheral blood leukocytes, including T-cells, mostly CD4+ cells, and basophils, and in platelets; at lower levels, in the spleen and in monocytes. Detected also in macrophages, IL-2-activated natural killer cells and skin-homing memory T-cells, mostly the ones expressing the cutaneous lymphocyte antigen (CLA). Expressed in brain microvascular and coronary artery endothelial cells.

## 配列類似性

Belongs to the G-protein coupled receptor 1 family.

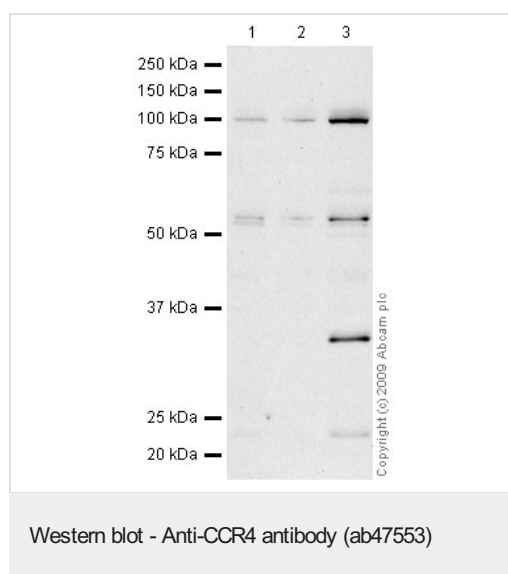
## 翻訳後修飾

In natural killer cells, CCL22 binding induces phosphorylation on yet undefined Ser/Thr residues, most probably by beta-adrenergic receptor kinases 1 and 2.

## 細胞内局在

Cell membrane.

## 画像



**All lanes :** Anti-CCR4 antibody (ab47553) at 1 µg/ml

**Lane 1 :** Thymus (Mouse) Tissue Lysate

**Lane 2 :** Spleen (Mouse) Tissue Lysate

**Lane 3 :** RAW 264.7 (Mouse leukaemic monocyte macrophage cell line) Whole Cell Lysate

Lysates/proteins at 10 µg per lane.

## Secondary

**All lanes :** Goat polyclonal to Rabbit IgG - H&L - Pre-Adsorbed (HRP) at 1/3000 dilution

Developed using the ECL technique.

Performed under reducing conditions.

**Predicted band size:** 41 kDa

**Observed band size:** 55 kDa

**Additional bands at:** 100 kDa, 32 kDa. We are unsure as to the identity of these extra bands.

CCR4 contains a number of potential glycosylation sites so it is thought that this is the reason it runs at 55kDa.

**Please note:** All products are "FOR RESEARCH USE ONLY. NOT FOR USE IN DIAGNOSTIC PROCEDURES"

#### **Our Abpromise to you: Quality guaranteed and expert technical support**

---

- Replacement or refund for products not performing as stated on the datasheet
- Valid for 12 months from date of delivery
- Response to your inquiry within 24 hours
- We provide support in Chinese, English, French, German, Japanese and Spanish
- Extensive multi-media technical resources to help you
- We investigate all quality concerns to ensure our products perform to the highest standards

If the product does not perform as described on this datasheet, we will offer a refund or replacement. For full details of the Abpromise, please visit <https://www.abcam.co.jp/abpromise> or contact our technical team.

#### **Terms and conditions**

---

- Guarantee only valid for products bought direct from Abcam or one of our authorized distributors