

Anti-CCR3 antibody ab36827

★★★★☆ [2 Abreviews](#) [4 References](#) [画像数 3](#)

製品の概要

製品名	Anti-CCR3 antibody
製品の詳細	Rabbit polyclonal to CCR3
由来種	Rabbit
アプリケーション	適用あり: WB, IHC-P, ICC/IF
種交差性	交差種: Human
免疫原	ab36827 was raised against a 14 amino acid peptide from near the carboxy terminus of CCR3 (Human).
ポジティブ・コントロール	IHC-P: Human spleen tissue. ICC/IF: Human spleen cells WB: Human spleen cell lysate.
特記事項	<p>The Life Science industry has been in the grips of a reproducibility crisis for a number of years. Abcam is leading the way in addressing this with our range of recombinant monoclonal antibodies and knockout edited cell lines for gold-standard validation. Please check that this product meets your needs before purchasing.</p> <p>If you have any questions, special requirements or concerns, please send us an inquiry and/or contact our Support team ahead of purchase. Recommended alternatives for this product can be found below, along with publications, customer reviews and Q&As</p>

製品の特性

製品の状態	Liquid
保存方法	Shipped at 4°C. Store at +4°C short term (1-2 weeks). Store at +4°C.
バッファー	pH: 7.2 Preservative: 0.02% Sodium azide Constituent: PBS
精製度	Ion Exchange Chromatography
ポリ/モノ	ポリクローナル
アイソタイプ	IgG

アプリケーション

The Abpromise guarantee

Abpromise保証は、次のテスト済みアプリケーションにおけるab36827の使用に適用されます

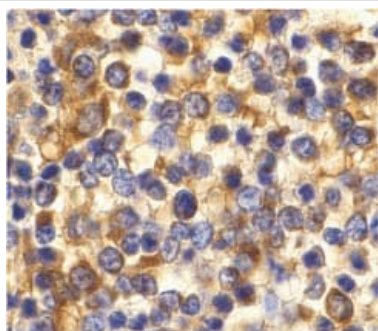
アプリケーションノートには、推奨の開始希釈率がありますが、適切な希釈率につきましてはご確認ください。

アプリケーション	Abreviews	特記事項
WB		Use a concentration of 1 - 2 µg/ml. Detects a band of approximately 55 kDa (predicted molecular weight: 43 kDa).
IHC-P	★★★★★ (2)	Use a concentration of 10 µg/ml.
ICC/IF		Use a concentration of 20 µg/ml.

ターゲット情報

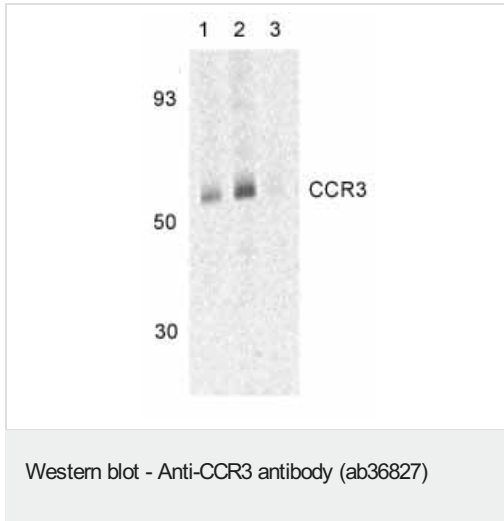
機能	Receptor for a C-C type chemokine. Binds to eotaxin, eotaxin-3, MCP-3, MCP-4, RANTES and MIP-1 delta. Subsequently transduces a signal by increasing the intracellular calcium ions level. Alternative coreceptor with CD4 for HIV-1 infection.
組織特異性	In eosinophils as well as trace amounts in neutrophils and monocytes.
配列類似性	Belongs to the G-protein coupled receptor 1 family.
細胞内局在	Cell membrane.

画像



ab36827 at 10µg/ml staining CCR3 in human spleen tissue by IHC

Immunohistochemistry (Formalin/PFA-fixed paraffin-embedded sections) - Anti-CCR3 antibody (ab36827)



Lane 1 : Anti-CCR3 antibody (ab36827) at 1 µg/ml

Lanes 2-3 : Anti-CCR3 antibody (ab36827) at 2 µg/ml

Lanes 1-2 : Human spleen tissue lysates

Lane 3 : Human spleen tissue lysates with Blocking peptide

Predicted band size: 43 kDa

Observed band size: 55 kDa

Immunocytochemistry/ Immunofluorescence - Anti-CCR3 antibody (ab36827)

Immunofluorescence of CCR3 in Human Spleen cells using ab36827 at 20 µg/ml.

Please note: All products are "FOR RESEARCH USE ONLY. NOT FOR USE IN DIAGNOSTIC PROCEDURES"

Our Abpromise to you: Quality guaranteed and expert technical support

- Replacement or refund for products not performing as stated on the datasheet
- Valid for 12 months from date of delivery
- Response to your inquiry within 24 hours
- We provide support in Chinese, English, French, German, Japanese and Spanish
- Extensive multi-media technical resources to help you
- We investigate all quality concerns to ensure our products perform to the highest standards

If the product does not perform as described on this datasheet, we will offer a refund or replacement. For full details of the Abpromise, please visit <https://www.abcam.co.jp/abpromise> or contact our technical team.

Terms and conditions

- Guarantee only valid for products bought direct from Abcam or one of our authorized distributors