



### Anti-CCR3 antibody ab25789

画像数 1

#### 製品の概要

製品名	Anti-CCR3 antibody
製品の詳細	Goat polyclonal to CCR3
由来種	Goat
特異性	This antibody recognizes mouse CCR3 and the peptide sequence is < 50 % identical to other chemokine receptors in this region.
アプリケーション	<b>適用あり:</b> IHC-P
種交差性	<b>交差種:</b> Mouse
免疫原	Synthetic peptide: TDEIKTVVESFETTPYEYEWAPPC , corresponding to N terminal amino acids 5-29 of Mouse CCR3  <b>Run BLAST with</b>  <b>Run BLAST with</b>
ポジティブ・コントロール	Human spleen sections or cytosmeears/cytospins of human peripheral blood leukocytes. A549 cell line also has been shown to express CCR3 receptor.
特記事項	<p>The Life Science industry has been in the grips of a reproducibility crisis for a number of years. Abcam is leading the way in addressing this with our range of recombinant monoclonal antibodies and knockout edited cell lines for gold-standard validation. Please check that this product meets your needs before purchasing.</p> <p>If you have any questions, special requirements or concerns, please send us an inquiry and/or contact our Support team ahead of purchase. Recommended alternatives for this product can be found below, along with publications, customer reviews and Q&amp;As</p>

#### 製品の特性

製品の状態	Liquid
保存方法	Shipped at 4°C. Upon delivery aliquot and store at -20°C or -80°C. Avoid repeated freeze / thaw cycles.
バッファー	pH: 7.20 Preservative: 0.1% Sodium azide Constituents: 0.21% Potassium phosphate, 0.812% Sodium chloride, 0.1% BSA
精製度	Protein G purified
ポリ/モノ	ポリクローナル

## アプリケーション

## The Abpromise guarantee

**Abpromise保証は、**次のテスト済みアプリケーションにおけるab25789の使用に適用されます

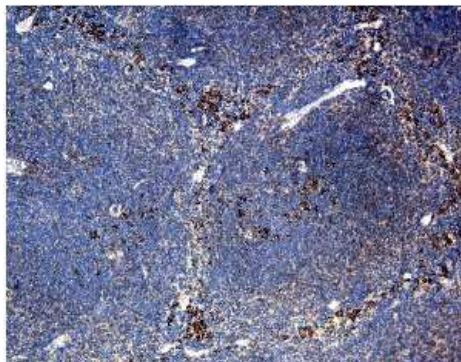
アプリケーションノートには、推奨の開始希釈率がありますが、適切な希釈率につきましてはご検討ください。

アプリケーション	Abreviews	特記事項
IHC-P		Use at an assay dependent concentration.

## ターゲット情報

機能	Receptor for a C-C type chemokine. Binds to eotaxin, eotaxin-3, MCP-3, MCP-4, RANTES and MIP-1 delta. Subsequently transduces a signal by increasing the intracellular calcium ions level. Alternative coreceptor with CD4 for HIV-1 infection.
組織特異性	In eosinophils as well as trace amounts in neutrophils and monocytes.
配列類似性	Belongs to the G-protein coupled receptor 1 family.
細胞内局在	Cell membrane.

## 画像



Immunohistochemistry of CCR3 (ab25789) antibody to mouse CCR3 on paraffin section of mouse spleen.

Immunohistochemistry (Formalin/PFA-fixed paraffin-embedded sections) - Anti-CCR3 antibody (ab25789)

**Please note:** All products are "FOR RESEARCH USE ONLY. NOT FOR USE IN DIAGNOSTIC PROCEDURES"

## Our Abpromise to you: Quality guaranteed and expert technical support

- Replacement or refund for products not performing as stated on the datasheet
- Valid for 12 months from date of delivery
- Response to your inquiry within 24 hours

- We provide support in Chinese, English, French, German, Japanese and Spanish
- Extensive multi-media technical resources to help you
- We investigate all quality concerns to ensure our products perform to the highest standards

If the product does not perform as described on this datasheet, we will offer a refund or replacement. For full details of the Abpromise, please visit <https://www.abcam.co.jp/abpromise> or contact our technical team.

#### **Terms and conditions**

---

- Guarantee only valid for products bought direct from Abcam or one of our authorized distributors