

### Anti-CCL4/MIP-1 beta + CCL4L1 antibody [EPR494] ab40857

リコンビナント **RabMAb**

画像数 5

#### 製品の概要

製品名	Anti-CCL4/MIP-1 beta + CCL4L1 antibody [EPR494]
製品の詳細	Rabbit monoclonal [EPR494] to CCL4/MIP-1 beta + CCL4L1
由来種	Rabbit
アプリケーション	<b>適用あり:</b> IP, ICC/IF, WB <b>適用なし:</b> IHC
種交差性	<b>交差種:</b> Human
免疫原	Synthetic peptide within Human CCL4/MIP-1 beta aa 50 to the C-terminus (C terminal). The exact sequence is proprietary. Database link: <b><u>P13236</u></b>
ポジティブ・コントロール	THP-1 cell lysate
特記事項	This product is a recombinant monoclonal antibody, which offers several advantages including: <ul style="list-style-type: none"> <li>- High batch-to-batch consistency and reproducibility</li> <li>- Improved sensitivity and specificity</li> <li>- Long-term security of supply</li> <li>- Animal-free production</li> </ul> For more information <b><u>see here</u></b> .  Our RabMAb <sup>®</sup> technology is a patented hybridoma-based technology for making rabbit monoclonal antibodies. For details on our patents, please refer to <b><u>RabMAb<sup>®</sup> patents</u></b> .

#### 製品の特性

製品の状態	Liquid
保存方法	Shipped at 4°C. Store at +4°C short term (1-2 weeks). Upon delivery aliquot. Store at -20°C long term. Avoid freeze / thaw cycle.
バッファー	pH: 7.20 Preservative: 0.01% Sodium azide Constituents: 40% Glycerol (glycerin, glycerine), 0.05% BSA, PBS
精製度	Protein A purified
ポリ/モノ	モノクローナル
クローン名	EPR494

アイソタイプIgG

アプリケーション

**The Abpromise guarantee**      **Abpromise保証は、**次のテスト済みアプリケーションにおけるab40857の使用に適用されます  
アプリケーションノートには、推奨の開始希釈率がありますが、適切な希釈率につきましてはご検討ください。

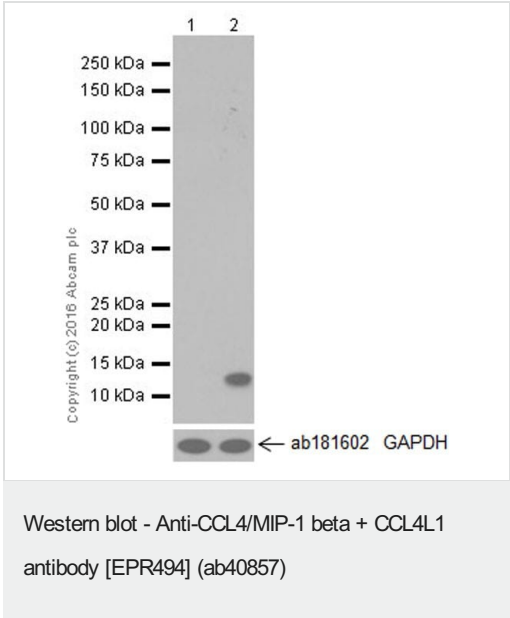
アプリケーション	Abreviews	特記事項
IP		1/50.
ICC/IF		1/100.
WB		1/1000 - 1/500000. Detects a band of approximately 12 kDa (predicted molecular weight: 10 kDa).

追加情報Is unsuitable for IHC.

ターゲット情報

細胞内局在CCL4/MIP-1 beta: Secreted. CCL4L1: Secreted.

画像



**All lanes :** Anti-CCL4/MIP-1 beta + CCL4L1 antibody [EPR494] (ab40857) at 1/1000 dilution

**Lane 1 :** Untreated THP-1 (human acute monocytic leukemia) lysate

**Lane 2 :** THP-1 (human acute monocytic leukemia) treated with 100 nM Phorbol-12-myristate-13-acetate(PMA) overnight, then treated with Lipopolysaccharides (LPS) 100 ng/mL for 7 hours and then 1 µg/mL Brefeldin A was added for the last 3 hours, lysate

Lysates/proteins at 10 µg per lane.

Secondary

**All lanes :** Goat Anti-Rabbit IgG H&L (HRP) (**ab97051**) at 1/100000 dilution

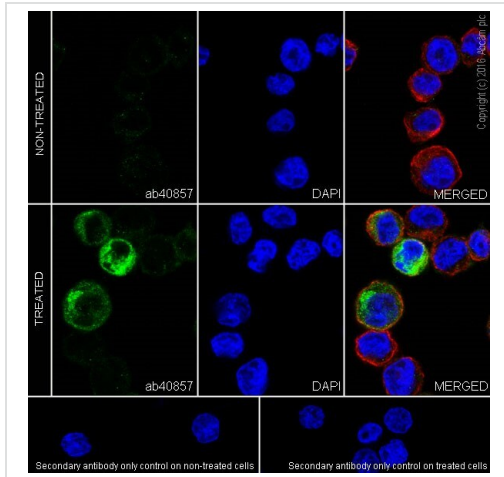
**Predicted band size:** 10 kDa

**Observed band size:** 12 kDa

**Exposure time:** 15 seconds

Blocking/Diluting buffer 5% NFDM /TBST.

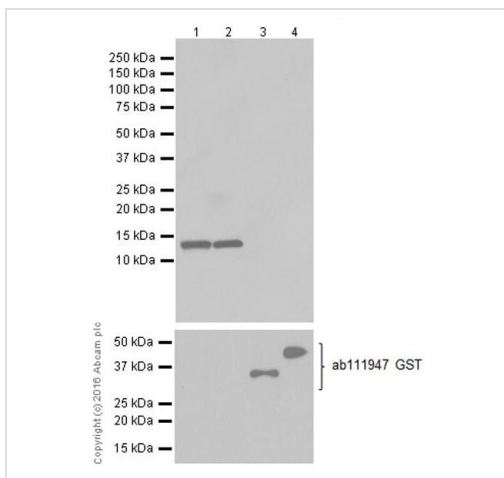
CCL4/MIP-1 beta (CCL4) is induced in macrophages following exposure to bacterial LPS (PMID: 9848081).



Immunocytochemistry/ Immunofluorescence - Anti-CCL4/MIP-1 beta + CCL4L1 antibody [EPR494] (ab40857)

Immunocytochemistry/Immunofluorescence analysis of THP-1 (Human monocytic leukemia cell line) labeling CCL4/MIP-1 beta/CCL4 + CCL4L with ab40857 at 1/100. Cells were fixed with 4% Paraformaldehyde and permeabilized with 0.1% Triton X-100. **ab150077**, Alexa Fluor® 488-conjugated goat anti-rabbit IgG (1/1000) was used as the secondary antibody. Cells were counterstained with **ab195889**, Anti-alpha Tubulin antibody [DM1A] - Microtubule Marker (Alexa Fluor® 594) at 1/200. Nuclei were counterstained with DAPI (blue).

The expression increased after treatment with Lipopolysaccharides (LPS), 100 ng/mL for 4 hours, followed by addition of Brefeldin A (1 µg/mL) for 3 hours.



Western blot - Anti-CCL4/MIP-1 beta + CCL4L1 antibody [EPR494] (ab40857)

**All lanes** : Anti-CCL4/MIP-1 beta + CCL4L1 antibody [EPR494] (ab40857) at 1/10000 dilution

**Lane 1** : Untagged human CCL4 recombinant protein (aa24-92)

**Lane 2** : Untagged human CCL4L recombinant protein (aa24-92)

**Lane 3** : GST-tagged human CCL3 recombinant protein (aa27-92)

**Lane 4** : GST-tagged human CCL3L recombinant protein 2\*(aa28-93)

Lysates/proteins at 10 µg per lane.

## Secondary

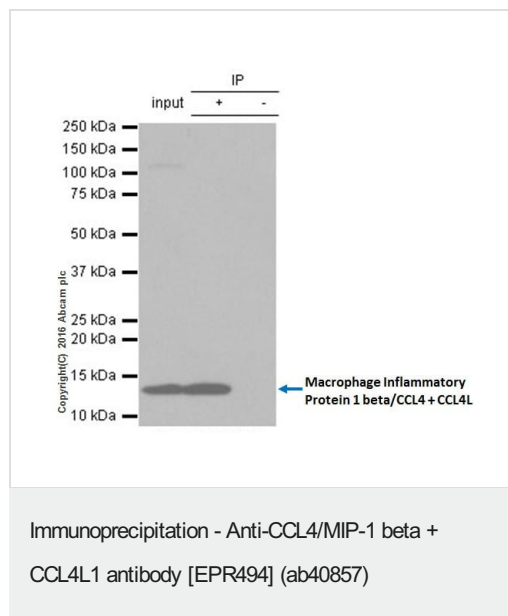
**All lanes** : Goat Anti-Rabbit IgG H&L (HRP) (**ab97051**) at 1/100000 dilution

**Predicted band size:** 10 kDa

**Observed band size:** 12 kDa

**Exposure time:** 3 seconds

Blocking/Diluting buffer 5% NFDM /TBST



ab40857 at 1/50 immunoprecipitating CCL4/MIP-1 beta/CCL4 + CCL4L in THP-1 (Human monocytic leukemia cell line) whole cell lysate observed at 12 KDa (lanes 1 and 2).

Lane 1 (input): THP-1 treated with 100 nM PMA overnight, then treated with 100 ng/mL LPS for 7 hours and 1 µg/mL Brefeldin A was added for the last 3 hours whole cell lysate, 10µg

Lane 2 (+): ab40857 + THP-1 treated with 100 nM PMA overnight, then treated with 100 ng/mL LPS for 7 hours and 1µg/mL Brefeldin A was added for the last 3 hours whole cell lysate

Lane 3 (-): Rabbit monoclonal IgG (**ab172730**) instead of ab40857 in THP-1 treated with 100 nM PMA overnight, then treated with 100 ng/mL LPS for 7 hours and 1 µg/mL Brefeldin A was added for the last 3 hours whole cell lysate

For western blotting: ab40857 at 1/1000 followed by **ab131366** VeriBlot for IP Detection Reagent (HRP) for detection at 1/000.

Blocking buffer and concentration: 5% NFDM/TBST.

Diluting buffer and concentration: 5% NFDM /TBST.

Why choose a recombinant antibody?

**Research with confidence**  
Consistent and reproducible results

**Long-term and scalable supply**  
Recombinant technology

**Success from the first experiment**  
Confirmed specificity

**Ethical standards compliant**  
Animal-free production

Anti-CCL4/MIP-1 beta + CCL4L1 antibody [EPR494] (ab40857)

**Please note:** All products are "FOR RESEARCH USE ONLY. NOT FOR USE IN DIAGNOSTIC PROCEDURES"

### Our Abpromise to you: Quality guaranteed and expert technical support

- Replacement or refund for products not performing as stated on the datasheet
- Valid for 12 months from date of delivery
- Response to your inquiry within 24 hours

- We provide support in Chinese, English, French, German, Japanese and Spanish
- Extensive multi-media technical resources to help you
- We investigate all quality concerns to ensure our products perform to the highest standards

If the product does not perform as described on this datasheet, we will offer a refund or replacement. For full details of the Abpromise, please visit <https://www.abcam.co.jp/abpromise> or contact our technical team.

#### **Terms and conditions**

---

- Guarantee only valid for products bought direct from Abcam or one of our authorized distributors