

### Anti-CCL21 antibody [MM0146-2H26] ab89396

画像数 2

#### 製品の概要

製品名	Anti-CCL21 antibody [MM0146-2H26]
製品の詳細	Mouse monoclonal [MM0146-2H26] to CCL21
由来種	Mouse
アプリケーション	<b>適用あり:</b> WB, IHC-P
種交差性	<b>交差種:</b> Human
免疫原	Recombinant full length protein corresponding to Human CCL21. Database link: <a href="#">O00585</a>
ポジティブ・コントロール	WB: Human placenta tissue lysate. IHC-P: Human placenta tissue.
特記事項	<p>Reconstituted antibody should be aliquoted and can be stored frozen at &lt; -20 for at least six months without detectable loss of activity. Avoid repeated freeze-thaw cycles.</p> <p>The Life Science industry has been in the grips of a reproducibility crisis for a number of years. Abcam is leading the way in addressing this with our range of recombinant monoclonal antibodies and knockout edited cell lines for gold-standard validation. Please check that this product meets your needs before purchasing.</p> <p>If you have any questions, special requirements or concerns, please send us an inquiry and/or contact our Support team ahead of purchase. Recommended alternatives for this product can be found below, along with publications, customer reviews and Q&amp;As</p>

#### 製品の特性

製品の状態	Lyophilized:Reconstitute the antibody with 200 µl sterile PBS to give a final concentration of 0.5 mg/ml.
保存方法	Shipped at 4°C. Store at -80°C.
バッファー	Constituent: PBS
精製度	Protein G purified
特記事項 (精製)	The IgG fraction of culture supernatant was purified by Protein G affinity chromatography and filtered through a 0.2 µm filter.
ポリクローナル	モノクローナル
クローン名	MM0146-2H26
アイソタイプ	IgG1

## アプリケーション

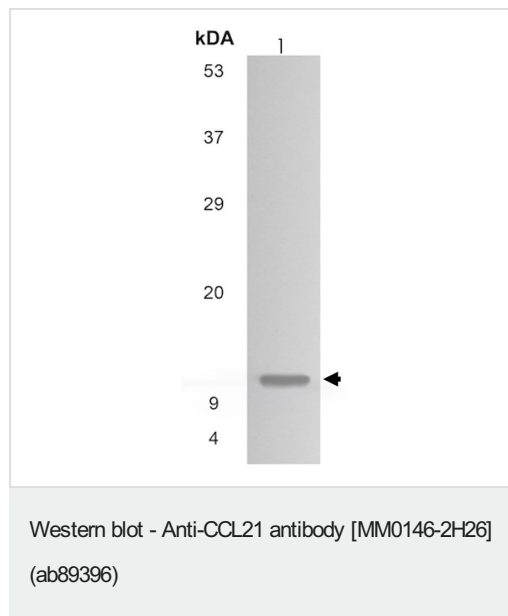
The Abpromise guarantee **Abpromise保証は、次のテスト済みアプリケーションにおけるab89396の使用に適用されます**  
アプリケーションノートには、推奨の開始希釈率がありますが、適切な希釈率につきましてはご検討ください。

アプリケーション	Abreviews	特記事項
WB		1/500 - 1/1000. Predicted molecular weight: 15 kDa.
IHC-P		Use at an assay dependent concentration.

## ターゲット情報

機能	Inhibits hemopoiesis and stimulates chemotaxis. Chemotactic in vitro for thymocytes and activated T-cells, but not for B-cells, macrophages, or neutrophils. Shows preferential activity towards naive T-cells. May play a role in mediating homing of lymphocytes to secondary lymphoid organs.
組織特異性	Highly expressed in high endothelial venules of lymph nodes, spleen and appendix. Intermediate levels found in small intestine, thyroid gland and trachea. Low level expression in thymus, bone marrow, liver, and pancreas. Also found in tonsil, fetal heart and fetal spleen.
配列類似性	Belongs to the intercrine beta (chemokine CC) family.
細胞内局在	Secreted.

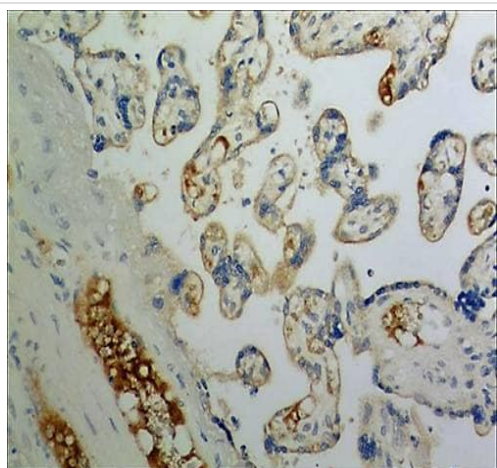
## 画像



Anti-CCL21 antibody [MM0146-2H26] (ab89396) at 1/500 dilution  
+ Human placenta tissue lysate

**Predicted band size:** 15 kDa

**Observed band size:** 12 kDa



Immunohistochemistry (Formalin/PFA-fixed paraffin-embedded sections) - Anti-CCL21 antibody  
[MM0146-2H26] (ab89396)

Immunohistochemistry (Formalin/PFA-fixed paraffin-embedded sections) analysis of human placental tissue section (4µm) labelling CCL21 with ab89396. Tissue was treated with 15µg/ml Proteinase K for antigen retrieval and fixed with 4% PFA. A HRP-conjugated anti-mouse IgG was used as the secondary antibody (30 minutes at room temperature) followed by DAB color development.

**Please note:** All products are "FOR RESEARCH USE ONLY. NOT FOR USE IN DIAGNOSTIC PROCEDURES"

### **Our Abpromise to you: Quality guaranteed and expert technical support**

---

- Replacement or refund for products not performing as stated on the datasheet
- Valid for 12 months from date of delivery
- Response to your inquiry within 24 hours
- We provide support in Chinese, English, French, German, Japanese and Spanish
- Extensive multi-media technical resources to help you
- We investigate all quality concerns to ensure our products perform to the highest standards

If the product does not perform as described on this datasheet, we will offer a refund or replacement. For full details of the Abpromise, please visit <https://www.abcam.co.jp/abpromise> or contact our technical team.

### **Terms and conditions**

---

- Guarantee only valid for products bought direct from Abcam or one of our authorized distributors