

### Anti-CCDC98 antibody [EPR6310(2)] ab139191

リコンビナント **RabMAb**

**7 References**   **画像数 5**

#### 製品の概要

製品名	Anti-CCDC98 antibody [EPR6310(2)]
製品の詳細	Rabbit monoclonal [EPR6310(2)] to CCDC98
由来種	Rabbit
アプリケーション	<b>適用あり:</b> Flow Cyt (Intra), WB, ICC/IF, IP <b>適用なし:</b> IHC-P
種交差性	<b>交差種:</b> Human
免疫原	Synthetic peptide within Human CCDC98 aa 350-450 (C terminal). The exact sequence is proprietary. Database link: <a href="#">Q6UWZ7</a>
ポジティブ・コントロール	WB: HeLa, MCF7, 293T and Jurkat whole cell lysate ( <a href="#">ab7899</a> ); ICC: HeLa cells. IP: HeLa. Flow Cyt: HeLa.
特記事項	<p>This product is a recombinant monoclonal antibody, which offers several advantages including:</p> <ul style="list-style-type: none"> <li>- High batch-to-batch consistency and reproducibility</li> <li>- Improved sensitivity and specificity</li> <li>- Long-term security of supply</li> <li>- Animal-free production</li> </ul> <p>For more information <a href="#">see here</a>.</p> <p>Our RabMAb<sup>®</sup> technology is a patented hybridoma-based technology for making rabbit monoclonal antibodies. For details on our patents, please refer to <a href="#">RabMAb<sup>®</sup> patents</a>.</p> <p>Mouse, Rat: We have preliminary internal testing data to indicate this antibody may not react with these species. Please contact us for more information.</p>

#### 製品の特性

製品の状態	Liquid
保存方法	Shipped at 4°C. Store at -20°C.
バッファー	pH: 7.2 Preservative: 0.01% Sodium azide Constituents: 9% PBS, 40% Glycerol (glycerin, glycerine), 0.05% BSA, 50% Tissue culture supernatant

精製度	Tissue culture supernatant
ポリ/モノ	モノクローナル
クローン名	EPR6310(2)
アイソタイプ	IgG

アプリケーション

The Abpromise guarantee      **Abpromise保証は、**次のテスト済みアプリケーションにおけるab139191の使用に適用されます  
 アプリケーションノートには、推奨の開始希釈率がありますが、適切な希釈率につきましてはご検討ください。

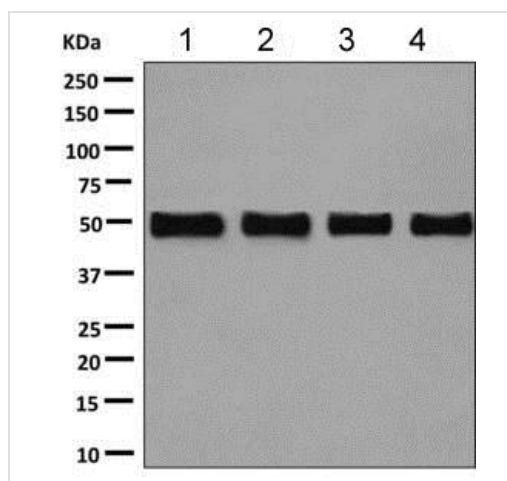
アプリケーション	Abreviews	特記事項
Flow Cyt (Intra)		1/100 - 1/1000. <b>ab172730</b> - Rabbit monoclonal IgG, is suitable for use as an isotype control with this antibody.
WB		1/1000 - 1/10000. Predicted molecular weight: 47 kDa.
ICC/IF		1/100 - 1/250.
IP		1/10 - 1/100.

追加情報      Is unsuitable for IHC-P.

ターゲット情報

機能	Component of the BRCA1-A complex, a complex that specifically recognizes 'Lys-63'-linked ubiquitinated histones H2A and H2AX at DNA lesions sites, leading to target the BRCA1-BARD1 heterodimer to sites of DNA damage at double-strand breaks (DSBs). The BRCA1-A complex also possesses deubiquitinase activity that specifically removes 'Lys-63'-linked ubiquitin on histones H2A and H2AX. In the BRCA1-A complex, it acts as a central scaffold protein that assembles the various components of the BRCA1-A complex and mediates the recruitment of BRCA1.
配列類似性	Belongs to the FAM175 family. Abraxas subfamily.
ドメイン	The MPN-like region is similar to the MPN (JAB/Mov34) domain. Its presence reveals similarities between the structure of the 19S proteasome and the BRCA1-A complexes.
翻訳後修飾	Phosphorylation of Ser-406 of the pSXXF motif by ATM or ATR constitutes a specific recognition motif for the BRCT domain of BRCA1. Phosphorylated upon DNA damage, probably by ATM or ATR.
細胞内局在	Nucleus. Localizes at sites of DNA damage at double-strand breaks.

画像



Western blot - Anti-CCDC98 antibody [EPR6310(2)] (ab139191)

**All lanes :** Anti-CCDC98 antibody [EPR6310(2)] (ab139191) at 1/1000 dilution

**Lane 1 :** HeLa cell lysate

**Lane 2 :** MCF7 cell lysate

**Lane 3 :** 293T (Human embryonic kidney epithelial cell) cell lysate

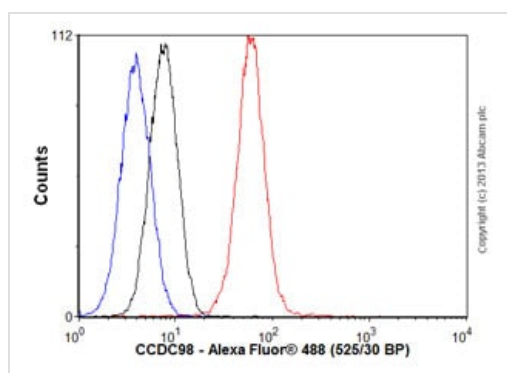
**Lane 4 :** Jurkat cell lysate

Lysates/proteins at 10 µg per lane.

### Secondary

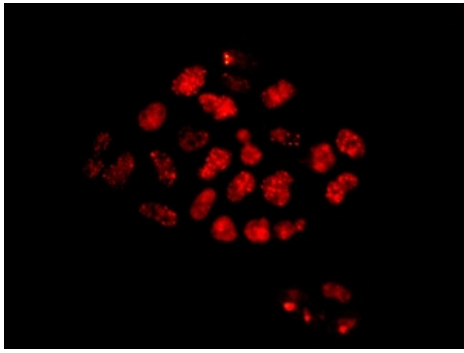
**All lanes :** Goat anti-rabbit HRP at 1/2000 dilution

**Predicted band size:** 47 kDa



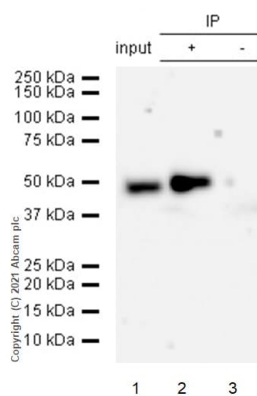
Flow Cytometry (Intracellular) - Anti-CCDC98 antibody [EPR6310(2)] (ab139191)

Overlay histogram showing HeLa cells stained with ab139191 (red line). The cells were fixed with 80% methanol (5 min) and then permeabilized with 0.1% PBS-Tween for 20 min. The cells were then incubated in 1x PBS / 10% normal goat serum / 0.3M glycine to block non-specific protein-protein interactions followed by the antibody (ab139191, 1/1000 dilution) for 30 min at 22°C. The secondary antibody used was Alexa Fluor® 488 goat anti-rabbit IgG (H&L) ([ab150077](#)) at 1/2000 dilution for 30 min at 22°C. Isotype control antibody (black line) was rabbit IgG (monoclonal) (0.1µg/1x10<sup>6</sup> cells) used under the same conditions. Unlabelled sample (blue line) was also used as a control. Acquisition of >5,000 events were collected using a 20mW Argon ion laser (488nm) and 525/30 bandpass filter.



Immunocytochemistry/ Immunofluorescence - Anti-CCDC98 antibody [EPR6310(2)] (ab139191)

Immunofluorescent analysis of HeLa cells labelling CCDC98 with ab139191 at 1/100 dilution.



Immunoprecipitation - Anti-CCDC98 antibody [EPR6310(2)] (ab139191)

CCDC98 was immunoprecipitated from 0.35 mg HeLa (Human cervix adenocarcinoma epithelial cell) whole cell lysate 10 µg with 139191 at 1/60 dilution (2µg). VeriBlot for IP Detection Reagent (HRP)([ab131366](#)) was used at 1/5000 dilution.

Lane 1: HeLa (Human cervix adenocarcinoma epithelial cell) whole cell lysate 10 µg

Lane 2: ab139191 IP in HeLa whole cell lysate

Lane 3: Rabbit monoclonal IgG ([ab172730](#)) instead of ab139191 in HeLa whole cell lysate

Blocking and dilution buffer and concentration: 5% NFDm/TBST.

### Why choose a recombinant antibody?



**Research with confidence**  
Consistent and reproducible results



**Long-term and scalable supply**  
Recombinant technology



**Success from the first experiment**  
Confirmed specificity



**Ethical standards compliant**  
Animal-free production

Anti-CCDC98 antibody [EPR6310(2)] (ab139191)

**Please note:** All products are "FOR RESEARCH USE ONLY. NOT FOR USE IN DIAGNOSTIC PROCEDURES"

### **Our Abpromise to you: Quality guaranteed and expert technical support**

---

- Replacement or refund for products not performing as stated on the datasheet
- Valid for 12 months from date of delivery
- Response to your inquiry within 24 hours
  
- We provide support in Chinese, English, French, German, Japanese and Spanish
- Extensive multi-media technical resources to help you
- We investigate all quality concerns to ensure our products perform to the highest standards

If the product does not perform as described on this datasheet, we will offer a refund or replacement. For full details of the Abpromise, please visit <https://www.abcam.co.jp/abpromise> or contact our technical team.

### **Terms and conditions**

---

- Guarantee only valid for products bought direct from Abcam or one of our authorized distributors