


Anti-CCDC6 antibody ab85923

画像数 2

製品の概要

製品名	Anti-CCDC6 antibody
製品の詳細	Rabbit polyclonal to CCDC6
由来種	Rabbit
アプリケーション	適用あり: WB, IP
種交差性	<p>交差種: Human</p> <p>交差が予測される動物種: Mouse, Rat, Rabbit, Horse, Chicken, Guinea pig, Dog, Pig, Xenopus laevis, Chimpanzee, Zebrafish, Rhesus monkey, Orangutan, Xenopus tropicalis, Medaka fish</p> 
免疫原	Synthetic peptide corresponding to a region between residues 75 and 125 of Human CCDC6 (AAC60637.1).
ポジティブ・コントロール	HeLa whole cell lysate.
特記事項	<p>The Life Science industry has been in the grips of a reproducibility crisis for a number of years. Abcam is leading the way in addressing this with our range of recombinant monoclonal antibodies and knockout edited cell lines for gold-standard validation. Please check that this product meets your needs before purchasing.</p> <p>If you have any questions, special requirements or concerns, please send us an inquiry and/or contact our Support team ahead of purchase. Recommended alternatives for this product can be found below, along with publications, customer reviews and Q&As</p>

製品の特性

製品の状態	Liquid
保存方法	Shipped at 4°C. Upon delivery aliquot and store at -20°C. Avoid freeze / thaw cycles.
バッファー	<p>pH: 7</p> <p>Preservative: 0.09% Sodium azide</p> <p>Constituent: Tris citrate/phosphate</p>
精製度	Immunogen affinity purified
ポリ/モノ	ポリクローナル
アイソタイプ	IgG

アプリケーション

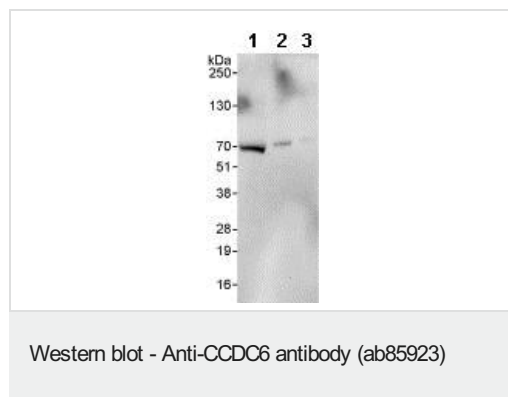
The Abpromise guarantee **Abpromise保証は、** 次のテスト済みアプリケーションにおけるab85923の使用に適用されます
アプリケーションノートには、推奨の開始希釈率がありますが、適切な希釈率につきましてはご検討ください。

アプリケーション	Abreviews	特記事項
WB		1/2000 - 1/10000. Predicted molecular weight: 66 kDa.
IP		Use at 2-5 µg/mg of lysate.

ターゲット情報

組織特異性	Ubiquitously expressed.
関連疾患	Defects in CCDC6 are a cause of thyroid papillary carcinoma (TPC) [MIM:188550]. TPC is a common tumor of the thyroid that typically arises as an irregular, solid or cystic mass from otherwise normal thyroid tissue. Papillary carcinomas are malignant neoplasm characterized by the formation of numerous, irregular, finger-like projections of fibrous stroma that is covered with a surface layer of neoplastic epithelial cells. Note=A chromosomal aberration involving CCDC6 is found in thyroid papillary carcinomas. Inversion inv(10)(q11.2;q21) generates the RET/CCDC6 (PTC1) oncogene.
ドメイン	The protein has mostly an alpha helical conformation similar to myosin heavy-chain tail that might adopt a coiled-coil conformation.
細胞内局在	Cytoplasm. Cytoplasm > cytoskeleton. May be a cytoskeletal protein.

画像



All lanes : Anti-CCDC6 antibody (ab85923) at 0.1 µg/ml

Lane 1 : HeLa whole cell lysate at 50 µg

Lane 2 : HeLa whole cell lysate at 15 µg

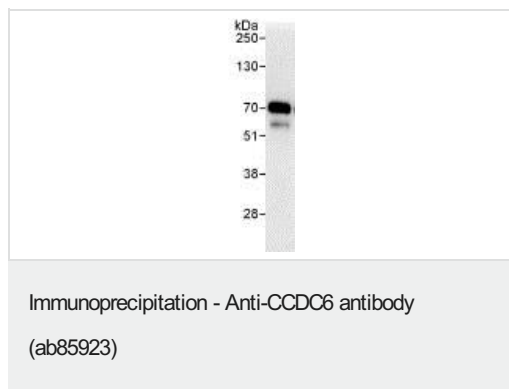
Lane 3 : HeLa whole cell lysate at 5 µg

Developed using the ECL technique.

Predicted band size: 66 kDa

Observed band size: 70 kDa

Exposure time: 30 seconds



Detection of Human CCDC6 in Immunoprecipitates of Whole cell lysate from HeLa cells (1 mg for IP, 20% of IP loaded) using ab85923 at 3 µg/mg lysate for IP and at 1 µg/ml for subsequent Western blot detection. Detection: Chemiluminescence with an exposure time of 10 seconds.

Please note: All products are "FOR RESEARCH USE ONLY. NOT FOR USE IN DIAGNOSTIC PROCEDURES"

Our Abpromise to you: Quality guaranteed and expert technical support

- Replacement or refund for products not performing as stated on the datasheet
- Valid for 12 months from date of delivery
- Response to your inquiry within 24 hours
- We provide support in Chinese, English, French, German, Japanese and Spanish
- Extensive multi-media technical resources to help you
- We investigate all quality concerns to ensure our products perform to the highest standards

If the product does not perform as described on this datasheet, we will offer a refund or replacement. For full details of the Abpromise, please visit <https://www.abcam.co.jp/abpromise> or contact our technical team.

Terms and conditions

- Guarantee only valid for products bought direct from Abcam or one of our authorized distributors