


Anti-Cbx8 antibody ab70796

3 References [画像数 2](#)

製品の概要

製品名	Anti-Cbx8 antibody
製品の詳細	Rabbit polyclonal to Cbx8
由来種	Rabbit
アプリケーション	適用あり: WB, IP
種交差性	交差種: Human 交差が予測される動物種: Mouse, Rat, Rabbit, Horse, Guinea pig, Cow, Dog, Pig, Chimpanzee, Rhesus monkey, Gorilla, <i>Xenopus tropicalis</i> 
免疫原	Synthetic peptide corresponding to a region between residue 350 and the C-terminus (residue 389) of human Cbx8 (NP_065700.1).
ポジティブ・コントロール	HeLa and 293T whole cell lysates.
特記事項	<p>The Life Science industry has been in the grips of a reproducibility crisis for a number of years. Abcam is leading the way in addressing this with our range of recombinant monoclonal antibodies and knockout edited cell lines for gold-standard validation. Please check that this product meets your needs before purchasing.</p> <p>If you have any questions, special requirements or concerns, please send us an inquiry and/or contact our Support team ahead of purchase. Recommended alternatives for this product can be found below, along with publications, customer reviews and Q&As</p>

製品の特性

製品の状態	Liquid
保存方法	Shipped at 4°C. Upon delivery aliquot and store at -20°C. Avoid freeze / thaw cycles.
バッファー	pH: 7 Preservative: 0.09% Sodium azide Constituents: 1.815% Tris, 1.764% Sodium citrate, 0.021% PBS
精製度	Immunogen affinity purified
特記事項 (精製)	ab70796 was affinity purified using an epitope specific to Cbx8 immobilized on solid support.
ポリ/モノ	ポリクローナル
アイソタイプ	IgG

アプリケーション

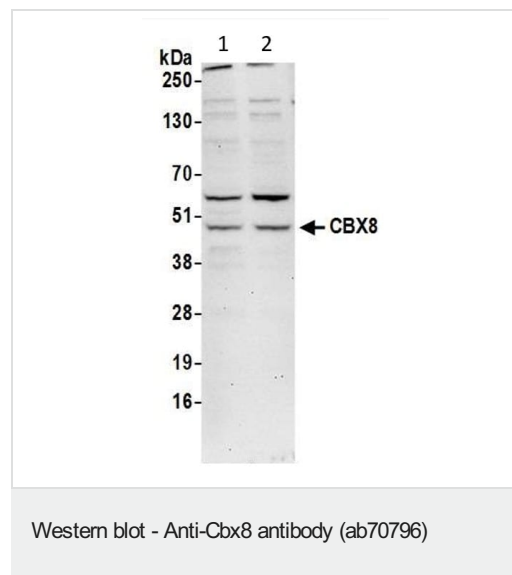
The Abpromise guarantee Abpromise保証は、 次のテスト済みアプリケーションにおけるab70796の使用に適用されます
アプリケーションノートには、推奨の開始希釈率がありますが、適切な希釈率につきましてはご検討ください。

アプリケーション	Abreviews	特記事項
WB		1/2000 - 1/10000. Detects a band of approximately 43 kDa (predicted molecular weight: 43 kDa).
IP		Use at 2-5 µg/mg of lysate.

ターゲット情報

機能	Component of the Polycomb group (PcG) multiprotein PRC1 complex, a complex required to maintain the transcriptionally repressive state of many genes, including Hox genes, throughout development. PcG PRC1 complex acts via chromatin remodeling and modification of histones; it mediates monoubiquitination of histone H2A 'Lys-119', rendering chromatin heritably changed in its expressibility.
配列類似性	Contains 1 chromo domain.
細胞内局在	Nucleus.

画像



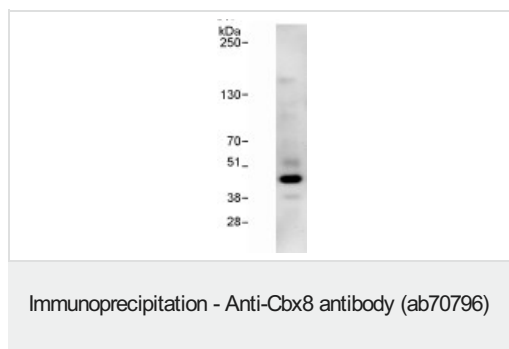
All lanes : Anti-Cbx8 antibody (ab70796) at 0.1 µg/ml

Lane 1 : HeLa whole cell lysate

Lane 2 : HEK293T whole cell lysate

Lysates/proteins at 50 µg per lane.

Predicted band size: 43 kDa



Detection of Cbx8 by Western Blot of Immunoprecipitate.
ab70796 at 1 µg/ml staining Cbx8 in HeLa whole cell lysate
immunoprecipitated using ab70796 at 3 µg/mg lysate (1 mg/IP; 20%
of IP loaded/lane).
Detection: Chemiluminescence with exposure time of 3 minutes.

Please note: All products are "FOR RESEARCH USE ONLY. NOT FOR USE IN DIAGNOSTIC PROCEDURES"

Our Abpromise to you: Quality guaranteed and expert technical support

- Replacement or refund for products not performing as stated on the datasheet
- Valid for 12 months from date of delivery
- Response to your inquiry within 24 hours
- We provide support in Chinese, English, French, German, Japanese and Spanish
- Extensive multi-media technical resources to help you
- We investigate all quality concerns to ensure our products perform to the highest standards

If the product does not perform as described on this datasheet, we will offer a refund or replacement. For full details of the Abpromise, please visit <https://www.abcam.co.jp/abpromise> or contact our technical team.

Terms and conditions

- Guarantee only valid for products bought direct from Abcam or one of our authorized distributors