


# Anti-cbx7 antibody ab91431

**1 References** [画像数 3](#)

### 製品の概要

---

製品名	Anti-cbx7 antibody
製品の詳細	Rabbit polyclonal to cbx7
由来種	Rabbit
アプリケーション	<b>適用あり:</b> IHC-P, WB, IP
種交差性	<b>交差種:</b> Human <b>交差が予測される動物種:</b> Rabbit, Horse, Cow, Chimpanzee, Rhesus monkey, Gorilla, Orangutan 

免疫原	Synthetic peptide within Human cbx7 aa 200-300. The exact immunogen sequence used to generate this antibody is proprietary information. If additional detail on the immunogen is needed to determine the suitability of the antibody for your needs, please <b>contact</b> our Scientific Support team to discuss your requirements. Database link: <a href="#">O95931</a>
-----	---

 [Run BLAST with](#)

 [Run BLAST with](#)

ポジティブ・コントロール	HeLa or 293T cell lysate
--------------	--------------------------

特記事項	<p>The Life Science industry has been in the grips of a reproducibility crisis for a number of years. Abcam is leading the way in addressing this with our range of recombinant monoclonal antibodies and knockout edited cell lines for gold-standard validation. Please check that this product meets your needs before purchasing.</p> <p>If you have any questions, special requirements or concerns, please send us an inquiry and/or contact our Support team ahead of purchase. Recommended alternatives for this product can be found below, along with publications, customer reviews and Q&amp;As</p>
------	---

### 製品の特性

---

製品の状態	Liquid
保存方法	Shipped at 4°C. Upon delivery aliquot and store at -20°C. Avoid freeze / thaw cycles.
バッファー	pH: 6.8 Preservative: 0.09% Sodium azide Constituents: Tris buffered saline, 0.1% BSA
精製度	Immunogen affinity purified
特記事項(精製)	Antibody was affinity purified using an epitope specific to cbx7 immobilized on solid support.

ポリ/モノ  
アイソタイプ

ポリクローナル  
IgG

#### アプリケーション

**The Abpromise guarantee** Abpromise保証は、次のテスト済みアプリケーションにおけるab91431の使用に適用されます  
アプリケーションノートには、推奨の開始希釈率がありますが、適切な希釈率につきましてはご検討ください。

アプリケーション	Abreviews	特記事項
IHC-P		1/100 - 1/500. Perform heat mediated antigen retrieval with citrate buffer pH 6 before commencing with IHC staining protocol.
WB		1/2000 - 1/10000. Predicted molecular weight: 28 kDa.
IP		Use at 5-15 µg/mg of lysate.

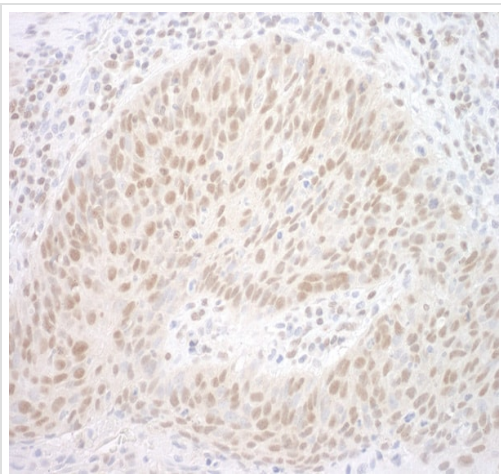
#### ターゲット情報

**関連性**

Control of cell proliferation by Polycomb group proteins (PcG) is an important facet of cellular homeostasis and its disruption can promote tumorigenesis. CBX7 is a novel PcG protein which is found to control the growth of normal cells. CBX7 is a gene that encodes a Polycomb protein, as shown by sequence homology, its interaction with Ring1 and its localization to nuclear Polycomb bodies. CBX7 extends the lifespan of a wide range of normal human cells and immortalizes mouse fibroblasts by downregulating expression of the Ink4a/Arf locus. CBX7 does not inter-function or colocalize with Bmi1, and both can exert their actions independently of each other as shown by reverse genetics. CBX7 was highly expressed in three different prostate cancer cell lines and present at elevated levels in normal prostate. (Gil et al., 2004).

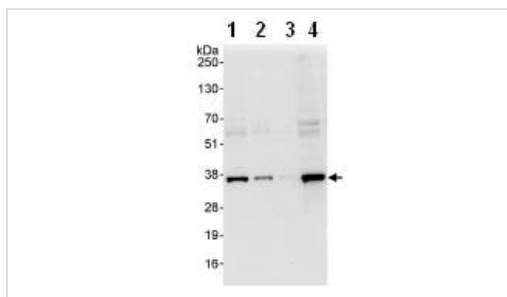
**細胞内局在** Nuclear

#### 画像



Immunohistochemistry (Formalin/PFA-fixed paraffin-embedded sections) - Anti-cbx7 antibody (ab91431)

Immunohistochemistry (Formalin/PFA-fixed paraffin-embedded sections) analysis of human lung carcinoma tissue labelling cbx7 with ab91431 at 1/200 (1 µg/ml). Detection: DAB.



Western blot - Anti-cbx7 antibody (ab91431)

**All lanes :** Anti-cbx7 antibody (ab91431) at 0.04 µg/ml

**Lane 1 :** HeLa whole cell lysate at 50 µg

**Lane 2 :** HeLa whole cell lysate at 15 µg

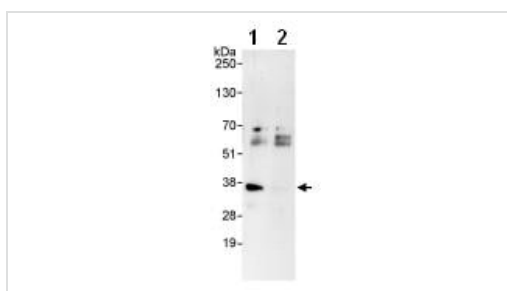
**Lane 3 :** HeLa whole cell lysate at 5 µg

**Lane 4 :** 293T whole cell lysate at 50 µg

Developed using the ECL technique.

**Predicted band size:** 28 kDa

**Exposure time:** 10 seconds



Immunoprecipitation - Anti-cbx7 antibody (ab91431)

cbx7 was immunoprecipitated from HeLa whole cell lysate, using ab91431 at 10 µg/mg of lysate. 20% of the immunoprecipitate was loaded per lane for the subsequent Western blot and probed with ab91431 at 1 µg/ml (lane 1) or a control IgG (lane 2).

Detection: chemoluminescence with exposure time of 30 seconds.

**Please note:** All products are "FOR RESEARCH USE ONLY. NOT FOR USE IN DIAGNOSTIC PROCEDURES"

**Our Promise to you: Quality guaranteed and expert technical support**

- Replacement or refund for products not performing as stated on the datasheet

- Valid for 12 months from date of delivery
- Response to your inquiry within 24 hours
  
- We provide support in Chinese, English, French, German, Japanese and Spanish
- Extensive multi-media technical resources to help you
- We investigate all quality concerns to ensure our products perform to the highest standards

If the product does not perform as described on this datasheet, we will offer a refund or replacement. For full details of the Abpromise, please visit <https://www.abcam.co.jp/abpromise> or contact our technical team.

### **Terms and conditions**

---

- Guarantee only valid for products bought direct from Abcam or one of our authorized distributors