

Anti-CBX4 antibody ab4189

1 [References](#) [画像数](#) **2**

製品の概要

製品名	Anti-CBX4 antibody
製品の詳細	Rabbit polyclonal to CBX4
由来種	Rabbit
特異性	In immunofluorescence, this antibody detects the expected discrete nuclear structure that is termed the PcG body, corresponding to the known localisation of PC2. The antibody has been successfully used to detect FLAG-tagged transfected hPC2 (see picture). It detects a weak band that probably corresponds to endogenous PC2, however, a strong secondary band is also seen at 50kD in all cell lines thus far tested. This suggests that the antibody also reacts with another ubiquitous highly expressed protein.
アプリケーション	適用あり: ICC/IF, WB
種交差性	交差種: Human
免疫原	Synthetic peptide: GLQDSSTDNRAKLC , corresponding to amino acids 95 - 107 of Human PC2.

 [Run BLAST with](#)

 [Run BLAST with](#)

特記事項

PC2 and other members of the Drosophila Polycomb group gene family are part of a cellular memory system that is responsible for the inheritance of gene activity by progeny cells.

The Life Science industry has been in the grips of a reproducibility crisis for a number of years. Abcam is leading the way in addressing this with our range of recombinant monoclonal antibodies and knockout edited cell lines for gold-standard validation. Please check that this product meets your needs before purchasing.

If you have any questions, special requirements or concerns, please send us an inquiry and/or contact our Support team ahead of purchase. Recommended alternatives for this product can be found below, along with publications, customer reviews and Q&As

製品の特性

製品の状態	Liquid
保存方法	Shipped at 4°C. Upon delivery aliquot and store at -20°C or -80°C. Avoid repeated freeze / thaw cycles.

バッファー	Preservative: 0.01% Sodium azide Constituents: 0.42% Potassium phosphate, 0.87% Sodium chloride
精製度	Immunogen affinity purified
特記事項 (精製)	This is an affinity purified antibody produced by immunoaffinity chromatography using the immunizing peptide after immobilization to a solid phase.
一次抗体 備考	PC2 and other members of the Drosophila Polycomb group gene family are part of a cellular memory system that is responsible for the inheritance of gene activity by progeny cells.
ポリ/モノ	ポリクローナル
アイソタイプ	IgG

アプリケーション

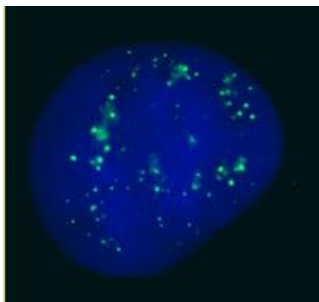
The Abpromise guarantee **Abpromise保証は、**次のテスト済みアプリケーションにおけるab4189の使用に適用されます
アプリケーションノートには、推奨の開始希釈率がありますが、適切な希釈率につきましてはご検討ください。

アプリケーション	Abreviews	特記事項
ICC/IF		Use at an assay dependent dilution.
WB		Use at an assay dependent dilution. Detects a band of approximately 82 kDa (predicted molecular weight: 61 kDa).

ターゲット情報

機能	E3 SUMO-protein ligase which facilitates SUMO1 conjugation by UBE2I. Component of the Polycomb group (PcG) multiprotein PRC1 complex, a complex required to maintain the transcriptionally repressive state of many genes, including Hox genes, throughout development. PcG PRC1 complex acts via chromatin remodeling and modification of histones; it mediates monoubiquitination of histone H2A 'Lys-119', rendering chromatin heritably changed in its expressibility.
組織特異性	Ubiquitous.
パスウェイ	Protein modification; protein sumoylation.
配列類似性	Contains 1 chromo domain.
翻訳後修飾	Phosphorylated on Thr-497 by HIPK2 upon DNA damage; which enhances E3 SUMO-protein ligase activity and promotes sumoylation on Lys-494.
細胞内局在	Nucleus.

画像

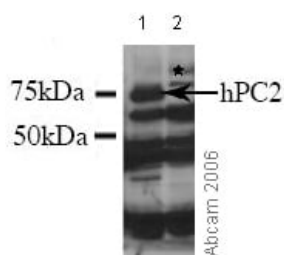


Immunocytochemistry/ Immunofluorescence - Anti-CBX4 antibody (ab4189)

This image is courtesy of Luke Hughes-Davies and Rhiannon Jade, Gurdon Institute, Cambridge, UK

Immunofluorescent imaging of human cells (U2OS) with ab4189 reveals the expected discrete nuclear structure that is termed the PcG body corresponding to the known localisation of PC2. This corresponds to results seen in Satijn et al.

IF was performed with a standard paraformaldehyde technique (fixed in PBS buffered PFH 4% for 5 minutes, permeabilised with 0.5% triton-PBS for 5 minutes, blocked with 5% milk / 0.2% tween for one hour. Primary antibody used at 1/200 in 5% milk / 0.2% TWEEN for one hour, secondary antibody for 30 minutes. All blocking and incubation steps carried out at 37 degrees C. Nuclei counterstained with Hoechst stain (blue).



Western blot - Anti-CBX4 antibody (ab4189)

This image is courtesy of Dr Ari Melnick, Albert Einstein College of Medicine

All lanes : Anti-CBX4 antibody (ab4189)

Lane 1 : HEK 293 lysate over-expressing DDDDK tagged hPC2

Lane 2 : HEK 293 lysate

Predicted band size: 61 kDa

Observed band size: 75 kDa

Additional bands at: 30 kDa (possible non-specific secondary antibody binding), 49 kDa (possible non-specific secondary antibody binding), 65 kDa (possible non-specific secondary antibody binding)

ab4189 specifically recognises over expressed DDDDK tagged hPC2 in HEK293 cells (lane1). The lower bands are assigned to degradation products.

Please note: All products are "FOR RESEARCH USE ONLY. NOT FOR USE IN DIAGNOSTIC PROCEDURES"

Our Abpromise to you: Quality guaranteed and expert technical support

- Replacement or refund for products not performing as stated on the datasheet
- Valid for 12 months from date of delivery
- Response to your inquiry within 24 hours
- We provide support in Chinese, English, French, German, Japanese and Spanish

- Extensive multi-media technical resources to help you
- We investigate all quality concerns to ensure our products perform to the highest standards

If the product does not perform as described on this datasheet, we will offer a refund or replacement. For full details of the Abpromise, please visit <https://www.abcam.co.jp/abpromise> or contact our technical team.

Terms and conditions

- Guarantee only valid for products bought direct from Abcam or one of our authorized distributors