

### Anti-CBX1 / HP1 beta antibody [MAC353] ab10811

KO 評価済

★★★★☆ [2 Abreviews](#) [13 References](#) [画像数 3](#)

#### 製品の概要

製品名	Anti-CBX1 / HP1 beta antibody [MAC353]
製品の詳細	Rat monoclonal [MAC353] to CBX1 / HP1 beta
由来種	Rat
特異性	Ab10811 recognises the M31 molecule in mouse and the homologous HP1 HS beta molecule in man.
アプリケーション	<b>適用あり:</b> WB, ICC/IF, IP, ELISA, IHC-Fr, ChIP
種交差性	<b>交差種:</b> Mouse, Human
免疫原	Fusion protein corresponding to Mouse CBX1/ HP1 beta (C terminal). Database link: <a href="#">P83917</a>
ポジティブ・コントロール	Murine and human nuclear extracts.
特記事項	<p>The Life Science industry has been in the grips of a reproducibility crisis for a number of years. Abcam is leading the way in addressing this with our range of recombinant monoclonal antibodies and knockout edited cell lines for gold-standard validation. Please check that this product meets your needs before purchasing.</p> <p>If you have any questions, special requirements or concerns, please send us an inquiry and/or contact our Support team ahead of purchase. Recommended alternatives for this product can be found below, along with publications, customer reviews and Q&amp;As</p>

#### 製品の特性

製品の状態	Liquid
保存方法	Shipped at 4°C. Store at +4°C short term (1-2 weeks). Upon delivery aliquot. Store at -20°C or -80°C. Avoid freeze / thaw cycle.
バッファー	Preservative: 0.09% Sodium azide Constituent: 5% BSA
精製度	Tissue culture supernatant
ポリ/モノ	モノクローナル
クローン名	MAC353
アイソタイプ	IgG2b

## アプリケーション

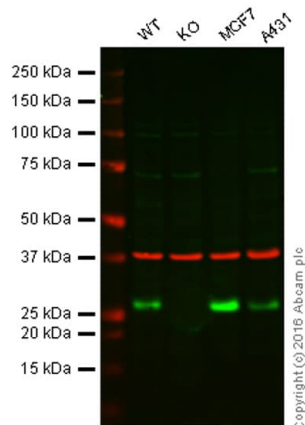
**The Abpromise guarantee**      **Abpromise保証は、次のテスト済みアプリケーションにおけるab10811の使用に適用されます**  
アプリケーションノートには、推奨の開始希釈率がありますが、適切な希釈率につきましてはご確認ください。

アプリケーション	Abreviews	特記事項
WB	★★★★★ (1)	Use at an assay dependent concentration. Detects a band of approximately 26 kDa (predicted molecular weight: 22.2 kDa).
ICC/IF	★★★★☆ (1)	Use at an assay dependent concentration.
IP		Use at an assay dependent concentration.
ELISA		Use at an assay dependent concentration.
IHC-Fr		Use at an assay dependent concentration.
ChIP		Use at an assay dependent concentration.

## ターゲット情報

機能	Component of heterochromatin. Recognizes and binds histone H3 tails methylated at 'Lys-9', leading to epigenetic repression. Interaction with lamin B receptor (LBR) can contribute to the association of the heterochromatin with the inner nuclear membrane.
組織特異性	Expressed in all adult and embryonic tissues.
配列類似性	Contains 2 chromo domains.
翻訳後修飾	Not phosphorylated. Ubiquitinated.
細胞内局在	Nucleus. Unassociated with chromosomes during mitosis.

## 画像



Western blot - Anti-CBX1 / HP1 beta antibody  
[MAC353] - ChIP Grade (ab10811)

**Lane 1:** Wild-type HAP1 cell lysate (40 µg)

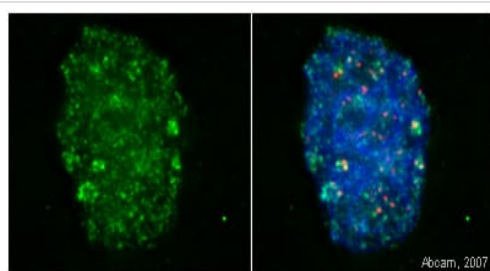
**Lane 2:** CBX1 knockout HAP1 cell lysate (40 µg)

**Lane 3:** MCF7 cell lysate (40 µg)

**Lane 4:** A431 cell lysate (40 µg)

**Lanes 1 - 4:** Merged signal (red and green). Green - ab10811 observed at 26 kDa. Red - loading control, **ab181602**, observed at 37 kDa.

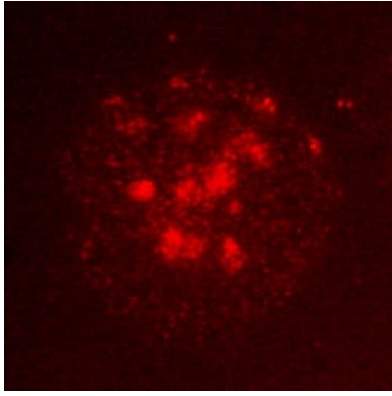
ab10811 was shown to specifically react with CBX1 / HP1 beta when CBX1 / HP1 beta knockout samples were used. Wild-type and CBX1 / HP1 beta knockout samples were subjected to SDS-PAGE. Ab10811 and **ab181602** (loading control to GAPDH) were diluted at 1/500 and 1/10000 dilution respectively and incubated overnight at 4°C. Blots were developed with Goat anti-Rat IgG H&L (IRDye® 800CW) (**ab253031**) preadsorbed and Goat Anti-Rabbit IgG H&L (IRDye® 680RD) preadsorbed (**ab216777**) secondary antibodies at 1/10000 dilution for 1 hour at room temperature before imaging.



Immunocytochemistry/ Immunofluorescence - Anti-CBX1 / HP1 beta antibody [MAC353] - ChIP Grade (ab10811)

This image is courtesy of Scott Slattery and Mke Mancini

HeLA cells were stained with ab10811 in panel one. In panel two they were stained with ab10811 (green), DAPI (blue) and SH-CREST (red), which stains the centromeres. Fix 30 minutes on ice in 4% formaldehyde in PEM. Quench autofluorescence 2 x 5 minutes with 1 mg/ml Na borohydride or 100 mM ammonium chloride in PEM. Permeabilize 30 minutes with 0.5% TX-100 in PEM. Block 30 minutes in 5% milk in TBST. Primary antibody incubated overnight at 4°C diluted 1/100 in 5% milk in TBST. Secondary antibody incubated 1 hour at RT diluted in 5% milk in TBST. Post-fix 20 minutes on ice in 4% formaldehyde in PEM. Quench autofluorescence 2 x 5 minutes with ammonium chloride in PEM. Counterstain with DAPI in TBST. Mount with ProLong Gold antifade reagent from Invitrogen. Notes: Ample washing between each step. TBST = Tris buffered saline + 0.1% Tween. PEM = 80 mM K-PIPES, pH 6.8, 5 mM EGTA, 2 mM MgCl<sub>2</sub>.



Immunofluorescence analysis of mouse erythroleukemia cell nuclei, staining CBX1 / HP1 beta in heterochromatin, with ab10811.

Cells were fixed with paraformaldehyde, permeabilized using Triton X-100 and blocked for 30 min with 2.5% BSA. Cells were incubated with primary antibody (1/50) before incubating with a Cy3-conjugated goat anti-rat IgG to detect staining.

Immunocytochemistry/ Immunofluorescence - Anti-CBX1 / HP1 beta antibody [MAC353] (ab10811)

Image from Talasz H et al., J Biol Chem. 2005 Nov 18;280(46):38814-22. Epub 2005 Sep 15. Fig 1.; doi: 10.1074/jbc.M505563200; November 18, 2005 The Journal of Biological Chemistry, 280, 38814-38822.

**Please note:** All products are "FOR RESEARCH USE ONLY. NOT FOR USE IN DIAGNOSTIC PROCEDURES"

### Our Abpromise to you: Quality guaranteed and expert technical support

- Replacement or refund for products not performing as stated on the datasheet
- Valid for 12 months from date of delivery
- Response to your inquiry within 24 hours
- We provide support in Chinese, English, French, German, Japanese and Spanish
- Extensive multi-media technical resources to help you
- We investigate all quality concerns to ensure our products perform to the highest standards

If the product does not perform as described on this datasheet, we will offer a refund or replacement. For full details of the Abpromise, please visit <https://www.abcam.co.jp/abpromise> or contact our technical team.

### Terms and conditions

- Guarantee only valid for products bought direct from Abcam or one of our authorized distributors