


### Anti-CBX1 / HP1 beta antibody ab10478

KO 評価済

★★★★★ [10 Abreviews](#) [29 References](#) [画像数 6](#)

#### 製品の概要

製品名	Anti-CBX1 / HP1 beta antibody
製品の詳細	Rabbit polyclonal to CBX1 / HP1 beta
由来種	Rabbit
特異性	ab10478 recognises a band at 25 kDa, which is attributed to CBX1 / HP1 beta.
アプリケーション	<b>適用あり:</b> WB, ICC/IF, IHC-P, IP
種交差性	<b>交差種:</b> Mouse, Rat, Human, Marsupial <b>交差が予測される動物種:</b> Chicken, Hamster, Drosophila melanogaster 
免疫原	Synthetic peptide. This information is proprietary to Abcam and/or its suppliers.
ポジティブ・コントロール	WB: HEK293T, HAP1, MCF7, A431, HeLa and PC12 cell lysates. IP: HeLa cell lysate.
特記事項	<p>The Life Science industry has been in the grips of a reproducibility crisis for a number of years. Abcam is leading the way in addressing this with our range of recombinant monoclonal antibodies and knockout edited cell lines for gold-standard validation. Please check that this product meets your needs before purchasing.</p> <p>If you have any questions, special requirements or concerns, please send us an inquiry and/or contact our Support team ahead of purchase. Recommended alternatives for this product can be found below, along with publications, customer reviews and Q&amp;As</p>

#### 製品の特性

製品の状態	Liquid
保存方法	Shipped at 4°C. Store at +4°C short term (1-2 weeks). Upon delivery aliquot. Store at -20°C or -80°C. Avoid freeze / thaw cycle.
バッファー	pH: 7.40 Preservative: 0.02% Sodium azide Constituent: PBS
	Batches of this product that have a concentration < 1mg/ml may have BSA added as a stabilising agent. If you would like information about the formulation of a specific lot, please contact our scientific support team who will be happy to help.

精製度	Immunogen affinity purified
ポリ/モノ	ポリクローナル
アイソタイプ	IgG

アプリケーション

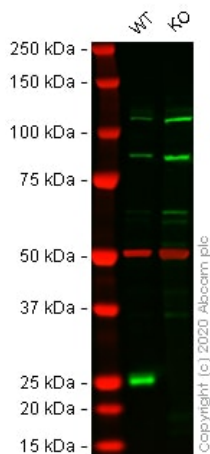
The Abpromise guarantee      **Abpromise保証は、**次のテスト済みアプリケーションにおけるab10478の使用に適用されます  
 アプリケーションノートには、推奨の開始希釈率がありますが、適切な希釈率につきましてはご検討ください。

アプリケーション	Abreviews	特記事項
WB	★★★★★ (5)	1/500 - 1/1000. Detects a band of approximately 25 kDa (predicted molecular weight: 21 kDa).
ICC/IF	★★★★★ (3)	Use at an assay dependent concentration.
IHC-P	★★★★★ (2)	Use at an assay dependent concentration.
IP		Use at an assay dependent concentration.

ターゲット情報

機能	Component of heterochromatin. Recognizes and binds histone H3 tails methylated at 'Lys-9', leading to epigenetic repression. Interaction with lamin B receptor (LBR) can contribute to the association of the heterochromatin with the inner nuclear membrane.
組織特異性	Expressed in all adult and embryonic tissues.
配列類似性	Contains 2 chromo domains.
翻訳後修飾	Not phosphorylated. Ubiquitinated.
細胞内局在	Nucleus. Unassociated with chromosomes during mitosis.

画像



Western blot - Anti-CBX1 / HP1 beta antibody  
(ab10478)

**All lanes :** Anti-CBX1 / HP1 beta antibody (ab10478) at 1/1000 dilution

**Lane 1 :** Wild-type HEK-293T cell lysate

**Lane 2 :** CBX1 knockout HEK-293T cell lysate

Lysates/proteins at 20 µg per lane.

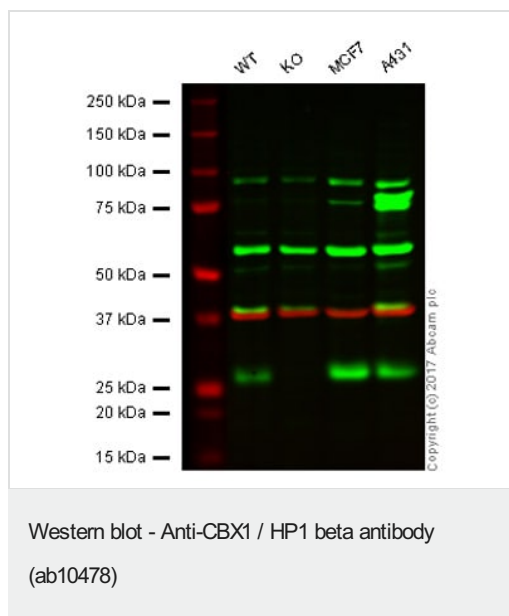
Performed under reducing conditions.

**Predicted band size:** 21 kDa

**Observed band size:** 26 kDa

**Lanes 1- 2:** Merged signal (red and green). Green - ab10478 observed at 26 kDa. Red - Anti-alpha Tubulin antibody [DM1A] - Loading Control ([ab7291](#)) observed at 50 kDa.

ab10478 was shown to react with CBX1 / HP1 beta in wild-type HEK-293T cells in western blot. Loss of signal was observed when knockout cell line [ab266356](#) (knockout cell lysate [ab257383](#)) was used. Wild-type HEK-293T and CBX1 knockout HEK-293T cell lysates were subjected to SDS-PAGE. Membrane was blocked for 1 hour at room temperature in 0.1% TBST with 3% non-fat dried milk. ab10478 and Anti-alpha Tubulin antibody [DM1A] - Loading Control ([ab7291](#)) overnight at 4°C at a 1 in 1000 dilution and a 1 in 20000 dilution respectively. Blots were developed with Goat anti-Rabbit IgG H&L (IRDye®800CW) preadsorbed ([ab216773](#)) and Goat anti-Mouse IgG H&L (IRDye®680RD) preadsorbed ([ab216776](#)) secondary antibodies at 1 in 20000 dilution for 1 hour at room temperature before imaging.



**Lane 1:** Wild type HAP1 whole cell lysate (20 µg)

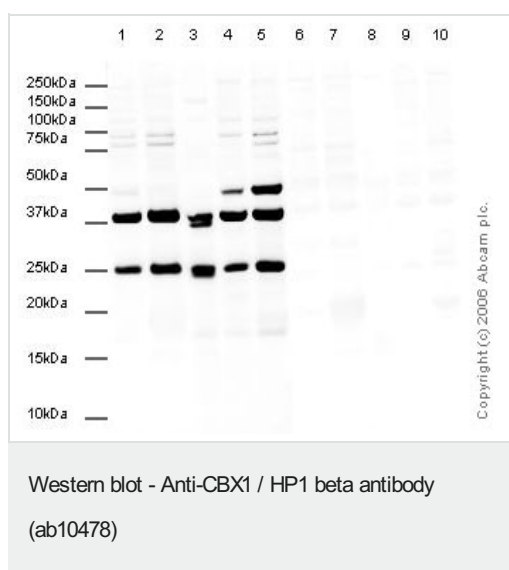
**Lane 2:** CBX1 knockout HAP1 whole cell lysate (20 µg)

**Lane 3:** MCF7 whole cell lysate (20 µg)

**Lane 4:** A431 whole cell lysate (20 µg)

**Lanes 1 - 4:** Merged signal (red and green). Green - ab10478 observed at 26 kDa. Red - loading control, **ab8245**, observed at 37 kDa.

ab10478 was shown to recognize CBX1 when CBX1 knockout samples were used, along with additional cross-reactive bands. Wild-type and CBX1 knockout samples were subjected to SDS-PAGE. Ab10478 and **ab8245** (Mouse anti GAPDH loading control) were incubated overnight at 4°C at 1000 dilution and 1/10000 dilution respectively. Blots were developed with Goat anti-Rabbit IgG H&L (IRDye® 800CW) preabsorbed **ab216773** and Goat anti-Mouse IgG H&L (IRDye® 680RD) preabsorbed **ab216776** secondary antibodies at 1/10000 dilution for 1 hour at room temperature before imaging.



**All lanes :** Anti-CBX1 / HP1 beta antibody (ab10478) at 1 µg/ml

**Lane 1 :** HeLa whole cell lysate

**Lane 2 :** HeLa nuclear lysate

**Lane 3 :** A431 cell lysate

**Lane 4 :** MCF7 cell lysate

**Lane 5 :** HEK293 cell lysate

**Lane 6 :** HeLa whole cell lysate with CBX1 / HP1 beta peptide (**ab30861**) at 1 µg/ml

**Lane 7 :** HeLa nuclear lysate with CBX1 / HP1 beta peptide (**ab30861**) at 1 µg/ml

**Lane 8 :** A431 lysate with CBX1 / HP1 beta peptide (**ab30861**) at 1 µg/ml

**Lane 9 :** MCF7 cell lysate with CBX1 / HP1 beta peptide (**ab30861**) at 1 µg/ml

**Lane 10 :** HEK293 cell lysate with CBX1 / HP1 beta peptide (**ab30861**) at 1 µg/ml

Lysates/proteins at 20 µg per lane.

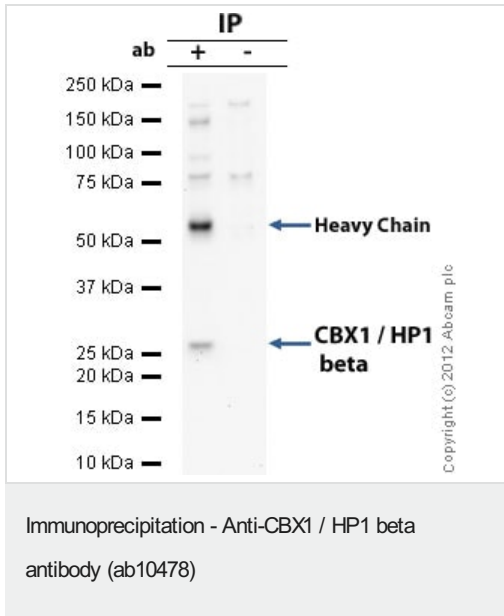
## Secondary

**All lanes :** Goat Anti-Rabbit IgG H&L (HRP) (**ab6721**) at 1/5000 dilution

**Predicted band size:** 21 kDa

**Observed band size:** 25 kDa

**Additional bands at:** 37 kDa (possible cross reactivity), 47 kDa (possible cross reactivity)



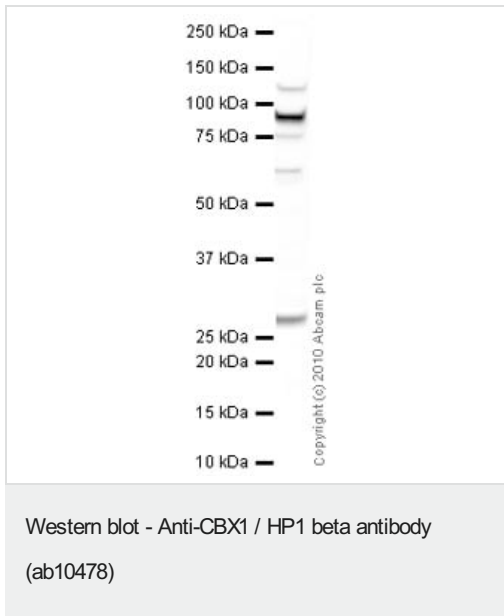
CBX1 / HP1 beta was immunoprecipitated using 0.5mg Hela whole cell extract, 5µg of Rabbit polyclonal to CBX1 / HP1 beta and 50µl of protein G magnetic beads (+). No antibody was added to the control (-).

The antibody was incubated under agitation with Protein G beads for 10min, Hela whole cell extract lysate diluted in RIPA buffer was added to each sample and incubated for a further 10min under agitation.

Proteins were eluted by addition of 40µl SDS loading buffer and incubated for 10min at 70°C; 10µl of each sample was separated on a SDS PAGE gel, transferred to a nitrocellulose membrane, blocked with 5% BSA and probed with ab10478.

Secondary: Clean blot (HRP conjugate) at 1/1000 dilution.

Band: 20ka: CBX1 / HP1 beta.



Anti-CBX1 / HP1 beta antibody (ab10478) at 1 µg/ml + PC12 (Rat adrenal pheochromocytoma cell line) Whole Cell Lysate at 10 µg

#### Secondary

Goat polyclonal to Rabbit IgG - H&L - Pre-Adsorbed (HRP) at 1/3000 dilution

Developed using the ECL technique.

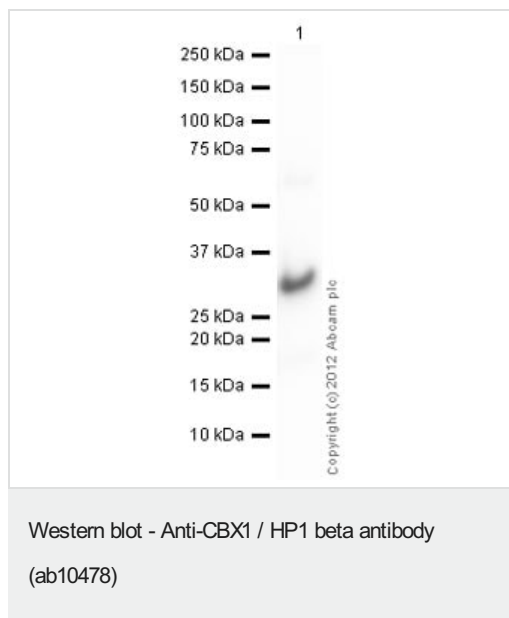
Performed under reducing conditions.

**Predicted band size:** 21 kDa

**Observed band size:** 27 kDa

**Additional bands at:** 90 kDa. We are unsure as to the identity of these extra bands.

**Exposure time:** 4 minutes



Anti-CBX1 / HP1 beta antibody (ab10478) at 1/500 dilution +  
Recombinant Human CBX1 / HP1 beta protein ([ab109847](#)) at 0.01  
µg

#### Secondary

Goat Anti-Rabbit IgG H&L (HRP) preadsorbed ([ab97080](#)) at  
1/5000 dilution

Developed using the ECL technique.

Performed under reducing conditions.

**Predicted band size:** 21 kDa

**Exposure time:** 10 seconds

**Please note:** All products are "FOR RESEARCH USE ONLY. NOT FOR USE IN DIAGNOSTIC PROCEDURES"

#### Our Abpromise to you: Quality guaranteed and expert technical support

- Replacement or refund for products not performing as stated on the datasheet
- Valid for 12 months from date of delivery
- Response to your inquiry within 24 hours
- We provide support in Chinese, English, French, German, Japanese and Spanish
- Extensive multi-media technical resources to help you
- We investigate all quality concerns to ensure our products perform to the highest standards

If the product does not perform as described on this datasheet, we will offer a refund or replacement. For full details of the Abpromise, please visit <https://www.abcam.co.jp/abpromise> or contact our technical team.

#### Terms and conditions

- Guarantee only valid for products bought direct from Abcam or one of our authorized distributors