

# Anti-Cathepsin V antibody ab124656

**2 References** [画像数 2](#)

### 製品の概要

製品名	Anti-Cathepsin V antibody
製品の詳細	Rabbit polyclonal to Cathepsin V
由来種	Rabbit
特異性	ab124656 detects endogenous levels of fragment of activated CATL2 resulting from cleavage adjacent to Leu114.
アプリケーション	<b>適用あり:</b> WB, IHC-P
種交差性	<b>交差種:</b> Human, African green monkey
免疫原	A synthetic peptide, corresponding to internal sequence amino acids of Human Cathepsin V.
ポジティブ・コントロール	Human breast tissue; 293 and COS cell extracts, treated with etoposide 25uM 1h.
特記事項	<p>The Life Science industry has been in the grips of a reproducibility crisis for a number of years. Abcam is leading the way in addressing this with our range of recombinant monoclonal antibodies and knockout edited cell lines for gold-standard validation. Please check that this product meets your needs before purchasing.</p> <p>If you have any questions, special requirements or concerns, please send us an inquiry and/or contact our Support team ahead of purchase. Recommended alternatives for this product can be found below, along with publications, customer reviews and Q&amp;As</p>

### 製品の特性

製品の状態	Liquid
保存方法	Shipped at 4°C. Store at -20°C. Stable for 12 months at -20°C.
バッファー	<p>pH: 7.40</p> <p>Preservative: 0.02% Sodium azide</p> <p>Constituents: 49% PBS, 0.88% Sodium chloride, 50% Glycerol (glycerin, glycerine)</p>
精製度	PBS (without $Mg^{2+}$ , $Ca^{2+}$ )
ポリ/モノ	Immunogen affinity purified
アイソタイプ	ポリクローナル
	IgG

## アプリケーション

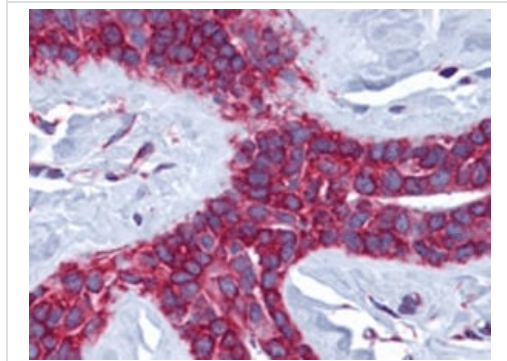
**The Abpromise guarantee** Abpromise保証は、 次のテスト済みアプリケーションにおけるab124656の使用に適用されます  
アプリケーションノートには、推奨の開始希釈率がありますが、適切な希釈率につきましてはご検討ください。

アプリケーション	Abreviews	特記事項
WB		1/500 - 1/1000. Predicted molecular weight: 37 kDa.
IHC-P		Use a concentration of 5 µg/ml. Perform heat mediated antigen retrieval with citrate buffer pH 6 before commencing with IHC staining protocol.

## ターゲット情報

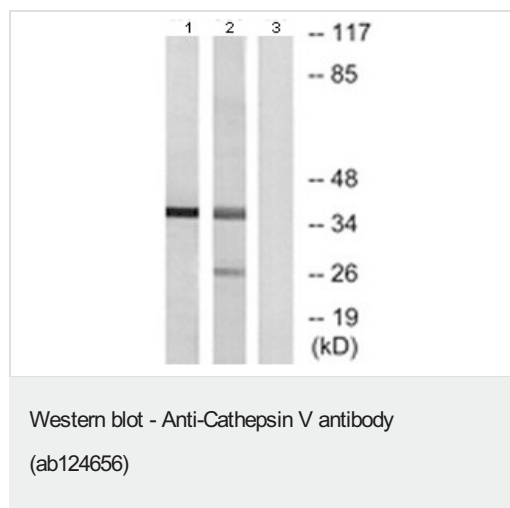
機能	Cysteine protease. May have an important role in corneal physiology.
組織特異性	Predominantly expressed in the thymus and testis. Also expressed in corneal epithelium, and to a lesser extent in conjunctival epithelium and skin.
配列類似性	Belongs to the peptidase C1 family.
細胞内局在	Lysosome.

## 画像



ab124656, at 1/500 dilution, staining Cathepsin V in Formalin-Fixed, Paraffin-Embedded Human breast tissue by Immunohistochemistry.

Immunohistochemistry (Formalin/PFA-fixed paraffin-embedded sections) - Anti-Cathepsin V antibody (ab124656)



**All lanes :** Anti-Cathepsin V antibody (ab124656) at 1/500 dilution

**Lane 1 :** 293 cell extracts, treated with etoposide 25uM 1h

**Lane 2 :** COS cell extracts, treated with etoposide 25uM 1h

**Lane 3 :** 293 cell extracts, treated with etoposide 25uM 1h with synthesized peptide

**Predicted band size:** 37 kDa

**Please note:** All products are "FOR RESEARCH USE ONLY. NOT FOR USE IN DIAGNOSTIC PROCEDURES"

### Our Abpromise to you: Quality guaranteed and expert technical support

- Replacement or refund for products not performing as stated on the datasheet
- Valid for 12 months from date of delivery
- Response to your inquiry within 24 hours
- We provide support in Chinese, English, French, German, Japanese and Spanish
- Extensive multi-media technical resources to help you
- We investigate all quality concerns to ensure our products perform to the highest standards

If the product does not perform as described on this datasheet, we will offer a refund or replacement. For full details of the Abpromise, please visit <https://www.abcam.co.jp/abpromise> or contact our technical team.

### Terms and conditions

- Guarantee only valid for products bought direct from Abcam or one of our authorized distributors