

Anti-Cathepsin L/V/K/H antibody [EPR8011] ab133641

リコンビナント **RabMAb**

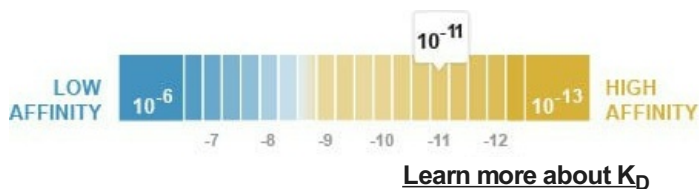
★★★★★ **6 Abreviews** **15 References** 画像数 **16**

製品の概要

製品名	Anti-Cathepsin L/V/K/H antibody [EPR8011]
製品の詳細	Rabbit monoclonal [EPR8011] to Cathepsin L/V/K/H
由来種	Rabbit
アプリケーション	適用あり: ICC/IF, WB, IHC-P, Flow Cyt (Intra), ELISA
種交差性	交差種: Mouse, Rat, Human
免疫原	Synthetic peptide within Human Cathepsin L/V/K/H aa 100-200. The exact sequence is proprietary. Database link: P07711
ポジティブ・コントロール	WB: A549, HCT-116, NIH/3T3, PC-12 and HepG2 whole cell lysate (ab7900). IHC-P: Human kidney tissue. ICC/IF: HepG2 cells.
特記事項	This product is a recombinant monoclonal antibody, which offers several advantages including: <ul style="list-style-type: none"> - High batch-to-batch consistency and reproducibility - Improved sensitivity and specificity - Long-term security of supply - Animal-free production For more information see here . Our RabMAb® technology is a patented hybridoma-based technology for making rabbit monoclonal antibodies. For details on our patents, please refer to RabMAb® patents .

製品の特性

製品の状態	Liquid
保存方法	Shipped at 4°C. Store at +4°C short term (1-2 weeks). Upon delivery aliquot. Store at -20°C. Stable for 12 months at -20°C.
解離定数 (K _D 値)	K _D = 4.40 x 10 ⁻¹¹ M



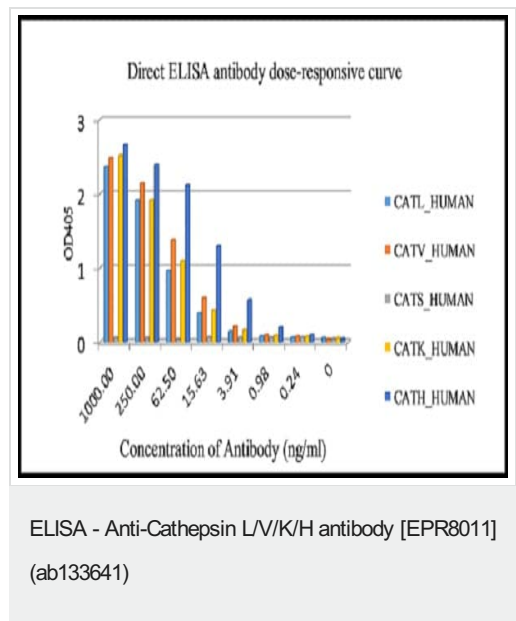
バッファー	pH: 7.20 Preservative: 0.01% Sodium azide Constituents: 59% PBS, 40% Glycerol, 0.05% BSA
精製度	Protein A purified
ポリ/モノ	モノクローナル
クローン名	EPR8011
アイソタイプ	IgG

アプリケーション

The Abpromise guarantee **Abpromise保証は、**次のテスト済みアプリケーションにおけるab133641の使用に適用されます
 アプリケーションノートには、推奨の開始希釈率がありますが、適切な希釈率につきましてはご検討ください。

アプリケーション	Abreviews	特記事項
ICC/IF	★★★★★ (2)	1/100.
WB	★★★★★ (3)	1/10000. Predicted molecular weight: 38 kDa. For unpurified use at 1/1000 - 1/10000.
IHC-P	★★★★★ (1)	1/50 - 1/100. Perform heat mediated antigen retrieval with citrate buffer pH 6 before commencing with IHC staining protocol. For unpurified use at 1/50 - 1/100.
Flow Cyt (Intra)		Use at an assay dependent concentration.
ELISA		Use at an assay dependent concentration.

画像



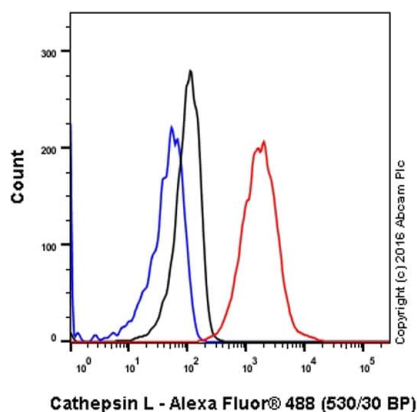
Antigen: CATL_HUMAN, CATV_HUMAN, CATS_HUMAN, CATK_HUMAN, CATH_HUMAN

Antigen concentration: 1000ng/ml

Primary antibody concentration range: 0~1000ng/ml

Secondary antibody: Alkaline Phosphatase-conjugated AffiniPure Goat Anti-Rabbit IgG(H+L)

Secondary antibody concentration: 1/2500

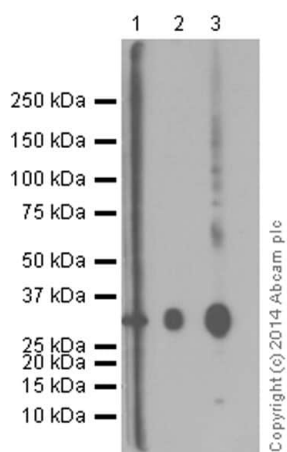


Flow Cytometry (Intracellular) - Anti-Cathepsin
L/V/K/H antibody [EPR8011] (ab133641)

ab133641 staining Cathepsin Lin the human cell line HepG2 (human hepatocellular carcinoma) by intracellular flow cytometry. Cells were fixed with 4% paraformaldehyde and the sample was incubated with the primary antibody at a dilution of 1/20. A goat anti rabbit IgG (Alexa Fluor® 488) at a dilution of 1/2000 was used as the secondary antibody.

Isoytype control: Rabbit monoclonal IgG (Black)

Unlabelled control: Cell without incubation with primary antibody and secondary antibody (Blue)



Western blot - Anti-Cathepsin L/V/K/H antibody
[EPR8011] (ab133641)

Lane 1 : Anti-Cathepsin L/V/K/H antibody [EPR8011] (ab133641) at 1/20 dilution

Lane 2 : Anti-Cathepsin L + V antibody [33/2] (**ab6314**) at 1/100 dilution

Lane 3 : Anti-His tag at 1/10000 dilution

All lanes : Human Cathepsin L recombinant protein fraction

Secondary

Lanes 1 & 3 : Peroxidase conjugated Goat Anti-Rabbit IgG, (H+L) at 1/1000 dilution

Lane 2 : Rabbit anti-Mouse IgG at 1/2000 dilution

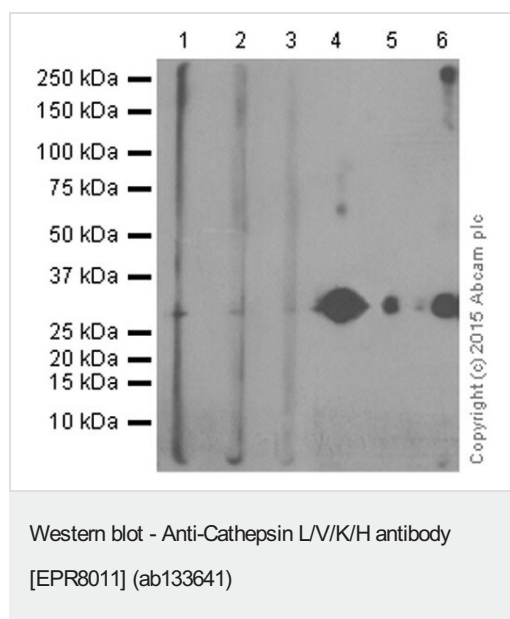
Predicted band size: 38 kDa

Blocking buffer and concentration:5% NFDM/TBST

Diluting buffer and concentration:5% NFDM/TBST

Observed MW:30

Exposure time:3 minutes



Lane 1 : Anti-Cathepsin L/V/K/H antibody [EPR8011] (ab133641) at 1/20 dilution

Lane 2 : Anti-Cathepsin L/V/K/H antibody [EPR8011] (ab133641) at 1/100 dilution

Lane 3 : Anti-Cathepsin L/V/K/H antibody [EPR8011] (ab133641) at 1/500 dilution

Lane 4 : Anti-Cathepsin L + V antibody [33/2] ([ab6314](#)) at 1/100 dilution

Lane 5 : Anti-Cathepsin L + V antibody [33/2] ([ab6314](#)) at 1/1000 dilution

Lane 6 : Anti-His tag at 1/10000 dilution

All lanes : Human Cathepsin V recombinant protein fraction

Secondary

Lanes 1-3 : Peroxidase conjugated Goat Anti-Rabbit IgG, (H+L) at 1/1000 dilution

Lanes 4-5 : Rabbit Anti-Mouse secondary ab at 1/2000 dilution

Lane 6 : Goat Anti-Rabbit IgG, (H+L), Peroxidase conjugated at 1/1000 dilution

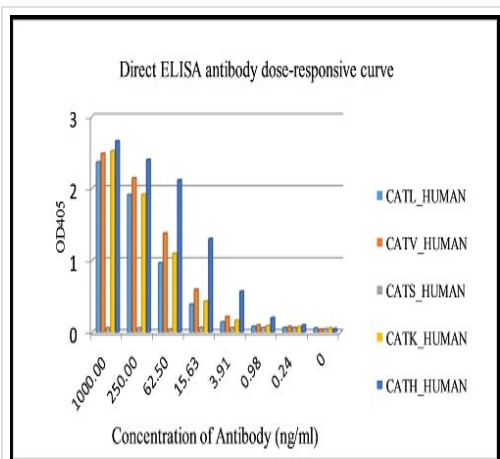
Predicted band size: 38 kDa

Blocking buffer and concentration: 5% NFDM/TBST

Diluting buffer and concentration: 5% NFDM/TBST

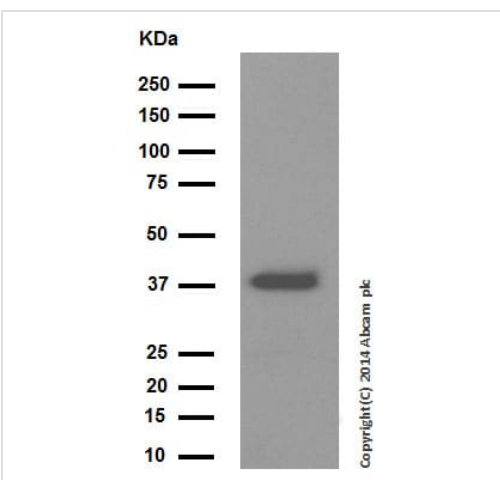
Observed MW: 30

Exposure time: 3 minutes



ELISA - Anti-Cathepsin L/V/K/H antibody [EPR8011]
(ab133641)

Direct ELISA antigen dose-response curve using purified ab133641. Antigen concentration of 1000ng/mL. Alkaline Phosphatase conjugated AffiniPure goat anti-rabbit IgG(H+L) (1/2500) was used as the secondary antibody.



Western blot - Anti-Cathepsin L/V/K/H antibody
[EPR8011] (ab133641)

Anti-Cathepsin L/V/K/H antibody [EPR8011] (ab133641) at 1/20000 dilution (purified) + HepG2 cell lysate at 20 µg

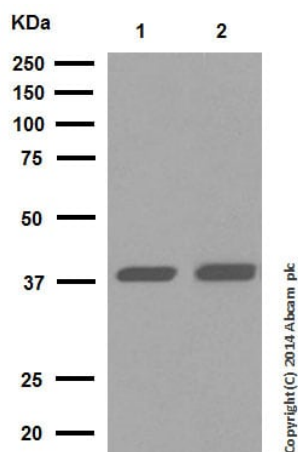
Secondary

Peroxidase conjugated goat anti-rabbit IgG (H+L) at 1/1000 dilution

Predicted band size: 38 kDa

Observed band size: 38 kDa

Blocking and dilution buffer: 5% NFDM/TBST.



Western blot - Anti-Cathepsin L/V/K/H antibody [EPR8011] (ab133641)

All lanes : Anti-Cathepsin L/V/K/H antibody [EPR8011] (ab133641) at 1/10000 dilution (purified)

Lane 1 : HCT-116 cell lysate

Lane 2 : A549 cell lysate

Lysates/proteins at 10 µg per lane.

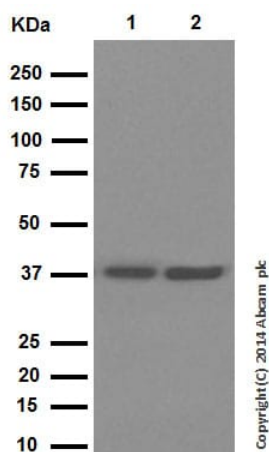
Secondary

All lanes : Peroxidase conjugated goat anti-rabbit IgG (H+L) at 1/1000 dilution

Predicted band size: 38 kDa

Observed band size: 38 kDa

Blocking and dilution buffer: 5% NFDM/TBST.



Western blot - Anti-Cathepsin L/V/K/H antibody [EPR8011] (ab133641)

All lanes : Anti-Cathepsin L/V/K/H antibody [EPR8011] (ab133641) at 1/20000 dilution (purified)

Lane 1 : NIH/3T3 cell lysate

Lane 2 : PC-12 cell lysate

Lysates/proteins at 20 µg per lane.

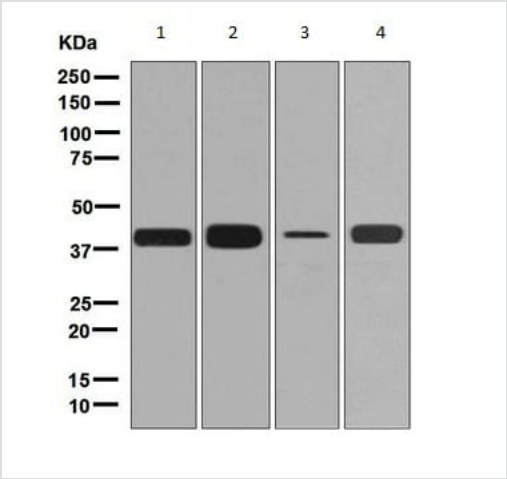
Secondary

All lanes : Peroxidase conjugated goat anti-rabbit IgG (H+L) at 1/1000 dilution

Predicted band size: 38 kDa

Observed band size: 38 kDa

Blocking and dilution buffer: 5% NFDM/TBST.



Western blot - Anti-Cathepsin L/V/K/H antibody [EPR8011] (ab133641)

All lanes : Anti-Cathepsin L/V/K/H antibody [EPR8011] (ab133641) at 1/1000 dilution (unpurified)

Lane 1 : A549 cell lysate

Lane 2 : HCT-116 cell lysate

Lane 3 : NIH/3T3 cell lysate

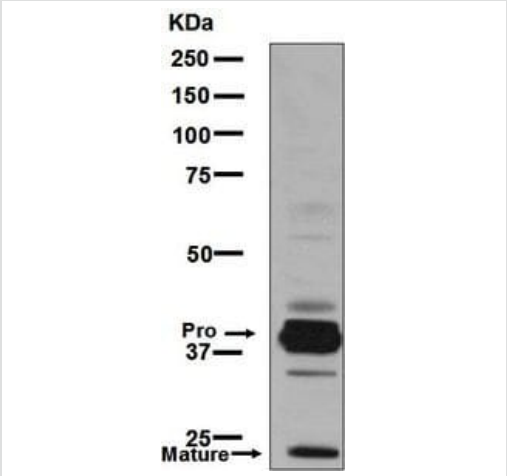
Lane 4 : PC-12 cell lysate

Lysates/proteins at 10 µg per lane.

Secondary

All lanes : HRP-conjugated goat anti-rabbit IgG at 1/2000 dilution

Predicted band size: 38 kDa



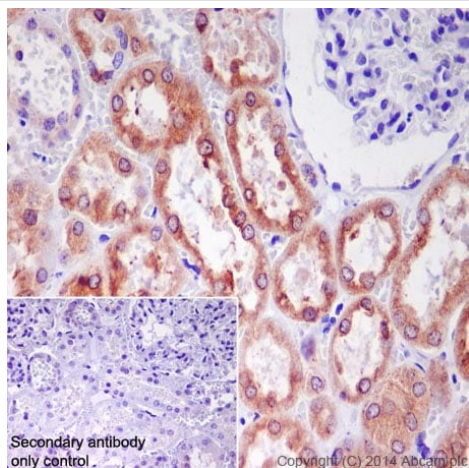
Western blot - Anti-Cathepsin L/V/K/H antibody [EPR8011] (ab133641)

Anti-Cathepsin L/V/K/H antibody [EPR8011] (ab133641) at 1/1000 dilution (unpurified) + HepG2 cell lysate at 10 µg

Secondary

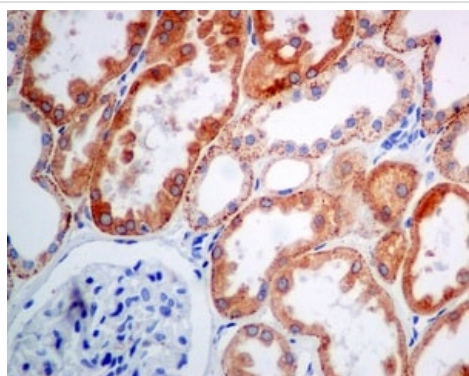
HRP-conjugated goat anti-rabbit IgG at 1/2000 dilution

Predicted band size: 38 kDa



Immunohistochemistry (Formalin/PFA-fixed paraffin-embedded sections) - Anti-Cathepsin L/V/K/H antibody [EPR8011] (ab133641)

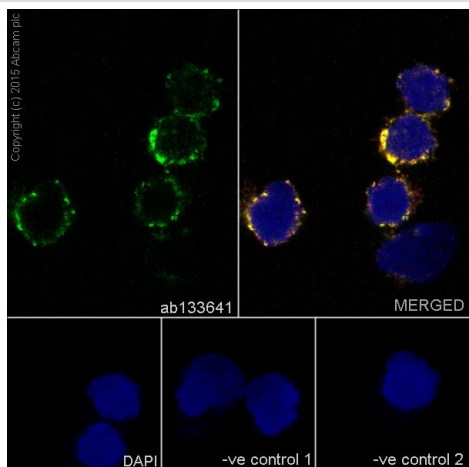
Immunohistochemistry (Formalin/PFA-fixed paraffin-embedded sections) analysis of human kidney tissue labelling Cathepsin L with purified ab133641 at 1/100. Heat mediated antigen retrieval was performed using Tris/EDTA buffer pH 9. **ab97051**, a HRP-conjugated goat anti-rabbit IgG (H+L) was used as the secondary antibody (1/500). Negative control using PBS instead of primary antibody. Counterstained with hematoxylin.



Immunohistochemistry (Formalin/PFA-fixed paraffin-embedded sections) - Anti-Cathepsin L/V/K/H antibody [EPR8011] (ab133641)

Immunohistochemistry (Formalin/PFA-fixed paraffin-embedded sections) analysis of human kidney tissue labelling Cathepsin L with unpurified ab133641 at a 1/50 dilution.

Perform heat mediated antigen retrieval with citrate buffer pH 6 before commencing with IHC staining protocol.

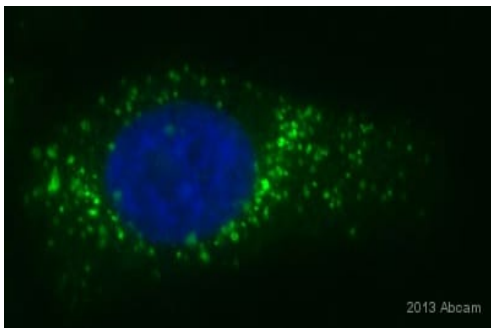


Immunocytochemistry/ Immunofluorescence - Anti-Cathepsin L/V/K/H antibody [EPR8011] (ab133641)

Immunocytochemistry/Immunofluorescence analysis of HT-29 cells labelling Cathepsin L with purified ab133641 at 1/100. Cells were fixed with 100% methanol and permeabilized with 0.1% Triton X-100. **ab150077**, an Alexa Fluor[®] 488-conjugated goat anti-rabbit IgG (1/500) was used as the secondary antibody. DAPI (blue) was used as the nuclear counterstain. **ab7291**, a mouse anti-tubulin (1/500) and **ab150120**, an Alexa Fluor[®] 594-conjugated goat anti-mouse IgG (1/500) were also used.

Control 1: primary antibody (1/100) and secondary antibody, **ab150120**, an Alexa Fluor[®] 594-conjugated goat anti-mouse IgG (1/500).

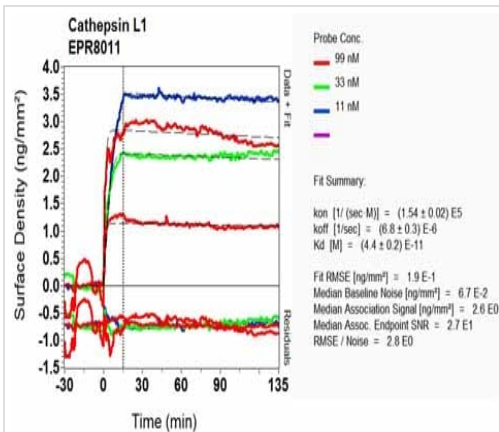
Control 2: **ab7291** (1/1000) and secondary antibody, **ab150077**, an Alexa Fluor[®] 488-conjugated goat anti-rabbit IgG (1/500).



Immunocytochemistry/ Immunofluorescence - Anti-Cathepsin L/V/K/H antibody [EPR8011] (ab133641)

This image is courtesy of an Abreview submitted by Alina Macovei

Unpurified ab133641 staining Cathepsin L in Human HepaRG cell by ICC/IF (Immunocytochemistry/immunofluorescence). Cells were fixed with formaldehyde, permeabilized with 0.1% Triton X-100 and blocked with 1% milk for 30 minutes at room temperature. Samples were incubated with primary antibody (1/1000) for 30 minutes. An Alexa Fluor® 488-conjugated Donkey anti-rabbit IgG polyclonal (1/400) was used as the secondary antibody.



Osc-RD Scanning - Anti-Cathepsin L/V/K/H antibody [EPR8011] (ab133641)

Equilibrium dissociation constant (K_D)

Learn more about K_D

[Click here to learn more about \$K_D\$](#)

Why choose a recombinant antibody?



Research with confidence
Consistent and reproducible results



Long-term and scalable supply
Recombinant technology



Success from the first experiment
Confirmed specificity



Ethical standards compliant
Animal-free production

Anti-Cathepsin L/V/K/H antibody [EPR8011] (ab133641)

Please note: All products are "FOR RESEARCH USE ONLY. NOT FOR USE IN DIAGNOSTIC PROCEDURES"

Our Abpromise to you: Quality guaranteed and expert technical support

- Replacement or refund for products not performing as stated on the datasheet
- Valid for 12 months from date of delivery
- Response to your inquiry within 24 hours

- We provide support in Chinese, English, French, German, Japanese and Spanish
- Extensive multi-media technical resources to help you
- We investigate all quality concerns to ensure our products perform to the highest standards

If the product does not perform as described on this datasheet, we will offer a refund or replacement. For full details of the Abpromise, please visit <https://www.abcam.co.jp/abpromise> or contact our technical team.

Terms and conditions

- Guarantee only valid for products bought direct from Abcam or one of our authorized distributors