


### Anti-Cathepsin L + V antibody [33/2] ab6314

★★★★★ **5 Abreviews**   **32 References**   画像数 5

#### 製品の概要

製品名	Anti-Cathepsin L + V antibody [33/2]
製品の詳細	Mouse monoclonal [33/2] to Cathepsin L + V
由来種	Mouse
特異性	Reacts specifically with the native and denatured forms of human cathepsin L (25kD) and procathepsin L (42 kD). Does not react with human cathepsin types B1, D1, H and S1, procathepsins B and D1 and recombinant procathepsin H, rat cathepsin B1, and mouse procathepsins B1 and D1.
アプリケーション	<b>適用あり:</b> WB, IHC-P <b>適用なし:</b> Flow Cyt
種交差性	<b>交差種:</b> Mouse, Human <b>交差が予測される動物種:</b> Rat 
免疫原	Full length native protein (purified). This information is proprietary to Abcam and/or its suppliers.
エピトープ	Recognizes an epitope within amino acid residues GYGFEET (265-271 in procathepsin L and 169-175 in the mature cathepsin L molecule).
ポジティブ・コントロール	WB: Human and Mouse lung tissue lysates. Human, Mouse tissue lysates. IHC-P: FFPE Human colon adenocarcinoma tissue sections.
特記事項	<p>This antibody clone is manufactured by Abcam. If you require a custom buffer formulation or conjugation for your experiments, please contact <a href="mailto:orders@abcam.com">orders@abcam.com</a>.</p> <p>The Life Science industry has been in the grips of a reproducibility crisis for a number of years. Abcam is leading the way in addressing this with our range of recombinant monoclonal antibodies and knockout edited cell lines for gold-standard validation. Please check that this product meets your needs before purchasing.</p> <p>If you have any questions, special requirements or concerns, please send us an inquiry and/or contact our Support team ahead of purchase. Recommended alternatives for this product can be found below, along with publications, customer reviews and Q&amp;As</p>

#### 製品の特性

製品の状態	Liquid
保存方法	Shipped at 4°C. Store at +4°C short term (1-2 weeks). Upon delivery aliquot. Store at -20°C or -80°C. Avoid freeze / thaw cycle.

**バッファー** pH: 7.40  
Preservative: 0.02% Sodium azide  
Constituents: PBS, 6.97% L-Arginine

Some batches contain 6.97% L-Arginine as a stabilizing agent. For lot-specific buffer information, please contact our Scientific Support team.

**精製度** Protein G purified  
**ポリ/モノ** モノクローナル  
**クローン名** 33/2  
**アイソタイプ** IgG1

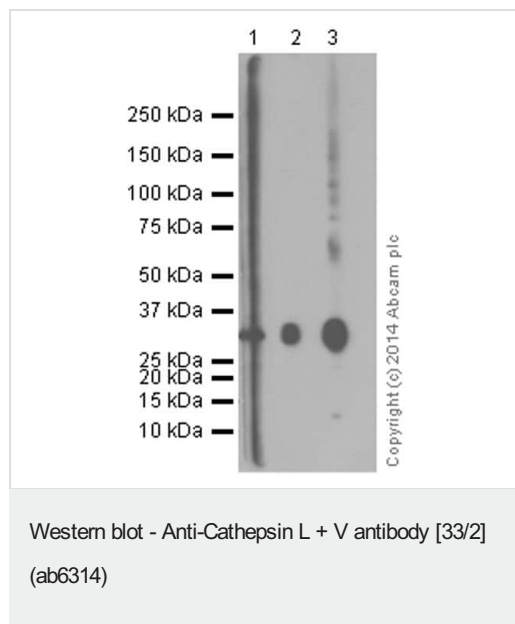
## アプリケーション

**The Abpromise guarantee** Abpromise保証は、次のテスト済みアプリケーションにおけるab6314の使用に適用されます  
アプリケーションノートには、推奨の開始希釈率がありますが、適切な希釈率につきましてはご検討ください。

アプリケーション	Abreviews	特記事項
WB	★★★★★ (4)	1/1000. Detects a band of approximately 25 kDa (predicted molecular weight: 38 kDa). Abcam recommends using 3% milk as the blocking agent.
IHC-P	★★★★★ (1)	Use at an assay dependent concentration.

**追加情報** Is unsuitable for Flow Cyt.

## 画像



**Lane 1 :** Anti-Cathepsin L/V/K/H antibody [EPR8011] ([ab133641](#))  
at 1/20 dilution

**Lane 2 :** Anti-Cathepsin L + V antibody [33/2] (ab6314) at 1/100  
dilution

**Lane 3 :** Anti-His tag at 1/10000 dilution

**All lanes :** Human Cathepsin L recombinant protein fraction

### Secondary

**Lanes 1 & 3 :** Peroxidase conjugated Goat Anti-Rabbit IgG, (H+L)  
at 1/1000 dilution

**Lane 2 :** Rabbit anti-Mouse IgG at 1/2000 dilution

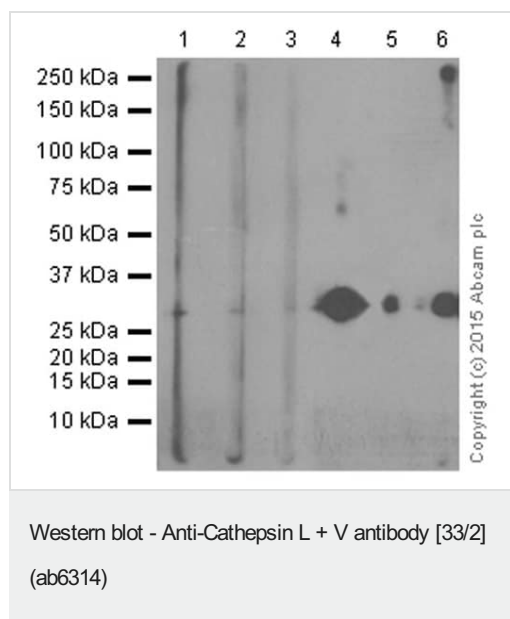
**Predicted band size:** 38 kDa

Blocking buffer and concentration:5% NFDm/TBST

Diluting buffer and concentration:5% NFDm/TBST

Observed MW:30

Exposure time:3 minutes



**Lane 1 :** Anti-Cathepsin L/V/K/H antibody [EPR8011] ([ab133641](#))

at 1/20 dilution

**Lane 2 :** Anti-Cathepsin L/V/K/H antibody [EPR8011] ([ab133641](#))

at 1/100 dilution

**Lane 3 :** Anti-Cathepsin L/V/K/H antibody [EPR8011] ([ab133641](#))

at 1/500 dilution

**Lane 4 :** Anti-Cathepsin L + V antibody [33/2] (ab6314) at 1/100

dilution

**Lane 5 :** Anti-Cathepsin L + V antibody [33/2] (ab6314) at 1/1000

dilution

**Lane 6 :** Anti-His tag at 1/10000 dilution

**All lanes :** Human Cathepsin V recombinant protein fraction

### Secondary

**Lanes 1-3 :** Peroxidase conjugated Goat Anti-Rabbit IgG, (H+L) at

1/1000 dilution

**Lanes 4-5 :** Rabbit Anti-Mouse secondary ab at 1/2000 dilution

**Lane 6 :** Goat Anti-Rabbit IgG, (H+L), Peroxidase conjugated at

1/1000 dilution

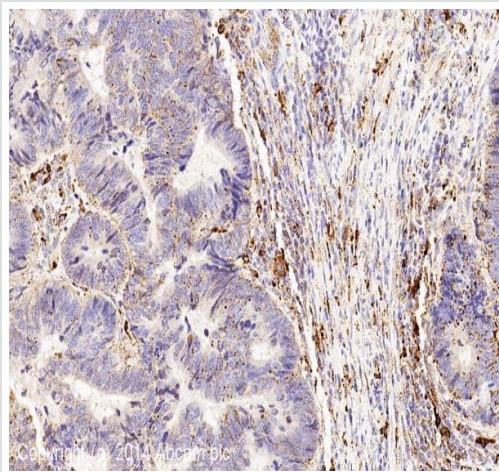
**Predicted band size:** 38 kDa

Blocking buffer and concentration:5% NFDm/TBST

Diluting buffer and concentration:5% NFDm/TBST

Observed MW:30

Exposure time:3 minutes

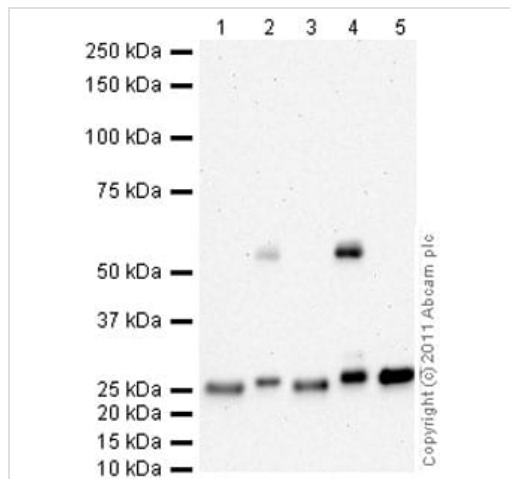


Immunohistochemistry (Formalin/PFA-fixed paraffin-embedded sections) - Anti-Cathepsin L + V antibody [33/2] (ab6314)

IHC image of Cathepsin L staining in human colon adenocarcinoma formalin fixed paraffin embedded tissue section\*, performed on a Leica Bond™ system using the standard protocol F. The section was pre-treated using heat mediated antigen retrieval with sodium citrate buffer (pH6, epitope retrieval solution 1) for 20 mins. The section was then incubated with ab6314, 0.5µg/ml, for 15 mins at room temperature and detected using an HRP conjugated compact polymer system. DAB was used as the chromogen. The section was then counterstained with haematoxylin and mounted with DPX.

For other IHC staining systems (automated and non-automated) customers should optimize variable parameters such as antigen retrieval conditions, primary antibody concentration and antibody incubation times.

\*Tissue obtained from the Human Research Tissue Bank, supported by the NIHR Cambridge Biomedical Research Centre



Western blot - Anti-Cathepsin L + V antibody [33/2] (ab6314)

**All lanes** : Anti-Cathepsin L + V antibody [33/2] (ab6314) at 1/1000 dilution (3% milk block)

**Lane 1** : Lung (Human) Tissue Lysate

**Lane 2** : Lung (Mouse) Tissue Lysate

**Lane 3** : Human kidney tissue lysate - total protein ([ab30203](#))

**Lane 4** : Kidney (Mouse) Tissue Lysate

**Lane 5** : A549 whole cell lysate

Lysates/proteins at 20 µg per lane.

### Secondary

**All lanes** : Goat Anti-Mouse IgG H&L (HRP) preadsorbed ([ab97040](#)) at 1/5000 dilution

Developed using the ECL technique.

Performed under reducing conditions.

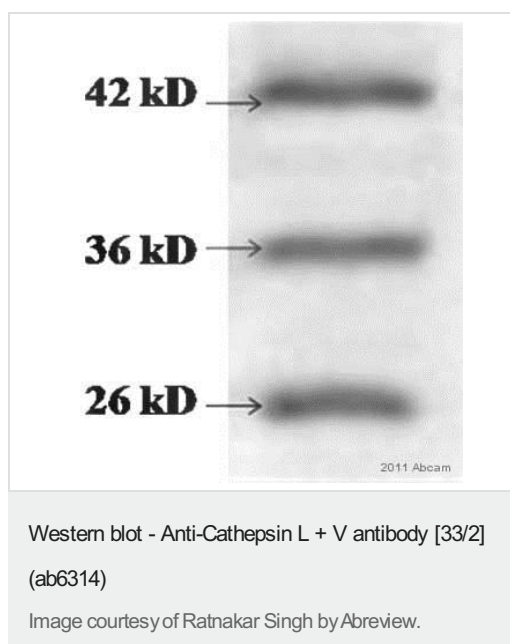
**Predicted band size:** 38 kDa

**Observed band size:** 25 kDa

**Additional bands at:** 55 kDa. We are unsure as to the identity of these extra bands.

**Exposure time:** 20 minutes

Abcam recommends using milk as the blocking agent. Abcam welcomes customer feedback and would appreciate any comments regarding this product and the data presented above.



Anti-Cathepsin L + V antibody [33/2] (ab6314) at 1/750 dilution + whole cell lysate prepared from U87MG human glioblastoma at 50 µg

**Secondary**

Goat anti-mouse HRP at 1/2000 dilution

**Predicted band size:** 38 kDa

**Please note:** All products are "FOR RESEARCH USE ONLY. NOT FOR USE IN DIAGNOSTIC PROCEDURES"

**Our Abpromise to you: Quality guaranteed and expert technical support**

- Replacement or refund for products not performing as stated on the datasheet
- Valid for 12 months from date of delivery
- Response to your inquiry within 24 hours
- We provide support in Chinese, English, French, German, Japanese and Spanish
- Extensive multi-media technical resources to help you
- We investigate all quality concerns to ensure our products perform to the highest standards

If the product does not perform as described on this datasheet, we will offer a refund or replacement. For full details of the Abpromise, please visit <https://www.abcam.co.jp/abpromise> or contact our technical team.

**Terms and conditions**

- Guarantee only valid for products bought direct from Abcam or one of our authorized distributors