


Anti-Cathepsin K antibody ab85716

[1 References](#) [画像数 1](#)

製品の概要

製品名	Anti-Cathepsin K antibody
製品の詳細	Rabbit polyclonal to Cathepsin K
由来種	Rabbit
アプリケーション	適用あり: WB
種交差性	交差種: Human 交差が予測される動物種: Mouse, Rat, Chicken, Cow, Dog, Pig, Non human primates 
免疫原	Synthetic peptide corresponding to Human Cathepsin K aa 250 to the C-terminus conjugated to keyhole limpet haemocyanin. (Peptide available as ab97980)
ポジティブ・コントロール	This antibody gave a positive signal in the following lysates: Human Bone Marrow Tissue; Human Lung Tissue; U2OS Whole Cell; MCF7 Whole Cell; MDA-MB-231 Whole Cell; MDA-MB-361 Whole Cell; Saos 2 Whole Cell.
特記事項	<p>The Life Science industry has been in the grips of a reproducibility crisis for a number of years. Abcam is leading the way in addressing this with our range of recombinant monoclonal antibodies and knockout edited cell lines for gold-standard validation. Please check that this product meets your needs before purchasing.</p> <p>If you have any questions, special requirements or concerns, please send us an inquiry and/or contact our Support team ahead of purchase. Recommended alternatives for this product can be found below, along with publications, customer reviews and Q&As</p>

製品の特性

製品の状態	Liquid
保存方法	Shipped at 4°C. Store at +4°C short term (1-2 weeks). Upon delivery aliquot. Store at -20°C or -80°C. Avoid freeze / thaw cycle.
バッファー	pH: 7.40 Preservative: 0.02% Sodium azide Constituent: PBS
	Batches of this product that have a concentration < 1mg/ml may have BSA added as a stabilising agent. If you would like information about the formulation of a specific lot, please contact our scientific support team who will be happy to help.

精製度	Immunogen affinity purified
ポリ/モノ	ポリクローナル
アイソタイプ	IgG

アプリケーション

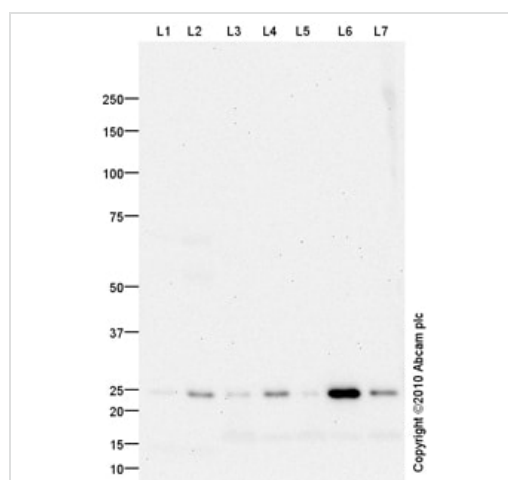
The Abpromise guarantee **Abpromise保証は、次のテスト済みアプリケーションにおけるab85716の使用に適用されます**
 アプリケーションノートには、推奨の開始希釈率がありますが、適切な希釈率につきましてはご検討ください。

アプリケーション	Abreviews	特記事項
WB		Use a concentration of 1 µg/ml. Detects a band of approximately 24 kDa (predicted molecular weight: 37 kDa).

ターゲット情報

機能	Closely involved in osteoclastic bone resorption and may participate partially in the disorder of bone remodeling. Displays potent endoprotease activity against fibrinogen at acid pH. May play an important role in extracellular matrix degradation.
組織特異性	Predominantly expressed in osteoclasts (bones).
関連疾患	Defects in CTSK are the cause of pycnodysostosis (PKND) [MIM:265800]. PKND is an autosomal recessive osteochondrodysplasia characterized by osteosclerosis and short stature.
配列類似性	Belongs to the peptidase C1 family.
細胞内局在	Lysosome.

画像



Western blot - Anti-Cathepsin K antibody (ab85716)

All lanes : Anti-Cathepsin K antibody (ab85716) at 1 µg/ml

Lane 1 : Bone marrow (Human) Tissue Lysate

Lane 2 : Lung (Human) Tissue Lysate

Lane 3 : U2OS (Human osteosarcoma cell line) Whole Cell Lysate
Lane 4 : MCF7 (Human breast adenocarcinoma cell line) Whole Cell Lysate

Lane 5 : MDA-MB-231 (Human breast adenocarcinoma cell line) Whole Cell Lysate

Lane 6 : MDA-MB-361 (Human breast adenocarcinoma cell line) Whole Cell Lysate

Lane 7 : Saos 2 (Human epithelial-like osteosarcoma cell line) Whole Cell Lysate

Lysates/proteins at 10 µg per lane.

Secondary

All lanes : Goat polyclonal to Rabbit IgG - H&L - Pre-Adsorbed (HRP) at 1/3000 dilution

Developed using the ECL technique.

Performed under reducing conditions.

Predicted band size: 37 kDa

Observed band size: 24 kDa

Exposure time: 20 minutes

We hypothesize that the 24 kDa band represents the mature form of Cathepsin K.

Please note: All products are "FOR RESEARCH USE ONLY. NOT FOR USE IN DIAGNOSTIC PROCEDURES"

Our Abpromise to you: Quality guaranteed and expert technical support

- Replacement or refund for products not performing as stated on the datasheet
- Valid for 12 months from date of delivery
- Response to your inquiry within 24 hours

- We provide support in Chinese, English, French, German, Japanese and Spanish
- Extensive multi-media technical resources to help you
- We investigate all quality concerns to ensure our products perform to the highest standards

If the product does not perform as described on this datasheet, we will offer a refund or replacement. For full details of the Abpromise, please visit <https://www.abcam.co.jp/abpromise> or contact our technical team.

Terms and conditions

- Guarantee only valid for products bought direct from Abcam or one of our authorized distributors