

# Anti-Cathepsin G antibody ab49854

[2 References](#) [画像数 1](#)

### 製品の概要

---

製品名	Anti-Cathepsin G antibody
製品の詳細	Rabbit polyclonal to Cathepsin G
由来種	Rabbit
アプリケーション	<b>適用あり:</b> WB
種交差性	<b>交差種:</b> Human
免疫原	A synthetic peptide based on the propeptide domain and the N terminus of active human cathepsin G
特記事項	<p>The Life Science industry has been in the grips of a reproducibility crisis for a number of years. Abcam is leading the way in addressing this with our range of recombinant monoclonal antibodies and knockout edited cell lines for gold-standard validation. Please check that this product meets your needs before purchasing.</p> <p>If you have any questions, special requirements or concerns, please send us an inquiry and/or contact our Support team ahead of purchase. Recommended alternatives for this product can be found below, along with publications, customer reviews and Q&amp;As</p>

### 製品の特性

---

製品の状態	Liquid
保存方法	Shipped at 4°C. Store at -20°C. Stable for 12 months at -20°C.
バッファー	pH: 7.40 Preservative: 0.05% Sodium azide Constituents: PBS, 50% Glycerol, 2.9% Sodium chloride
精製度	Immunogen affinity purified
ポリクローナル	ポリクローナル
アイソタイプ	IgG

### アプリケーション

---

**The Abpromise guarantee** Abpromise保証は、次のテスト済みアプリケーションにおけるab49854の使用に適用されます  
アプリケーションノートには、推奨の開始希釈率がありますが、適切な希釈率につきましてはご検討ください。

アプリケーション	Abreviews	特記事項
WB		

#### 追加情報

WB: 1/1000 when using colorimetric substrates such as BCIP/NBT, and 1/5000 for chemiluminescent substrates. Predicted molecular weight: 29 kDa. Dilution optimised using Chromogenic detection. Not yet tested in other applications. Optimal dilutions/concentrations should be determined by the end user.

#### ターゲット情報

##### 機能

Serine protease with trypsin- and chymotrypsin-like specificity. Cleaves complement C3. Has antibacterial activity against the Gram-negative bacterium *P.aeruginosa*, antibacterial activity is inhibited by LPS from *P.aeruginosa*, Z-Gly-Leu-Phe-CH<sub>2</sub>Cl and phenylmethylsulfonyl fluoride.

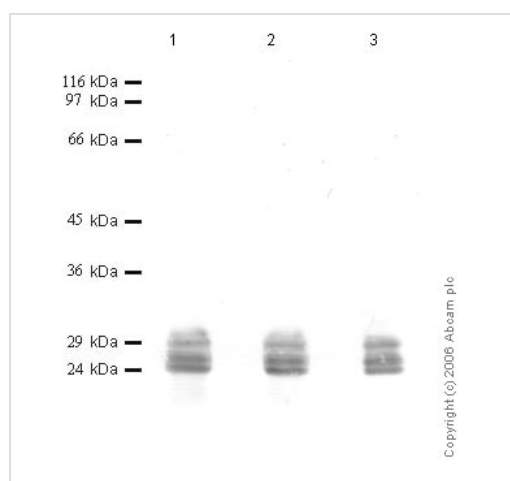
##### 配列類似性

Belongs to the peptidase S1 family.  
Contains 1 peptidase S1 domain.

##### 細胞内局在

Cell surface.

#### 画像



Western blot - Anti-Cathepsin G antibody (ab49854)

**All lanes** : Anti-Cathepsin G antibody (ab49854) at 1/1000 dilution

**Lane 1** : Human Cathepsin G at 0.01 µg

**Lane 2** : Human Cathepsin G at 0.005 µg

**Lane 3** : Human Cathepsin G at 0.002 µg

**Predicted band size:** 29 kDa

**Observed band size:** 24,25,29 kDa

**Please note:** All products are "FOR RESEARCH USE ONLY. NOT FOR USE IN DIAGNOSTIC PROCEDURES"

#### Our Abpromise to you: Quality guaranteed and expert technical support

- Replacement or refund for products not performing as stated on the datasheet
- Valid for 12 months from date of delivery
- Response to your inquiry within 24 hours
- We provide support in Chinese, English, French, German, Japanese and Spanish
- Extensive multi-media technical resources to help you

- We investigate all quality concerns to ensure our products perform to the highest standards

If the product does not perform as described on this datasheet, we will offer a refund or replacement. For full details of the Abpromise, please visit <https://www.abcam.co.jp/abpromise> or contact our technical team.

### **Terms and conditions**

---

- Guarantee only valid for products bought direct from Abcam or one of our authorized distributors