




Anti-Cathepsin F antibody ab36161

1 References [画像数 1](#)

製品の概要

製品名	Anti-Cathepsin F antibody
製品の詳細	Goat polyclonal to Cathepsin F
由来種	Goat
アプリケーション	適用あり: WB
種交差性	交差種: Human 交差が予測される動物種: Mouse, Dog 
免疫原	Synthetic peptide: CGVNTMASSAVVD , corresponding to C terminal amino acids 472-484 of Human Cathepsin F <div>  Run BLAST with  Run BLAST with </div>
特記事項	<p>The Life Science industry has been in the grips of a reproducibility crisis for a number of years. Abcam is leading the way in addressing this with our range of recombinant monoclonal antibodies and knockout edited cell lines for gold-standard validation. Please check that this product meets your needs before purchasing.</p> <p>If you have any questions, special requirements or concerns, please send us an inquiry and/or contact our Support team ahead of purchase. Recommended alternatives for this product can be found below, along with publications, customer reviews and Q&As</p>

製品の特性

製品の状態	Liquid
保存方法	Shipped at 4°C. Upon delivery aliquot and store at -20°C. Avoid freeze / thaw cycles.
バッファー	pH: 7.30 Preservative: 0.02% Sodium azide Constituent: 0.5% BSA
精製度	Immunogen affinity purified
特記事項 (精製)	Purified from goat serum by ammonium sulphate precipitation followed by antigen affinity chromatography using the immunizing peptide.
ポリ/モノ	ポリクローナル
アイソタイプ	IgG

アプリケーション

The Abpromise guarantee

Abpromise保証は、次のテスト済みアプリケーションにおけるab36161の使用に適用されます

アプリケーションノートには、推奨の開始希釈率がありますが、適切な希釈率につきましてはご検討ください。

アプリケーション	Abreviews	特記事項
WB		

追加情報

Peptide ELISA: Antibody detection limit dilution 1:32,000.

WB: Use at a concentration of 0.3 - 1 µg/ml. Predicted molecular weight: 53 kDa.

Not yet tested in other applications.

Optimal dilutions/concentrations should be determined by the end user.

ターゲット情報

機能

Thiol protease which is believed to participate in intracellular degradation and turnover of proteins. Has also been implicated in tumor invasion and metastasis.

組織特異性

High expression levels in heart, skeletal muscle, brain, testis and ovary; moderate levels in prostate, placenta, liver and colon; and no detectable expression in peripheral leukocytes and thymus.

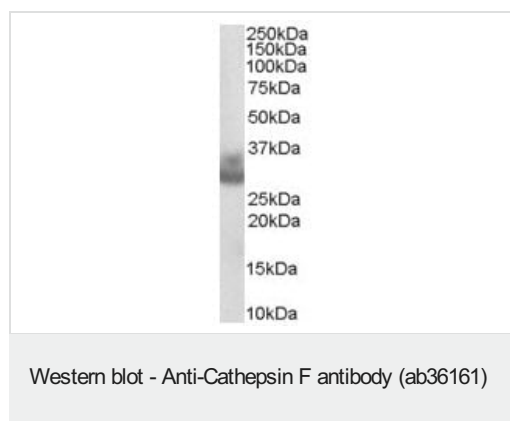
配列類似性

Belongs to the peptidase C1 family.

細胞内局在

Lysosome.

画像



Anti-Cathepsin F antibody (ab36161) at 0.3 µg/ml + Human Ovary lysate (35µg protein in RIPA buffer).

Predicted band size: 53 kDa

Primary incubation was 1 hour. Detected by chemiluminescence. Experiments gave bands at approx 30kDa and 35kDa in Human Prostate and Ovary lysates after 0.3µg/ml antibody staining. These bands correspond to earlier findings in literature (Wang et al, J Biol Chem. 1998 Nov 27;273(48):32000-8; PMID: 9822672). This protein has a calculated MW of 53.4kDa according to NP_003784.2.

Please note: All products are "FOR RESEARCH USE ONLY. NOT FOR USE IN DIAGNOSTIC PROCEDURES"

Our Abpromise to you: Quality guaranteed and expert technical support

- Replacement or refund for products not performing as stated on the datasheet
- Valid for 12 months from date of delivery
- Response to your inquiry within 24 hours

- We provide support in Chinese, English, French, German, Japanese and Spanish
- Extensive multi-media technical resources to help you
- We investigate all quality concerns to ensure our products perform to the highest standards

If the product does not perform as described on this datasheet, we will offer a refund or replacement. For full details of the Abpromise, please visit <https://www.abcam.co.jp/abpromise> or contact our technical team.

Terms and conditions

- Guarantee only valid for products bought direct from Abcam or one of our authorized distributors