

Anti-Cathepsin B antibody [EPR4323] ab125067

リコンビナント RabMAb[®]

18 References [画像数 5](#)

製品の概要

製品名	Anti-Cathepsin B antibody [EPR4323]
製品の詳細	Rabbit monoclonal [EPR4323] to Cathepsin B
由来種	Rabbit
アプリケーション	適用あり: WB, IHC-P, ICC/IF 適用なし: Flow Cyt or IP
種交差性	交差種: Human 非交差種: Mouse, Rat
免疫原	Synthetic peptide within Human Cathepsin B aa 1-200. The exact sequence is proprietary.
ポジティブ・コントロール	Human kidney and papillary carcinoma tissues; HeLa cells; HT1080, A375, SW480 and A549 cell line lysates.
特記事項	This product is a recombinant monoclonal antibody, which offers several advantages including: <ul style="list-style-type: none">- High batch-to-batch consistency and reproducibility- Improved sensitivity and specificity- Long-term security of supply- Animal-free production For more information see here . Our RabMAb [®] technology is a patented hybridoma-based technology for making rabbit monoclonal antibodies. For details on our patents, please refer to RabMAb[®] patents .

製品の特性

製品の状態	Liquid
保存方法	Shipped at 4°C. Store at -20°C. Stable for 12 months at -20°C.
バッファー	pH: 7.20 Preservative: 0.01% Sodium azide Constituents: 9% PBS, 40% Glycerol (glycerin, glycerine), 0.05% BSA, 50% Tissue culture supernatant
精製度	Protein A purified
ポリクローナル	モノクローナル
クローン名	EPR4323

アイソタイプ

IgG

アプリケーション

The Abpromise guarantee Abpromise保証は、次のテスト済みアプリケーションにおけるab125067の使用に適用されます
アプリケーションノートには、推奨の開始希釈率がありますが、適切な希釈率につきましてはご検討ください。

アプリケーション	Abreviews	特記事項
WB		1/1000 - 1/10000. Predicted molecular weight: 38 kDa.
IHC-P		1/50 - 1/100. Perform heat mediated antigen retrieval with citrate buffer pH 6 before commencing with IHC staining protocol.
ICC/IF		1/50 - 1/100.

追加情報

Is unsuitable for Flow Cyt or IP.

ターゲット情報

機能

Thiol protease which is believed to participate in intracellular degradation and turnover of proteins. Has also been implicated in tumor invasion and metastasis.

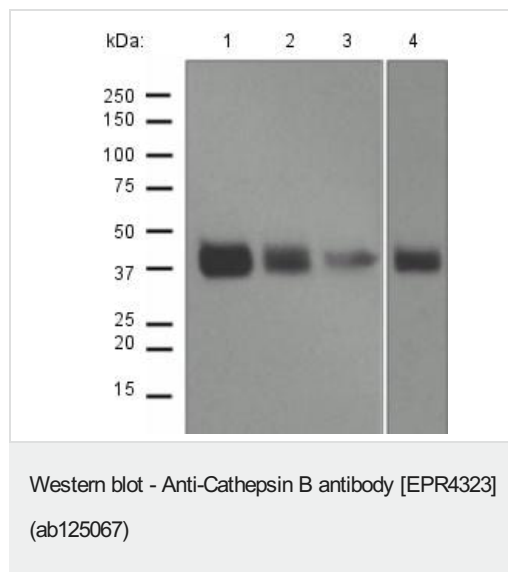
配列類似性

Belongs to the peptidase C1 family.

細胞内局在

Lysosome. Melanosome. Identified by mass spectrometry in melanosome fractions from stage I to stage IV.

画像



All lanes : Anti-Cathepsin B antibody [EPR4323] (ab125067) at 1/1000 dilution

Lane 1 : HT1080 cell lysate

Lane 2 : A375 cell lysate

Lane 3 : SW480 cell lysate

Lane 4 : A549 cell lysate

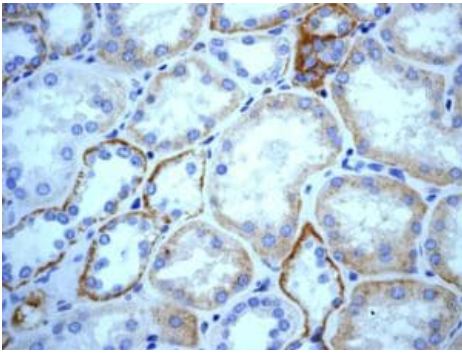
Lysates/proteins at 10 µg per lane.

Secondary

All lanes : Goat anti-Rabbit HRP at 1/2000 dilution

Developed using the ECL technique.

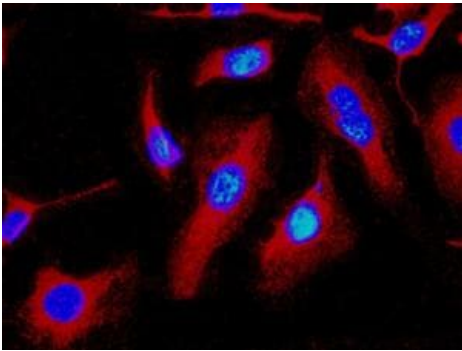
Predicted band size: 38 kDa



Immunohistochemistry (Formalin/PFA-fixed paraffin-embedded sections) - Anti-Cathepsin B antibody [EPR4323] (ab125067)

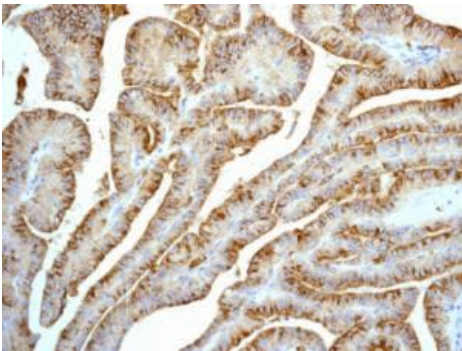
ab125067, at a 1/50 dilution, staining Cathepsin B in paraffin-embedded Human kidney tissue by immunohistochemistry.

Perform heat mediated antigen retrieval with citrate buffer pH 6 before commencing with IHC staining protocol.



Immunocytochemistry/ Immunofluorescence - Anti-Cathepsin B antibody [EPR4323] (ab125067)

ab125067, at a 1/50 dilution, staining Cathepsin B (red) in HeLa cells by immunofluorescence. DNA is marked in blue.



Immunohistochemistry (Formalin/PFA-fixed paraffin-embedded sections) - Anti-Cathepsin B antibody [EPR4323] (ab125067)

ab125067, at a 1/50 dilution, staining Cathepsin B in paraffin-embedded Human papillary carcinoma tissue by immunohistochemistry.

Perform heat mediated antigen retrieval with citrate buffer pH 6 before commencing with IHC staining protocol.

Why choose a recombinant antibody?



Research with confidence
Consistent and reproducible results



Long-term and scalable supply
Recombinant technology



Success from the first experiment
Confirmed specificity



Ethical standards compliant
Animal-free production

Anti-Cathepsin B antibody [EPR4323] (ab125067)

Please note: All products are "FOR RESEARCH USE ONLY. NOT FOR USE IN DIAGNOSTIC PROCEDURES"

Our Abpromise to you: Quality guaranteed and expert technical support

- Replacement or refund for products not performing as stated on the datasheet
- Valid for 12 months from date of delivery
- Response to your inquiry within 24 hours
- We provide support in Chinese, English, French, German, Japanese and Spanish
- Extensive multi-media technical resources to help you
- We investigate all quality concerns to ensure our products perform to the highest standards

If the product does not perform as described on this datasheet, we will offer a refund or replacement. For full details of the Abpromise, please visit <https://www.abcam.co.jp/abpromise> or contact our technical team.

Terms and conditions

- Guarantee only valid for products bought direct from Abcam or one of our authorized distributors