

### Anti-Cathepsin B antibody [EPR21033] ab214428

リコンビナント **RabMAb**

★★★★★ **5 Abreviews** **11 References** 画像数 7

#### 製品の概要

製品名	Anti-Cathepsin B antibody [EPR21033]
製品の詳細	Rabbit monoclonal [EPR21033] to Cathepsin B
由来種	Rabbit
アプリケーション	<b>適用あり:</b> Flow Cyt (Intra), IHC-P, WB, ICC/IF
種交差性	<b>交差種:</b> Mouse, Rat
免疫原	Recombinant fragment. This information is proprietary to Abcam and/or its suppliers.
ポジティブ・コントロール	WB: Mouse kidney tissue lysate; Rat thymus and kidney tissue lysates; RAW 264.7 and PC-12 whole cell lysates. IHC-P: Mouse and rat kidney tissues. ICC/IF: RAW 264.7 and PC-12 cells. Flow Cyt (intra): RAW 264.7 cells.
特記事項	<p>This product is a recombinant monoclonal antibody, which offers several advantages including:</p> <ul style="list-style-type: none"> <li>- High batch-to-batch consistency and reproducibility</li> <li>- Improved sensitivity and specificity</li> <li>- Long-term security of supply</li> <li>- Animal-free production</li> </ul> <p>For more information <a href="#">see here</a>.</p> <p>Our RabMAb<sup>®</sup> technology is a patented hybridoma-based technology for making rabbit monoclonal antibodies. For details on our patents, please refer to <a href="#">RabMAb<sup>®</sup> patents</a>.</p>

#### 製品の特性

製品の状態	Liquid
保存方法	Shipped at 4°C. Store at +4°C short term (1-2 weeks). Upon delivery aliquot. Store at -20°C long term. Avoid freeze / thaw cycle.
バッファー	<p>pH: 7.2</p> <p>Preservative: 0.01% Sodium azide</p> <p>Constituents: PBS, 40% Glycerol (glycerin, glycerine), 0.05% BSA</p>
精製度	Protein A purified
ポリ/モノ	モノクローナル
クローン名	EPR21033

アイソタイプIgG

アプリケーション

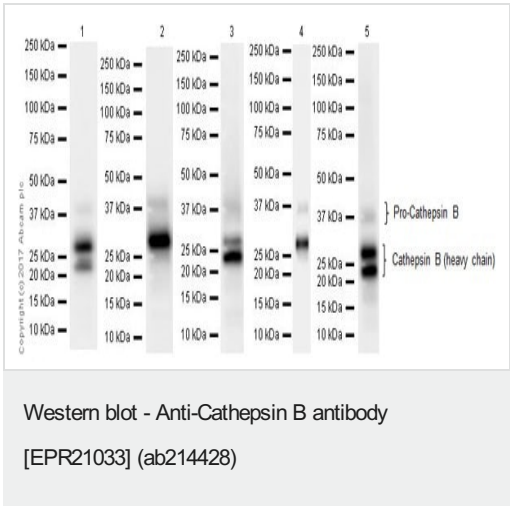
The Abpromise guarantee **Abpromise保証は、** 次のテスト済みアプリケーションにおけるab214428の使用に適用されます  
アプリケーションノートには、推奨の開始希釈率がありますが、適切な希釈率につきましてはご検討ください。

アプリケーション	Abreviews	特記事項
Flow Cyt (Intra)		1/500.
IHC-P	★★★★★ (2)	1/1000. Perform heat mediated antigen retrieval with Tris/EDTA buffer pH 9.0 before commencing with IHC staining protocol.
WB	★★★★★ (2)	1/1000. Predicted molecular weight: 37 kDa.
ICC/IF	★★★★★ (1)	1/250.

ターゲット情報

機能	Thiol protease which is believed to participate in intracellular degradation and turnover of proteins. Has also been implicated in tumor invasion and metastasis.
配列類似性	Belongs to the peptidase C1 family.
細胞内局在	Lysosome. Melanosome. Identified by mass spectrometry in melanosome fractions from stage I to stage IV.

画像



**All lanes :** Anti-Cathepsin B antibody [EPR21033] (ab214428) at 1/1000 dilution

- Lane 1 :** Mouse kidney tissue lysate
- Lane 2 :** RAW 264.7 (mouse macrophage cell line transformed with Abelson murine leukemia virus) whole cell lysate
- Lane 3 :** Rat thymus tissue lysate
- Lane 4 :** Rat kidney tissue lysate
- Lane 5 :** PC-12 (rat adrenal gland pheochromocytoma cell line) whole cell lysate

Lysates/proteins at 10 µg per lane.

**Secondary**  
**All lanes :** Goat Anti-Rabbit IgG H&L (HRP) (**ab97051**) at 1/100000 dilution

Developed using the ECL technique.

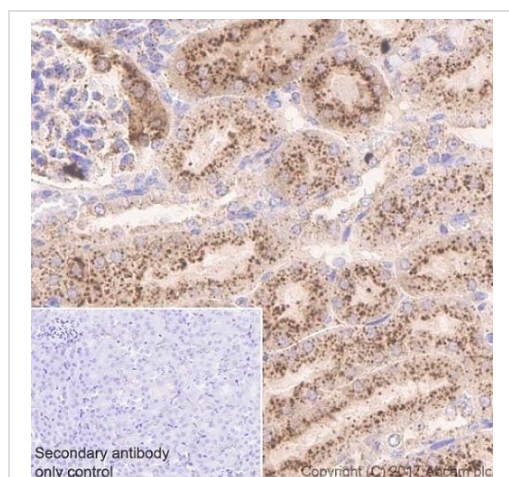
**Predicted band size:** 37 kDa

**Observed band size:** 25,31,43 kDa

**Exposure times:** Lanes 1,2: 23 seconds; Lane 3: 50 seconds;  
Lane 4: 15 seconds; Lane 5: 2 minutes.

Blocking/Dilution buffer: 5% NFDM/TBST.

The expression profile and molecular mass is consistent with what has been described in the literature (PMID:20536394; PMID: 10447678).

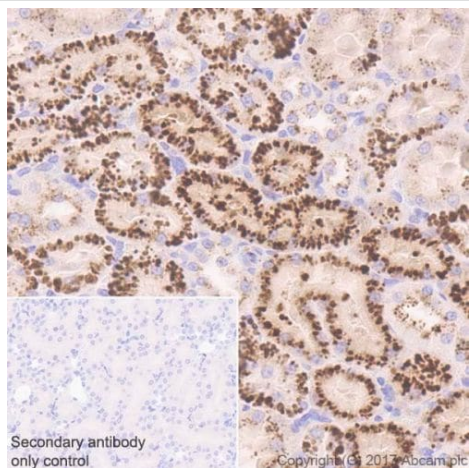


Immunohistochemical analysis of paraffin-embedded mouse kidney tissue labeling Cathepsin B with ab214428 at 1/1000 dilution, followed by secondary Goat Anti-Rabbit IgG H&L (HRP) Ready to use. Punctate cytoplasmic staining on mouse kidney (PMID: 20668705; PMID: 26831567) is observed. Counter stained with hematoxylin.

Secondary antibody only control: Used PBS instead of primary antibody, secondary antibody is Goat Anti-Rabbit IgG H&L (HRP) Ready to use.

Perform heat mediated antigen retrieval with Tris/EDTA buffer pH 9.0 before commencing with IHC staining protocol.

Immunohistochemistry (Formalin/PFA-fixed paraffin-embedded sections) - Anti-Cathepsin B antibody [EPR21033] (ab214428)

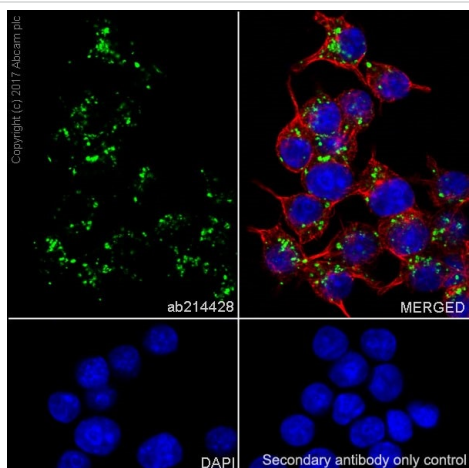


Immunohistochemistry (Formalin/PFA-fixed paraffin-embedded sections) - Anti-Cathepsin B antibody [EPR21033] (ab214428)

Immunohistochemical analysis of paraffin-embedded rat kidney tissue labeling Cathepsin B with ab214428 at 1/1000 dilution, followed by secondary Goat Anti-Rabbit IgG H&L (HRP) Ready to use. Punctate cytoplasmic staining on rat kidney (PMID: 20668705; PMID: 26831567) is observed. Counter stained with hematoxylin.

Secondary antibody only control: Used PBS instead of primary antibody, secondary antibody is Goat Anti-Rabbit IgG H&L (HRP) Ready to use.

Perform heat mediated antigen retrieval with Tris/EDTA buffer pH 9.0 before commencing with IHC staining protocol.

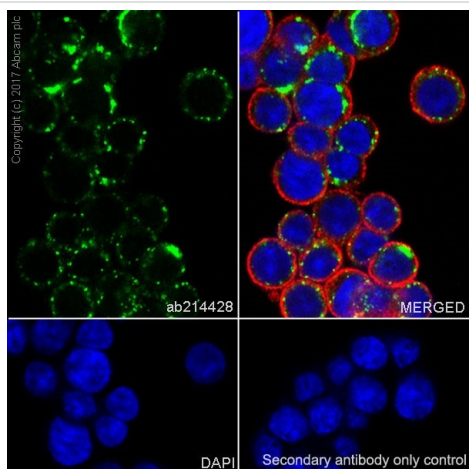


Immunocytochemistry/ Immunofluorescence - Anti-Cathepsin B antibody [EPR21033] (ab214428)

Immunofluorescent analysis of 100% methanol-fixed RAW 264.7 (mouse macrophage cell line transformed with Abelson murine leukemia virus) cells labeling Cathepsin B with ab214428 at 1/250 dilution, followed by Goat Anti-Rabbit IgG H&L (Alexa Fluor<sup>®</sup> 488) (**ab150077**) secondary antibody at 1/1000 dilution (green). Confocal image showing cytoplasmic staining in RAW 264.7 cells.

The nuclear counterstain is DAPI (blue). Tubulin is detected with Anti-alpha Tubulin antibody [DM1A] - Microtubule Marker (Alexa Fluor<sup>®</sup> 594) (**ab195889**) at 1/200 dilution (red).

Secondary antibody only control: Used PBS instead of primary antibody, followed by Goat Anti-Rabbit IgG H&L (Alexa Fluor<sup>®</sup> 488) (**ab150077**) secondary antibody at 1/1000 dilution.

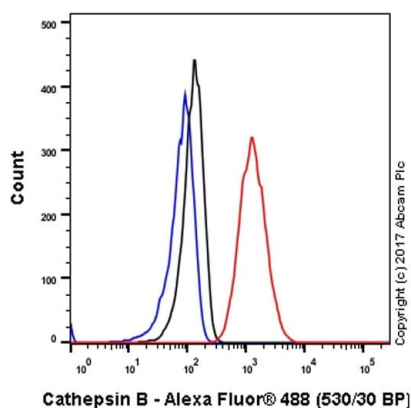


Immunocytochemistry/ Immunofluorescence - Anti-Cathepsin B antibody [EPR21033] (ab214428)

Immunofluorescent analysis of 100% methanol-fixed PC-12 (rat adrenal gland pheochromocytoma cell line) cells labeling Cathepsin B with ab214428 at 1/250 dilution, followed by Goat Anti-Rabbit IgG H&L (Alexa Fluor<sup>®</sup> 488) (**ab150077**) secondary antibody at 1/1000 dilution (green). Confocal image showing cytoplasmic staining on PC-12 cells.

The nuclear counterstain is DAPI (blue). Tubulin is detected with Anti-alpha Tubulin antibody [DM1A] - Microtubule Marker (Alexa Fluor<sup>®</sup> 594) (**ab195889**) at 1/200 dilution (red).

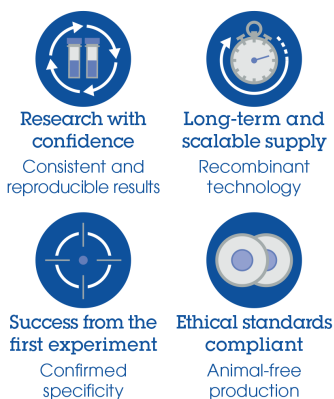
Secondary antibody only control: Used PBS instead of primary antibody, followed by Goat Anti-Rabbit IgG H&L (Alexa Fluor<sup>®</sup> 488) (**ab150077**) secondary antibody at 1/1000 dilution.



Flow Cytometry (Intracellular) - Anti-Cathepsin B antibody [EPR21033] (ab214428)

Intracellular flow cytometric analysis of 4% paraformaldehyde-fixed, 90% methanol-permeabilized RAW 264.7 (mouse macrophage cell line transformed with Abelson murine leukemia virus) cell line labeling Cathepsin B with ab214428 at 1/500 dilution (red) compared with a Rabbit IgG, monoclonal [EPR25A] - Isotype Control (**ab172730**) (black) and an unlabeled control (cells without incubation with primary antibody and secondary antibody) (blue). Goat Anti-Rabbit IgG H&L (Alexa Fluor® 488) (**ab150077**), at 1/2000 dilution was used as the secondary antibody.

#### Why choose a recombinant antibody?



Anti-Cathepsin B antibody [EPR21033] (ab214428)

**Please note:** All products are "FOR RESEARCH USE ONLY. NOT FOR USE IN DIAGNOSTIC PROCEDURES"

#### Our Abpromise to you: Quality guaranteed and expert technical support

- Replacement or refund for products not performing as stated on the datasheet
- Valid for 12 months from date of delivery
- Response to your inquiry within 24 hours
- We provide support in Chinese, English, French, German, Japanese and Spanish
- Extensive multi-media technical resources to help you
- We investigate all quality concerns to ensure our products perform to the highest standards

If the product does not perform as described on this datasheet, we will offer a refund or replacement. For full details of the Abpromise, please visit <https://www.abcam.co.jp/abpromise> or contact our technical team.

## Terms and conditions

---

- Guarantee only valid for products bought direct from Abcam or one of our authorized distributors