

Anti-Cathepsin B antibody [CA10] ab58802

★★★★★ [6 Abreviews](#) [84 References](#) [画像数 2](#)

製品の概要

製品名	Anti-Cathepsin B antibody [CA10]
製品の詳細	Mouse monoclonal [CA10] to Cathepsin B
由来種	Mouse
特異性	This antibody recognizes an epitope on the heavy chain of mature Cathepsin B and therefore detects both mature (~31 kDa) and pro (~43 kDa) Cathepsin B.
アプリケーション	適用あり: Flow Cyt, WB
種交差性	交差種: Human
免疫原	Cathepsin B purified from human liver
エピトープ	Within the heavy chain of mature cathepsin B
ポジティブ・コントロール	Flow cyt: HepG2 cells
特記事項	<p>This product has switched from ascites to TCS on 26th October 2020.</p> <p>The Life Science industry has been in the grips of a reproducibility crisis for a number of years. Abcam is leading the way in addressing this with our range of recombinant monoclonal antibodies and knockout edited cell lines for gold-standard validation. Please check that this product meets your needs before purchasing.</p> <p>If you have any questions, special requirements or concerns, please send us an inquiry and/or contact our Support team ahead of purchase. Recommended alternatives for this product can be found below, along with publications, customer reviews and Q&As</p>

製品の特性

製品の状態	Liquid
保存方法	Shipped at 4°C. Store at +4°C short term (1-2 weeks). Upon delivery aliquot. Store at -20°C long term.
バッファー	Constituents: 0.158% Ammonium bicarbonate, 0.1% BSA
精製度	Protein G purified
ポリ/モノ	モノクローナル
クローン名	CA10
アイソタイプ	IgG2a

アプリケーション

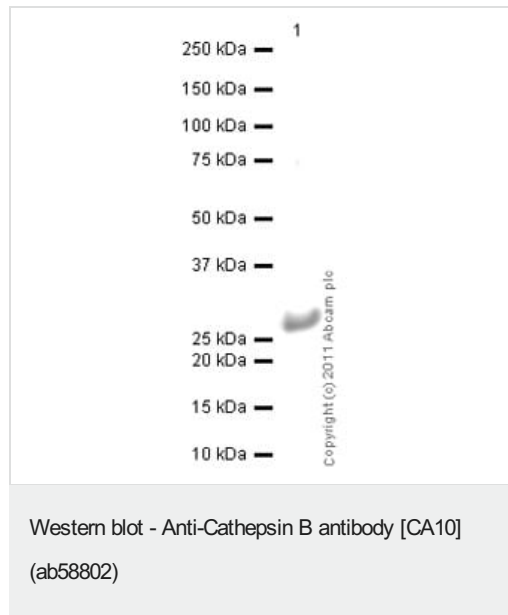
The Abpromise guarantee Abpromise保証は、次のテスト済みアプリケーションにおけるab58802の使用に適用されます
アプリケーションノートには、推奨の開始希釈率がありますが、適切な希釈率につきましてはご検討ください。

アプリケーション	Abreviews	特記事項
Flow Cyt		Use 0.5µg for 10 ⁶ cells. ab170191 - Mouse monoclonal IgG2a, is suitable for use as an isotype control with this antibody.
WB	★★★★★ (4)	Use a concentration of 0.25 µg/ml. Predicted molecular weight: 38 kDa.

ターゲット情報

機能	Thiol protease which is believed to participate in intracellular degradation and turnover of proteins. Has also been implicated in tumor invasion and metastasis.
配列類似性	Belongs to the peptidase C1 family.
細胞内局在	Lysosome. Melanosome. Identified by mass spectrometry in melanosome fractions from stage I to stage IV.

画像



Anti-Cathepsin B antibody [CA10] (ab58802) at 0.25 µg/ml + Native human Cathepsin B protein (**ab90387**) at 0.01 µg

Secondary

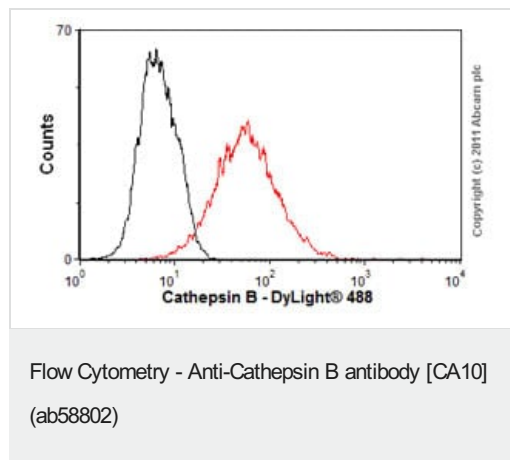
Goat Anti-Mouse IgG H&L (HRP) preadsorbed (**ab97040**) at 1/5000 dilution

Developed using the ECL technique.

Performed under reducing conditions.

Predicted band size: 38 kDa

Exposure time: 10 seconds



Overlay histogram showing HepG2 cells stained with ab58802 (red line). The cells were fixed with 4% paraformaldehyde (10 min) and then permeabilized with 0.1% PBS-Tween for 20 min. The cells were then incubated in 1x PBS / 10% normal goat serum / 0.3M glycine to block non-specific protein-protein interactions followed by the antibody (ab58802, 0.5µg/1x10⁶ cells) for 30 min at 22°C. The secondary antibody used was DyLight® 488 goat anti-mouse IgG (H+L) (**ab96879**) at 1/500 dilution for 30 min at 22°C. Isotype control antibody (black line) was mouse IgG2a [ICIGG2A] (**ab91361**, 1µg/1x10⁶ cells) used under the same conditions.

Acquisition of >5,000 events was performed. This antibody gave a positive signal in HepG2 cells fixed with 80% methanol (5 min)/permeabilized with 0.1% PBS-Tween for 20 min used under the same conditions.

Please note: All products are "FOR RESEARCH USE ONLY. NOT FOR USE IN DIAGNOSTIC PROCEDURES"

Our Abpromise to you: Quality guaranteed and expert technical support

- Replacement or refund for products not performing as stated on the datasheet
- Valid for 12 months from date of delivery
- Response to your inquiry within 24 hours
- We provide support in Chinese, English, French, German, Japanese and Spanish
- Extensive multi-media technical resources to help you
- We investigate all quality concerns to ensure our products perform to the highest standards

If the product does not perform as described on this datasheet, we will offer a refund or replacement. For full details of the Abpromise, please visit <https://www.abcam.co.jp/abpromise> or contact our technical team.

Terms and conditions

- Guarantee only valid for products bought direct from Abcam or one of our authorized distributors