

### Anti-Cathelicidin/CLP antibody ab69484

★★★★★ [2 Abreviews](#) [9 References](#) [画像数 3](#)

#### 製品の概要

---

製品名	Anti-Cathelicidin/CLP antibody
製品の詳細	Rabbit polyclonal to Cathelicidin/CLP
由来種	Rabbit
特異性	There is 71% homology between the immunogen and mouse cathelicidin/CLP. This antibody has been published (see PubMed: 21724991) with mouse samples, but we were unable to see an appropriately sized band in mouse spleen or small intestine by WB. It may be that certain lots have worked with mouse, but we are unable to guarantee cross-reactivity with mouse after our testing.
アプリケーション	<b>適用あり:</b> ICC/IF, IHC-P, WB
種交差性	<b>交差種:</b> Human
免疫原	Synthetic peptide within Human Cathelicidin/CLP aa 50-100 (internal sequence). The exact sequence is proprietary. Database link: <a href="#">P49913</a>
ポジティブ・コントロール	Human spleen tissue lysate.
特記事項	<p>The Life Science industry has been in the grips of a reproducibility crisis for a number of years. Abcam is leading the way in addressing this with our range of recombinant monoclonal antibodies and knockout edited cell lines for gold-standard validation. Please check that this product meets your needs before purchasing.</p> <p>If you have any questions, special requirements or concerns, please send us an inquiry and/or contact our Support team ahead of purchase. Recommended alternatives for this product can be found below, along with publications, customer reviews and Q&amp;As</p>

#### 製品の特性

---

製品の状態	Liquid
保存方法	Shipped at 4°C. Store at +4°C short term (1-2 weeks). Upon delivery aliquot. Store at -20°C. Avoid freeze / thaw cycle. Stable for 12 months at -20°C.
バッファー	pH: 7.2 Preservative: 0.02% Sodium azide Constituent: PBS
精製度	Immunogen affinity purified

ポリモノ  
アイソタイプ

ポリクローナル  
IgG

## アプリケーション

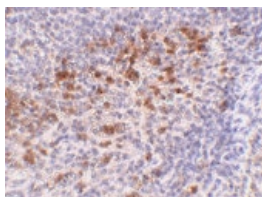
**The Abpromise guarantee** **Abpromise保証は、** 次のテスト済みアプリケーションにおけるab69484の使用に適用されます  
アプリケーションノートには、推奨の開始希釈率がありますが、適切な希釈率につきましてはご確認ください。

アプリケーション	Abreviews	特記事項
ICC/IF		Use a concentration of 20 µg/ml.
IHC-P		Use a concentration of 5 µg/ml.
WB	★☆☆☆☆ (2)	Use a concentration of 1 µg/ml. Detects a band of approximately 19 kDa (predicted molecular weight: 19 kDa).

## ターゲット情報

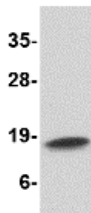
機能	Binds to bacterial lipopolysaccharides (LPS), has antibacterial activity.
組織特異性	Expressed in bone marrow and testis and neutrophils.
配列類似性	Belongs to the cathelicidin family.
翻訳後修飾	The N-terminus is blocked.
細胞内局在	Secreted.

## 画像



ab69484 at 5 µg/ml staining Cathelicidin/CLP in human spleen tissue by Immunohistochemistry (Formalin/PFA-fixed paraffin-embedded sections).

Immunohistochemistry (Formalin/PFA-fixed paraffin-embedded sections) - Anti-Cathelicidin/CLP antibody (ab69484)



Western blot - Anti-Cathelicidin/CLP antibody (ab69484)

Anti-Cathelicidin/CLP antibody (ab69484) at 1 µg/ml + Human spleen tissue lysate at 15 µg

**Predicted band size:** 19 kDa

**Observed band size:** 19 kDa

Immunocytochemistry/ Immunofluorescence - Anti-Cathelicidin/CLP antibody (ab69484)

Immunofluorescence of Cathelicidin/CLP in Human Spleen cells using ab69484 at 20 µg/ml.

**Please note:** All products are "FOR RESEARCH USE ONLY. NOT FOR USE IN DIAGNOSTIC PROCEDURES"

### Our Abpromise to you: Quality guaranteed and expert technical support

---

- Replacement or refund for products not performing as stated on the datasheet
- Valid for 12 months from date of delivery
- Response to your inquiry within 24 hours
- We provide support in Chinese, English, French, German, Japanese and Spanish
- Extensive multi-media technical resources to help you
- We investigate all quality concerns to ensure our products perform to the highest standards

If the product does not perform as described on this datasheet, we will offer a refund or replacement. For full details of the Abpromise, please visit <https://www.abcam.co.jp/abpromise> or contact our technical team.

### Terms and conditions

---

- Guarantee only valid for products bought direct from Abcam or one of our authorized distributors