

Anti-CAST antibody ab92428

画像数 2

製品の概要

製品名	Anti-CAST antibody
製品の詳細	Rabbit polyclonal to CAST
由来種	Rabbit
アプリケーション	適用あり: ICC/IF, IHC-P
種交差性	交差種: Human 交差が予測される動物種: Chimpanzee, Gorilla 
免疫原	Synthetic peptide corresponding to Human CAST aa 400-500. Database link: O15446
特記事項	<p>The Life Science industry has been in the grips of a reproducibility crisis for a number of years. Abcam is leading the way in addressing this with our range of recombinant monoclonal antibodies and knockout edited cell lines for gold-standard validation. Please check that this product meets your needs before purchasing.</p> <p>If you have any questions, special requirements or concerns, please send us an inquiry and/or contact our Support team ahead of purchase. Recommended alternatives for this product can be found below, along with publications, customer reviews and Q&As</p>

製品の特性

製品の状態	Liquid
保存方法	Shipped at 4°C. Upon delivery aliquot and store at -20°C. Avoid freeze / thaw cycles.
バッファー	pH: 6.8 Preservative: 0.09% Sodium azide Constituents: Tris buffered saline, 0.1% BSA
精製度	Immunogen affinity purified
ポリ/モノ	ポリクローナル
アイソタイプ	IgG

アプリケーション

The Abpromise guarantee

Abpromise保証は、 次のテスト済みアプリケーションにおけるab92428の使用に適用されます

アプリケーションノートには、推奨の開始希釈率がありますが、適切な希釈率につきましてはご確認ください。

アプリケーション	Abreviews	特記事項
ICC/IF		
IHC-P		

追加情報

ICC/IF: Use at an assay dependent dilution.

IHC-P: 1/100 - 1/1500.

Not yet tested in other applications.

Optimal dilutions/concentrations should be determined by the end user.

ターゲット情報

機能

DNA-dependent RNA polymerase catalyzes the transcription of DNA into RNA using the four ribonucleoside triphosphates as substrates. Component of RNA polymerase I which synthesizes ribosomal RNA precursors. Isoform 1 is involved in UBTF-activated transcription, presumably at a step following PIC formation.

Isoform 2 has been described as a component of preformed T-cell receptor (TCR) complex.

配列類似性

Belongs to the eukaryotic RPA34 RNA polymerase subunit family.

翻訳後修飾

Isoform 2 undergoes tyrosine phosphorylation upon T-cell receptor (TCR) stimulation. This phosphorylation has not been confirmed by other group.

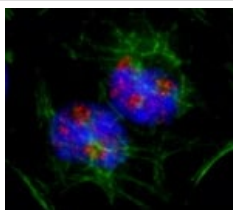
Isoform 1 is phosphorylated on tyrosine residues in initiation-competent Pol I-beta complexes but not in Pol I-alpha complexes.

Phosphorylated upon DNA damage, probably by ATM or ATR.

細胞内局在

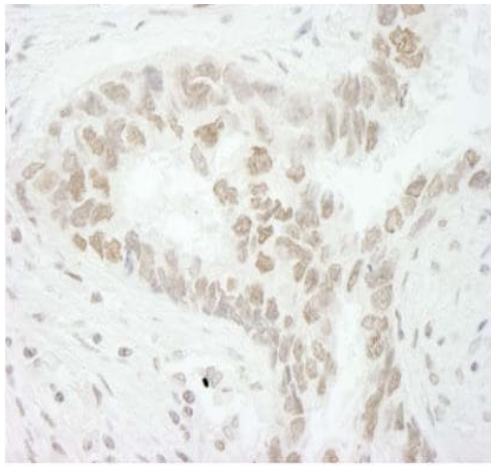
Nucleus > nucleolus. Chromosome. Found at the fibrillar centers of the nucleolus in interphase and during cell division it is localized to the nucleolus organizer regions of the chromosomes.

画像



Formaldehyde fixed asynchronous HeLa cells detected with ab92428 at 1/250 dilution

Immunocytochemistry/ Immunofluorescence - Anti-CAST antibody (ab92428)



Detection of human PAF49 by immunohistochemistry. *Sample:* FFPE section of human lung carcinoma. *Antibody:* Affinity purified rabbit anti-PAF49 used at 1/1,250 dilution. *Detection:* DAB

Immunohistochemistry (Formalin/PFA-fixed paraffin-embedded sections) - Anti-CAST antibody (ab92428)

Please note: All products are "FOR RESEARCH USE ONLY. NOT FOR USE IN DIAGNOSTIC PROCEDURES"

Our Abpromise to you: Quality guaranteed and expert technical support

- Replacement or refund for products not performing as stated on the datasheet
- Valid for 12 months from date of delivery
- Response to your inquiry within 24 hours
- We provide support in Chinese, English, French, German, Japanese and Spanish
- Extensive multi-media technical resources to help you
- We investigate all quality concerns to ensure our products perform to the highest standards

If the product does not perform as described on this datasheet, we will offer a refund or replacement. For full details of the Abpromise, please visit <https://www.abcam.co.jp/abpromise> or contact our technical team.

Terms and conditions

- Guarantee only valid for products bought direct from Abcam or one of our authorized distributors