

Anti-Caspase-7 antibody ab25900

★★★★★ [1 Abreviews](#) [8 References](#) [画像数 2](#)

製品の概要

製品名	Anti-Caspase-7 antibody
製品の詳細	Rabbit polyclonal to Caspase-7
由来種	Rabbit
アプリケーション	適用あり: IHC-P, WB
種交差性	交差種: Human
免疫原	Synthetic peptide corresponding to Human Caspase-7 aa 1-16 (C terminal). Database link: P55210
ポジティブ・コントロール	Jurkat cell lysate, human skeletal muscle cell
特記事項	<p>The Life Science industry has been in the grips of a reproducibility crisis for a number of years. Abcam is leading the way in addressing this with our range of recombinant monoclonal antibodies and knockout edited cell lines for gold-standard validation. Please check that this product meets your needs before purchasing.</p> <p>If you have any questions, special requirements or concerns, please send us an inquiry and/or contact our Support team ahead of purchase. Recommended alternatives for this product can be found below, along with publications, customer reviews and Q&As</p>

製品の特性

製品の状態	Liquid
保存方法	Shipped at 4°C. Store at +4°C short term (1-2 weeks). Upon delivery aliquot. Store at -20°C. Avoid freeze / thaw cycle.
バッファー	pH: 7.2 Preservative: 0.02% Sodium azide Constituent: PBS
精製度	Immunogen affinity purified
ポリ/モノ	ポリクローナル
アイソタイプ	IgG

アプリケーション

The Abpromise guarantee

Abpromise保証は、次のテスト済みアプリケーションにおけるab25900の使用に適用されます

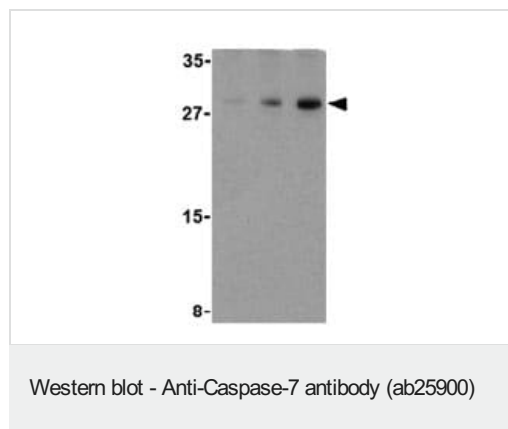
アプリケーションノートには、推奨の開始希釈率がありますが、適切な希釈率につきましてはご検討ください。

アプリケーション	Abreviews	特記事項
IHC-P		Use a concentration of 2 µg/ml.
WB	★★★★★ (1)	Use a concentration of 0.5 µg/ml. Detects a band of approximately 30 kDa (predicted molecular weight: 34 kDa).

ターゲット情報

機能	Involved in the activation cascade of caspases responsible for apoptosis execution. Cleaves and activates sterol regulatory element binding proteins (SREBPs). Proteolytically cleaves poly(ADP-ribose) polymerase (PARP) at a '216-Asp-Gly-217' bond. Overexpression promotes programmed cell death.
組織特異性	Highly expressed in lung, skeletal muscle, liver, kidney, spleen and heart, and moderately in testis. No expression in the brain.
配列類似性	Belongs to the peptidase C14A family.
翻訳後修飾	Cleavages by granzyme B or caspase-10 generate the two active subunits. Propeptide domains can also be cleaved efficiently by caspase-3. Active heterodimers between the small subunit of caspase-7 and the large subunit of caspase-3, and vice versa, also occur.
細胞内局在	Cytoplasm.

画像



Lane 1 : Anti-Caspase-7 antibody (ab25900) at 0.5 µg/ml

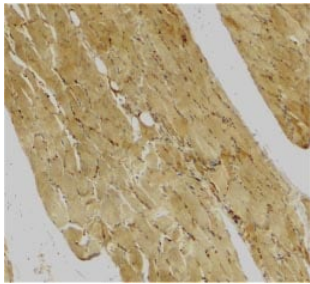
Lane 2 : Anti-Caspase-7 antibody (ab25900) at 1 µg/ml

Lane 3 : Anti-Caspase-7 antibody (ab25900) at 2 µg/ml

All lanes : Human skeletal muscle cell lysate

Predicted band size: 34 kDa

Observed band size: 30 kDa



Immunohistochemical staining of human skeletal muscle (paraffin embedded sections) using ab25900 anti Caspase-7 at 2 µg/ml.

Immunohistochemistry (Formalin/PFA-fixed paraffin-embedded sections) - Anti-Caspase-7 antibody (ab25900)

Please note: All products are "FOR RESEARCH USE ONLY. NOT FOR USE IN DIAGNOSTIC PROCEDURES"

Our Abpromise to you: Quality guaranteed and expert technical support

- Replacement or refund for products not performing as stated on the datasheet
- Valid for 12 months from date of delivery
- Response to your inquiry within 24 hours
- We provide support in Chinese, English, French, German, Japanese and Spanish
- Extensive multi-media technical resources to help you
- We investigate all quality concerns to ensure our products perform to the highest standards

If the product does not perform as described on this datasheet, we will offer a refund or replacement. For full details of the Abpromise, please visit <https://www.abcam.co.jp/abpromise> or contact our technical team.

Terms and conditions

- Guarantee only valid for products bought direct from Abcam or one of our authorized distributors