

Anti-Caspase-5 antibody ab69641

画像数 1

製品の概要

| | |
|--------------|---|
| 製品名 | Anti-Caspase-5 antibody |
| 製品の詳細 | Rabbit polyclonal to Caspase-5 |
| 由来種 | Rabbit |
| 特異性 | ab69641 can detect a fragment of activated Caspase 5 resulting from cleavage adjacent to Asp121. |
| アプリケーション | 適用あり: WB |
| 種交差性 | 交差種: Human |
| 免疫原 | Synthetic peptide corresponding to Human Caspase-5. |
| ポジティブ・コントロール | Extracts from HeLa cells and A549 cells, treated with etoposide (25uM, 24hours). |
| 特記事項 | <p>The Life Science industry has been in the grips of a reproducibility crisis for a number of years. Abcam is leading the way in addressing this with our range of recombinant monoclonal antibodies and knockout edited cell lines for gold-standard validation. Please check that this product meets your needs before purchasing.</p> <p>If you have any questions, special requirements or concerns, please send us an inquiry and/or contact our Support team ahead of purchase. Recommended alternatives for this product can be found below, along with publications, customer reviews and Q&As</p> |

製品の特性

| | |
|--------|---|
| 製品の状態 | Liquid |
| 保存方法 | Shipped at 4°C. Store at -20°C. Stable for 12 months at -20°C. |
| バッファー | <p>pH: 7.40</p> <p>Preservative: 0.02% Sodium azide</p> <p>Constituents: 0.87% Sodium chloride, 50% Glycerol (glycerin, glycerine), PBS</p> |
| 精製度 | Without Mg ²⁺ and Ca ²⁺ |
| ポリ/モノ | Immunogen affinity purified |
| アイソタイプ | ポリクローナル |
| | IgG |

アプリケーション

The Abpromise guarantee **Abpromise保証は、** 次のテスト済みアプリケーションにおけるab69641の使用に適用されます
アプリケーションノートには、推奨の開始希釈率がありますが、適切な希釈率につきましてはご検討ください。

| アプリケーション | Abreviews | 特記事項 |
|----------|-----------|------|
| WB | | |

追加情報

ELISA: 1/20000.
WB: 1/500 - 1/1000. Detects a band of approximately 26 and 48 kDa (predicted molecular weight of precursor): 48 kDa).

Not yet tested in other applications.
Optimal dilutions/concentrations should be determined by the end user.

ターゲット情報

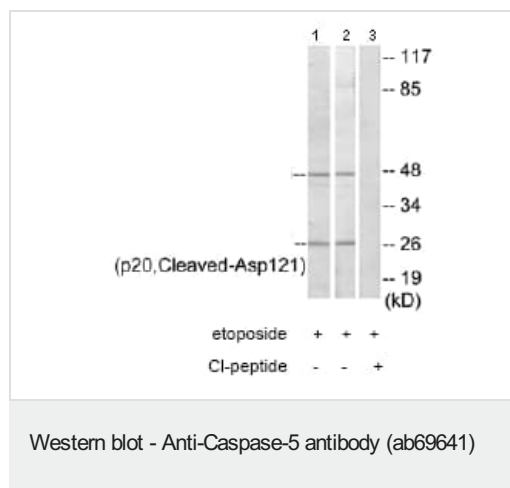
機能 Mediator of programmed cell death (apoptosis).

組織特異性 Expressed in barely detectable amounts in most tissues except brain, highest levels being found in lung, liver and skeletal muscle.

配列類似性 Belongs to the peptidase C14A family.
Contains 1 CARD domain.

翻訳後修飾 The two subunits are derived from the precursor sequence by an autocatalytic mechanism.

画像



All lanes : Anti-Caspase-5 antibody (ab69641) at 1/500 dilution

Lane 1 : HeLa cells treated with etoposide (25uM, 24hours)

Lane 2 :

A549 cells treated with etoposide (25uM, 24hours)

Lane 3 : HeLa cells treated with etoposide (25uM, 24hours) with immunising peptide at 10 µg

Lysates/proteins at 30 µg per lane.

Predicted band size: 48 kDa

Observed band size: 26,48 kDa

Additional bands at: 26 kDa (possible cleavage fragment)

Please note: All products are "FOR RESEARCH USE ONLY. NOT FOR USE IN DIAGNOSTIC PROCEDURES"

Our Abpromise to you: Quality guaranteed and expert technical support

- Replacement or refund for products not performing as stated on the datasheet
- Valid for 12 months from date of delivery
- Response to your inquiry within 24 hours

- We provide support in Chinese, English, French, German, Japanese and Spanish
- Extensive multi-media technical resources to help you
- We investigate all quality concerns to ensure our products perform to the highest standards

If the product does not perform as described on this datasheet, we will offer a refund or replacement. For full details of the Abpromise, please visit <https://www.abcam.co.jp/abpromise> or contact our technical team.

Terms and conditions

- Guarantee only valid for products bought direct from Abcam or one of our authorized distributors