

Anti-Caspase-4 antibody ab25898

8 References [画像数 2](#)

製品の概要

製品名	Anti-Caspase-4 antibody
製品の詳細	Rabbit polyclonal to Caspase-4
由来種	Rabbit
アプリケーション	適用あり: WB, IHC-P
種交差性	交差種: Mouse, Human
免疫原	Synthetic peptide corresponding to Human Caspase-4 aa 20-70 (N terminal).
ポジティブ・コントロール	WB: Ramos cell lysate IHC-P: Mouse spleen
特記事項	<p>The Life Science industry has been in the grips of a reproducibility crisis for a number of years. Abcam is leading the way in addressing this with our range of recombinant monoclonal antibodies and knockout edited cell lines for gold-standard validation. Please check that this product meets your needs before purchasing.</p> <p>If you have any questions, special requirements or concerns, please send us an inquiry and/or contact our Support team ahead of purchase. Recommended alternatives for this product can be found below, along with publications, customer reviews and Q&As</p>

製品の特性

製品の状態	Liquid
保存方法	Shipped at 4°C. Store at +4°C.
バッファー	pH: 7.2 Preservative: 0.02% Sodium azide Constituent: PBS
精製度	Immunogen affinity purified
ポリ/モノ	ポリクローナル
アイソタイプ	IgG

アプリケーション

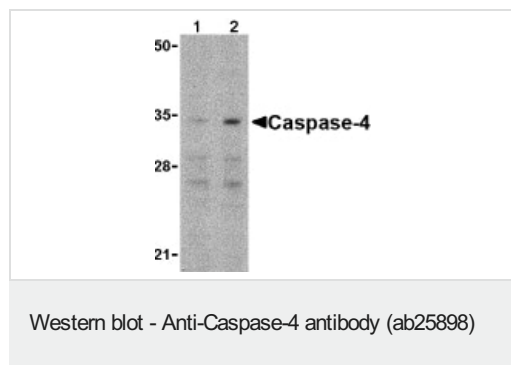
The Abpromise guarantee **Abpromise保証は、次のテスト済みアプリケーションにおけるab25898の使用に適用されます**
 アプリケーションノートには、推奨の開始希釈率がありますが、適切な希釈率につきましてはご検討ください。

アプリケーション	Abreviews	特記事項
WB		Use a concentration of 1 µg/ml. Detects a band of approximately 34 kDa (predicted molecular weight: 31 kDa).
IHC-P		Use a concentration of 2 µg/ml.

ターゲット情報

機能	Involved in the activation cascade of caspases responsible for apoptosis execution. Cleaves caspase-1.
組織特異性	Widely expressed, with highest levels in spleen and lung. Moderate expression in heart and liver, low expression in skeletal muscle, kidney and testis. Not found in the brain.
配列類似性	Belongs to the peptidase C14A family. Contains 1 CARD domain.
翻訳後修飾	The two subunits are derived from the precursor sequence by an autocatalytic mechanism or by cleavage by Caspase-8.

画像



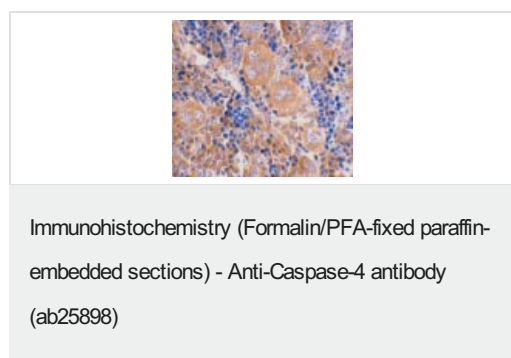
Lane 1 : Anti-Caspase-4 antibody (ab25898) at 0.5 µg/ml

Lane 2 : Anti-Caspase-4 antibody (ab25898) at 1 µg/ml

All lanes : Ramos cell lysate

Predicted band size: 31 kDa

Observed band size: ~34 kDa



ab25898 Immunohistochemical staining Caspase-4 of mouse spleen using 2 µg/ml (paraffin embedded sections).

Please note: All products are "FOR RESEARCH USE ONLY. NOT FOR USE IN DIAGNOSTIC PROCEDURES"

Our Abpromise to you: Quality guaranteed and expert technical support

- Replacement or refund for products not performing as stated on the datasheet
- Valid for 12 months from date of delivery
- Response to your inquiry within 24 hours
- We provide support in Chinese, English, French, German, Japanese and Spanish
- Extensive multi-media technical resources to help you
- We investigate all quality concerns to ensure our products perform to the highest standards

If the product does not perform as described on this datasheet, we will offer a refund or replacement. For full details of the Abpromise, please visit <https://www.abcam.co.jp/abpromise> or contact our technical team.

Terms and conditions

- Guarantee only valid for products bought direct from Abcam or one of our authorized distributors