

Anti-Caspase-3 antibody [31A1067] ab13585

KO 評価済

★★★★★ [2 Abreviews](#) [101 References](#) [画像数 4](#)

製品の概要

製品名	Anti-Caspase-3 antibody [31A1067]
製品の詳細	Mouse monoclonal [31A1067] to Caspase-3
由来種	Mouse
特異性	ab13585 recognizes an active form of Caspase 3 after apoptosis has been induced in wildtype cells and not Caspase 3 knockout cells
アプリケーション	適用あり: WB
種交差性	交差種: Mouse, Rat, Human
免疫原	Recombinant full length protein corresponding to Human Caspase-3 aa 1-277. Database link: P42574
ポジティブ・コントロール	Staurosporine-treated HeLa or Jurkat cell lysate.
特記事項	<p>The Life Science industry has been in the grips of a reproducibility crisis for a number of years. Abcam is leading the way in addressing this with our range of recombinant monoclonal antibodies and knockout edited cell lines for gold-standard validation. Please check that this product meets your needs before purchasing.</p> <p>If you have any questions, special requirements or concerns, please send us an inquiry and/or contact our Support team ahead of purchase. Recommended alternatives for this product can be found below, along with publications, customer reviews and Q&As</p>

製品の特性

製品の状態	Liquid
保存方法	Shipped at 4°C. Store at +4°C short term (1-2 weeks). Upon delivery aliquot. Store at -20°C or -80°C. Avoid freeze / thaw cycle.
バッファー	pH: 7.4 Preservative: 0.05% Sodium azide Constituents: 99% PBS, 0.05% BSA
精製度	Protein G purified
ポリ/モノ	モノクローナル
クローン名	31A1067

アイソタイプ	IgG1
軽鎖の種類	kappa

アプリケーション

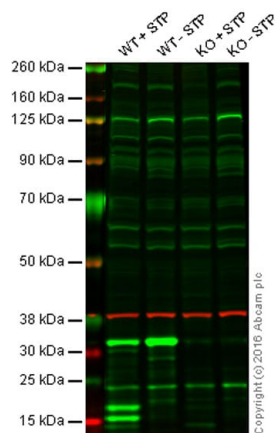
The Abpromise guarantee **Abpromise保証は、** 次のテスト済みアプリケーションにおけるab13585の使用に適用されます
アプリケーションノートには、推奨の開始希釈率がありますが、適切な希釈率につきましてはご確認ください。

アプリケーション	Abreviews	特記事項
WB		Use a concentration of 1 - 5 µg/ml. Predicted molecular weight: 31 kDa. The antibody detects both pro Caspase 3 (~32 kDa) and the large subunit of the active/cleaved form (~14-21 kDa) of Caspase 3. The large subunit of the cleaved form may appear as one or two or even as a stack of bands depending on the presence or absence of the Caspase 3 pro-domain.

ターゲット情報

機能	Involved in the activation cascade of caspases responsible for apoptosis execution. At the onset of apoptosis it proteolytically cleaves poly(ADP-ribose) polymerase (PARP) at a '216-Asp-Gly-217' bond. Cleaves and activates sterol regulatory element binding proteins (SREBPs) between the basic helix-loop-helix leucine zipper domain and the membrane attachment domain. Cleaves and activates caspase-6, -7 and -9. Involved in the cleavage of huntingtin.
組織特異性	Highly expressed in lung, spleen, heart, liver and kidney. Moderate levels in brain and skeletal muscle, and low in testis. Also found in many cell lines, highest expression in cells of the immune system.
配列類似性	Belongs to the peptidase C14A family.
翻訳後修飾	Cleavage by granzyme B, caspase-6, caspase-8 and caspase-10 generates the two active subunits. Additional processing of the propeptides is likely due to the autocatalytic activity of the activated protease. Active heterodimers between the small subunit of caspase-7 protease and the large subunit of caspase-3 also occur and vice versa. S-nitrosylated on its catalytic site cysteine in unstimulated human cell lines and denitrosylated upon activation of the Fas apoptotic pathway, associated with an increase in intracellular caspase activity. Fas therefore activates caspase-3 not only by inducing the cleavage of the caspase zymogen to its active subunits, but also by stimulating the denitrosylation of its active site thiol.
細胞内局在	Cytoplasm.

画像



Western blot - Anti-Caspase-3 antibody [31A1067]
(ab13585)

Lane 1: Wild-type HAP1 cell lysate + Staurosporine (1 μ M for 4h)

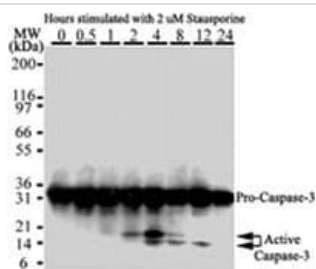
Lane 2: Wild-type HAP1 cell lysate

Lane 3: Caspase-3 knockout HAP1 cell lysate + Staurosporine (1 μ M for 4h)

Lane 4: Caspase-3 knockout HAP1 cell lysate

Lanes 1 - 4: Merged signal (red and green). Green - ab13585 observed at 32 kDa. Red - loading control, **ab181602**, observed at 37 kDa.

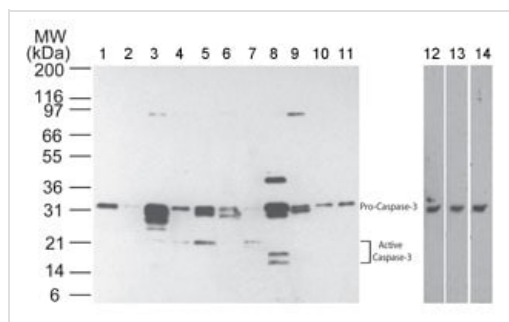
ab13585 was shown to recognise pro Caspase 3 when Caspase 3 knockout samples were used, along with additional cross-reactive bands. Wild-type and Caspase 3 knockout samples (\pm Staurosporine treatment) were subjected to SDS-PAGE. ab13585 at a concentration of 1 μ g/ml and **ab8245** (loading control to GAPDH) diluted to 1/10000 were incubated overnight at 4°C. Blots were developed with Goat anti-Mouse IgG H&L (IRDye® 800CW) preadsorbed (**ab216772**) and Goat Anti-Rabbit IgG H&L (IRDye® 680RD) preadsorbed (**ab216777**) secondary antibodies at 1/10000 dilution for 1 hour at room temperature before imaging.



Western blot - Anti-Caspase-3 antibody [31A1067]
(ab13585)

Western blot analysis of Caspase 3 in HeLa cells using ab13585. Cells were treated with 2 μ M staurosporine for different time periods. Caspase 3 activation is detected in Western blots by the presence of Caspase 3 cleavage fragments.

ab13585 detected both pro (full-length) and active (cleaved) Caspase 3, depending on the treatment time points. Pro Caspase 3 is detected at ~32 kDa. Active/cleaved Caspase 3 (large subunit) is detected at ~14-21 kDa as one or more bands.



Western blot - Anti-Caspase-3 antibody [31A1067]
(ab13585)

All lanes : Anti-Caspase-3 antibody [31A1067] (ab13585) at 5 µg/ml

Lane 1 : Human brain lysate

Lanes 2 & 12 : Human heart lysate

Lane 3 : Human intestine lysate

Lane 4 : Human kidney lysate

Lane 5 : Human liver lysate

Lane 6 : Human lung lysate

Lane 7 : Human muscle lysate

Lane 8 : Human stomach lysate

Lane 9 : Human spleen lysate

Lane 10 : Human ovary lysate

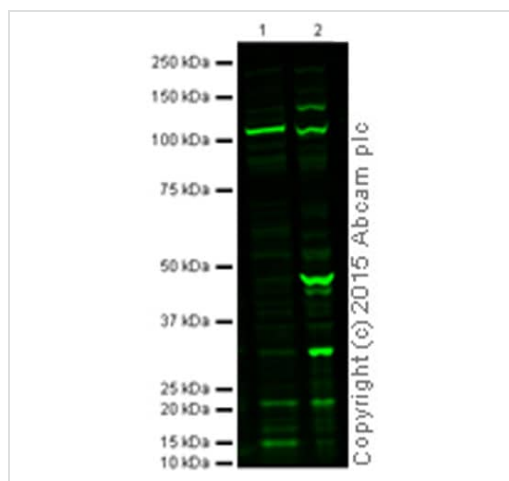
Lane 11 : Human testis lysate

Lane 13 : Mouse heart lysate

Lane 14 : Rat heart lysate

Predicted band size: 31 kDa

Lanes 12, 13 and 14 demonstrate the species cross-reactivity of the antibody in Human, mouse and rat heart lysate, respectively.



Western blot - Anti-Caspase-3 antibody [31A1067]
(ab13585)

All lanes : Anti-MDC1 antibody (**ab13858**) at 1 µg/ml

Lane 1 : HeLa whole cell lysate (Staurosporine treated, 2µM/4hr)

Lane 2 : HeLa whole cell lysate (untreated control)

Lysates/proteins at 20 µg per lane.

Secondary

All lanes : Goat Anti-Rabbit IgG H&L (Alexa Fluor® 790)
(**ab175781**) at 1/10000 dilution

Performed under reducing conditions.

Predicted band size: 31 kDa

Additional bands at: 17 kDa (possible mature (processed) protein), 19 kDa (possible mature (processed) protein), 32 kDa (possible immature (unprocessed))

This blot was produced using a 4-12% Bis-tris gel under the MOPS buffer system. The gel was run at 200V for 50 minutes before being transferred onto a Nitrocellulose membrane at 30V for 70 minutes. The membrane was then blocked for an hour using Licor blocking buffer before being incubated with ab13585 overnight at 4°C. Antibody binding was detected using **ab175781** at a 1:10,000 dilution for 1hr at room temperature and then imaged using the Licor Odyssey CLx.

Please note: All products are "FOR RESEARCH USE ONLY. NOT FOR USE IN DIAGNOSTIC PROCEDURES"

Our Abpromise to you: Quality guaranteed and expert technical support

- Replacement or refund for products not performing as stated on the datasheet
- Valid for 12 months from date of delivery
- Response to your inquiry within 24 hours
- We provide support in Chinese, English, French, German, Japanese and Spanish
- Extensive multi-media technical resources to help you
- We investigate all quality concerns to ensure our products perform to the highest standards

If the product does not perform as described on this datasheet, we will offer a refund or replacement. For full details of the Abpromise, please visit <https://www.abcam.co.jp/abpromise> or contact our technical team.

Terms and conditions

- Guarantee only valid for products bought direct from Abcam or one of our authorized distributors