

Anti-Caspase-12 antibody ab62463

10 References **画像数 1**

製品の概要

製品名	Anti-Caspase-12 antibody
製品の詳細	Rabbit polyclonal to Caspase-12
由来種	Rabbit
特異性	ab62463 can be used for the detection of both the propeptide and cleaved forms of Caspase-12.
アプリケーション	適用あり: WB
種交差性	交差種: Mouse, Rat
免疫原	Synthetic peptide corresponding to Mouse Caspase-12. Database link: O08736
ポジティブ・コントロール	Mouse liver lysate. Rat liver lysate. Human liver tissue.
特記事項	<p>The Life Science industry has been in the grips of a reproducibility crisis for a number of years. Abcam is leading the way in addressing this with our range of recombinant monoclonal antibodies and knockout edited cell lines for gold-standard validation. Please check that this product meets your needs before purchasing.</p> <p>If you have any questions, special requirements or concerns, please send us an inquiry and/or contact our Support team ahead of purchase. Recommended alternatives for this product can be found below, along with publications, customer reviews and Q&As</p>

製品の特性

製品の状態	Liquid
保存方法	Shipped at 4°C. Store at +4°C short term (1-2 weeks). Upon delivery aliquot. Store at +4°C. Avoid freeze / thaw cycle.
バッファー	pH: 7.2 Preservative: 0.02% Sodium azide Constituent: PBS
精製度	Protein A purified
ポリ/モノ	ポリクローナル
アイソタイプ	IgG

アプリケーション

The Abpromise guarantee

Abpromise保証は、次のテスト済みアプリケーションにおけるab62463の使用に適用されます

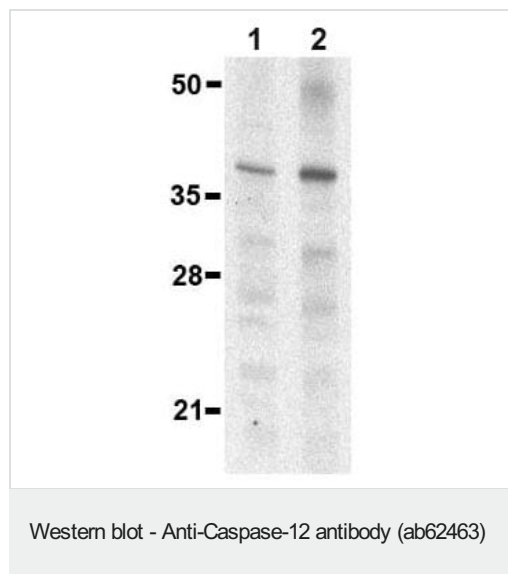
アプリケーションノートには、推奨の開始希釈率がありますが、適切な希釈率につきましてはご検討ください。

アプリケーション	Abreviews	特記事項
WB		Use a concentration of 1 - 2 µg/ml. Detects a band of approximately 39 kDa (predicted molecular weight: 39 kDa).

ターゲット情報

機能	Has no protease activity. May reduce cytokine release in response to bacterial lipopolysaccharide during infections. Reduces activation of NF-kappa-B in response to TNF.
組織特異性	Detected in heart, kidney, liver, lung, pancreas, small intestine, spleen, stomach, thymus and testis.
配列類似性	Belongs to the peptidase C14A family. Contains 1 CARD domain.

画像



All lanes : Anti-Caspase-12 antibody (ab62463) at 1 µg/ml

Lane 1 : Mouse liver lysate

Lane 2 : Rat liver lysate

Lysates/proteins at 15 µg/ml per lane.

Predicted band size: 39 kDa

Observed band size: 39 kDa

Please note: All products are "FOR RESEARCH USE ONLY. NOT FOR USE IN DIAGNOSTIC PROCEDURES"

Our Abpromise to you: Quality guaranteed and expert technical support

- Replacement or refund for products not performing as stated on the datasheet
- Valid for 12 months from date of delivery
- Response to your inquiry within 24 hours
- We provide support in Chinese, English, French, German, Japanese and Spanish
- Extensive multi-media technical resources to help you

- We investigate all quality concerns to ensure our products perform to the highest standards

If the product does not perform as described on this datasheet, we will offer a refund or replacement. For full details of the Abpromise, please visit <https://www.abcam.co.jp/abpromise> or contact our technical team.

Terms and conditions

- Guarantee only valid for products bought direct from Abcam or one of our authorized distributors