


Anti-CASC5/KNL1 antibody ab70537

★★★★★ [1 Abreviews](#) [12 References](#) [画像数 2](#)

製品の概要

製品名	Anti-CASC5/KNL1 antibody
製品の詳細	Rabbit polyclonal to CASC5/KNL1
由来種	Rabbit
アプリケーション	適用あり: WB, IP
種交差性	交差種: Human 交差が予測される動物種: Chimpanzee, Rhesus monkey, Gorilla, Orangutan 
免疫原	Synthetic peptide corresponding to Human CASC5/KNL1 aa 300-400. Synthetic peptide corresponding to Human CASC5/KNL1. Database link: NP_733468.2 Database link: Q8NG31
ポジティブ・コントロール	Whole cell lysate from HeLa or 293T cells
特記事項	<p>The Life Science industry has been in the grips of a reproducibility crisis for a number of years. Abcam is leading the way in addressing this with our range of recombinant monoclonal antibodies and knockout edited cell lines for gold-standard validation. Please check that this product meets your needs before purchasing.</p> <p>If you have any questions, special requirements or concerns, please send us an inquiry and/or contact our Support team ahead of purchase. Recommended alternatives for this product can be found below, along with publications, customer reviews and Q&As</p>

製品の特性

製品の状態	Liquid
保存方法	Shipped at 4°C. Upon delivery aliquot and store at -20°C. Avoid freeze / thaw cycles.
バッファー	pH: 7 Preservative: 0.09% Sodium azide Constituents: 1.815% Tris, 1.764% Sodium citrate, 0.021% PBS
精製度	Immunogen affinity purified
ポリ/モノ	ポリクローナル
アイソタイプ	IgG

アプリケーション

The Abpromise guarantee

Abpromise保証は、次のテスト済みアプリケーションにおけるab70537の使用に適用されず

アプリケーションノートには、推奨の開始希釈率がありますが、適切な希釈率につきましてはご検討ください。

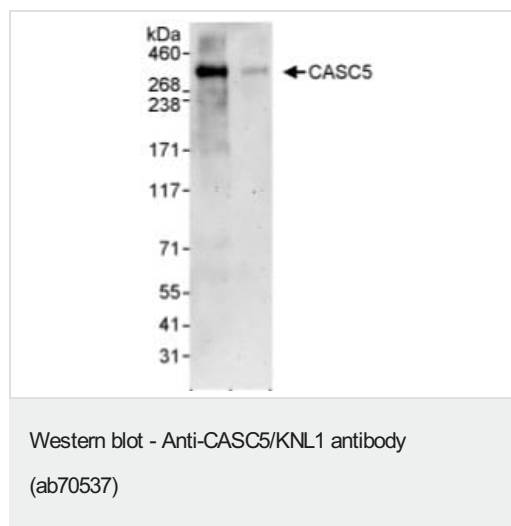
アプリケーション	Abreviews	特記事項
WB		1/2000 - 1/10000. Detects a band of approximately >300 kDa (predicted molecular weight: 265 kDa).
IP		Use at 2-5 µg/mg of lysate.

ターゲット情報

関連性 Part of the MIS12 complex, which may be fundamental for kinetochore formation and proper chromosome segregation during mitosis. Four known isoforms exist.

細胞内局在 Acrosome. Nucleus.

画像



All lanes : Anti-CASC5/KNL1 antibody (ab70537) at 1/5000 dilution

Lane 1 : Whole cell lysate from 293T cells at 50 µg

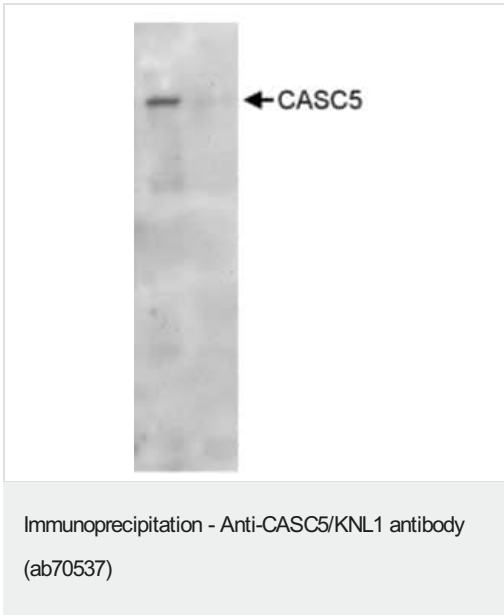
Lane 2 : Whole cell lysate from 293T cells at 15 µg

Developed using the ECL technique.

Predicted band size: 265 kDa

Observed band size: >300 kDa

Exposure time: 3 minutes



1mg of whole cell lysate from HeLa cells was immunoprecipitated using ab70537 at 3ug/mg of lysate (lane 1) or a control rabbit Ig (lane 2). For the subsequent blot, 20% of the precipitate was loaded per lane, and ab70537 was used at 1ug/ml. Detection: chemiluminescence with exposure time of 3 minutes.

Please note: All products are "FOR RESEARCH USE ONLY. NOT FOR USE IN DIAGNOSTIC PROCEDURES"

Our Abpromise to you: Quality guaranteed and expert technical support

- Replacement or refund for products not performing as stated on the datasheet
- Valid for 12 months from date of delivery
- Response to your inquiry within 24 hours
- We provide support in Chinese, English, French, German, Japanese and Spanish
- Extensive multi-media technical resources to help you
- We investigate all quality concerns to ensure our products perform to the highest standards

If the product does not perform as described on this datasheet, we will offer a refund or replacement. For full details of the Abpromise, please visit <https://www.abcam.co.jp/abpromise> or contact our technical team.

Terms and conditions

- Guarantee only valid for products bought direct from Abcam or one of our authorized distributors