




Anti-CARS antibody ab235536

画像数 2

製品の概要

製品名	Anti-CARS antibody
製品の詳細	Rabbit polyclonal to CARS
由来種	Rabbit
アプリケーション	適用あり: IHC-P, WB
種交差性	交差種: Mouse, Human 交差が予測される動物種: Chicken, Cynomolgus monkey 
免疫原	Recombinant fragment corresponding to Human CARS aa 200-500. Database link: P49589 <div style="text-align: right;">  Run BLAST with  Run BLAST with </div>
ポジティブ・コントロール	WB: PC-3 whole cell lysate. Mouse lung and kidney tissue lysate. IHC-P: Human pancreas tissue.
特記事項	<p>The Life Science industry has been in the grips of a reproducibility crisis for a number of years. Abcam is leading the way in addressing this with our range of recombinant monoclonal antibodies and knockout edited cell lines for gold-standard validation. Please check that this product meets your needs before purchasing.</p> <p>If you have any questions, special requirements or concerns, please send us an inquiry and/or contact our Support team ahead of purchase. Recommended alternatives for this product can be found below, along with publications, customer reviews and Q&As</p>

製品の特性

製品の状態	Liquid
保存方法	Shipped at 4°C. Store at +4°C short term (1-2 weeks). Upon delivery aliquot. Store at -20°C long term. Avoid freeze / thaw cycle.
バッファー	pH: 7.40 Preservative: 0.03% Proclin 300 Constituents: 50% Glycerol (glycerin, glycerine), PBS
精製度	Protein G purified
特記事項 (精製)	Purity >95%.
ポリ/モノ	ポリクローナル
アイソタイプ	IgG

アプリケーション

The Abpromise guarantee **Abpromise保証は、** 次のテスト済みアプリケーションにおけるab235536の使用に適用されます
アプリケーションノートには、推奨の開始希釈率がありますが、適切な希釈率につきましてはご検討ください。

アプリケーション	Abreviews	特記事項
IHC-P		1/20 - 1/200.
WB		1/2000 - 1/5000.

ターゲット情報

関連疾患

Note=A chromosomal aberration involving CARS is associated with inflammatory myofibroblastic tumors (IMTs). Translocation t(2;11)(p23;p15) with ALK.

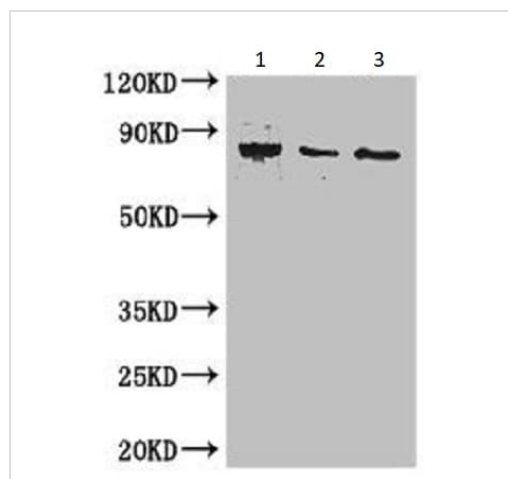
配列類似性

Belongs to the class-I aminoacyl-tRNA synthetase family.

細胞内局在

Cytoplasm.

画像



Western blot - Anti-CARS antibody (ab235536)

All lanes : Anti-CARS antibody (ab235536) at 1/2000 dilution

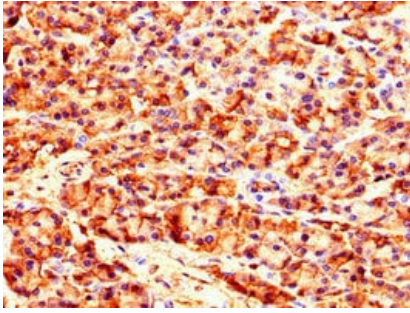
Lane 1 : PC-3 (Human prostate adenocarcinoma cell line) whole cell lysate

Lane 2 : Mouse lung tissue lysate

Lane 3 : Mouse kidney tissue lysate

Secondary

All lanes : Goat polyclonal to rabbit IgG at 1/50000 dilution



Paraffin-embedded human pancreas tissue stained for CARS with ab235536 at 1/100 dilution in immunohistochemical analysis.

Immunohistochemistry (Formalin/PFA-fixed paraffin-embedded sections) - Anti-CARS antibody (ab235536)

Please note: All products are "FOR RESEARCH USE ONLY. NOT FOR USE IN DIAGNOSTIC PROCEDURES"

Our Abpromise to you: Quality guaranteed and expert technical support

- Replacement or refund for products not performing as stated on the datasheet
- Valid for 12 months from date of delivery
- Response to your inquiry within 24 hours
- We provide support in Chinese, English, French, German, Japanese and Spanish
- Extensive multi-media technical resources to help you
- We investigate all quality concerns to ensure our products perform to the highest standards

If the product does not perform as described on this datasheet, we will offer a refund or replacement. For full details of the Abpromise, please visit <https://www.abcam.co.jp/abpromise> or contact our technical team.

Terms and conditions

- Guarantee only valid for products bought direct from Abcam or one of our authorized distributors