


Anti-Carma 1/CARD11 antibody [EPR3177] ab109310

リコンビナント RabMAb

画像数 2

製品の概要

製品名	Anti-Carma 1/CARD11 antibody [EPR3177]
製品の詳細	Rabbit monoclonal [EPR3177] to Carma 1/CARD11
由来種	Rabbit
アプリケーション	適用あり: WB 適用なし: Flow Cyt, IHC-P or IP
種交差性	交差種: Human 交差が予測される動物種: Mouse 
免疫原	Synthetic peptide. This information is proprietary to Abcam and/or its suppliers.
ポジティブ・コントロール	K562 and Ramos cell lysates
特記事項	<p>This product is a recombinant monoclonal antibody, which offers several advantages including:</p> <ul style="list-style-type: none">- High batch-to-batch consistency and reproducibility- Improved sensitivity and specificity- Long-term security of supply- Animal-free production <p>For more information see here.</p> <p>Our RabMAb[®] technology is a patented hybridoma-based technology for making rabbit monoclonal antibodies. For details on our patents, please refer to RabMAb[®] patents.</p> <p>Rat: We have preliminary internal testing data to indicate this antibody may not react with this species. Please contact us for more information.</p>

製品の特性

製品の状態	Liquid
保存方法	Shipped at 4°C. Store at -20°C. Stable for 12 months at -20°C.
バッファー	pH: 7.20 Preservative: 0.05% Sodium azide Constituents: 0.1% BSA, 40% Glycerol (glycerin, glycerine), 9.85% Tris glycine, 50% Tissue culture supernatant
精製度	Protein A purified

ポリ/モノ	モノクローナル
クローン名	EPR3177
アイソタイプ	IgG

アプリケーション

The Abpromise guarantee **Abpromise保証は、次のテスト済みアプリケーションにおけるab109310の使用に適用されず**
 アプリケーションノートには、推奨の開始希釈率がありますが、適切な希釈率につきましてはご検討ください。

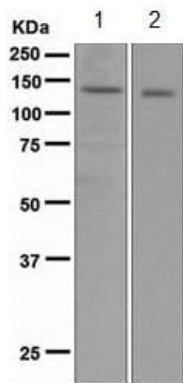
アプリケーション	Abreviews	特記事項
WB		1/1000 - 1/10000. Detects a band of approximately 130 kDa (predicted molecular weight: 133 kDa).

追加情報 Is unsuitable for Flow Cyt, IHC-P or IP.

ターゲット情報

機能	Involved in the costimulatory signal essential for T-cell receptor (TCR)-mediated T-cell activation. Its binding to DPP4 induces T-cell proliferation and NF-kappa-B activation in a T-cell receptor/CD3-dependent manner. Activates NF-kappa-B via BCL10 and IKK. Stimulates the phosphorylation of BCL10.
組織特異性	Detected in adult peripheral blood leukocytes, thymus, spleen and liver. Also found in promyelocytic leukemia HL-60 cells, chronic myelogenous leukemia K562 cells, Burkitt's lymphoma Raji cells and colorectal adenocarcinoma SW480 cells. Not detected in HeLa S3, Molt-4, A549 and G431 cells.
配列類似性	Contains 1 CARD domain. Contains 1 guanylate kinase-like domain. Contains 1 PDZ (DHR) domain.
翻訳後修飾	Phosphorylation at Ser-559, Ser-644 and Ser-652 by PRKCBB leads to a shift from an inactive to an active form that activates the NF-kappa-B signaling.
細胞内局在	Cytoplasm. Membrane raft. Colocalized with DPP4 in membrane rafts.

画像



Western blot - Anti-Carma 1/CARD11 antibody [EPR3177] (ab109310)

All lanes : Anti-Carma 1/CARD11 antibody [EPR3177] (ab109310) at 1/1000 dilution

Lane 1 : K562 cell lysates

Lane 2 : Ramos cell lysates

Lysates/proteins at 10 µg per lane.

Predicted band size: 133 kDa

Observed band size: 130 kDa

Why choose a recombinant antibody?



Research with confidence
Consistent and reproducible results



Long-term and scalable supply
Recombinant technology



Success from the first experiment
Confirmed specificity



Ethical standards compliant
Animal-free production

Anti-Carma 1/CARD11 antibody [EPR3177] (ab109310)

Please note: All products are "FOR RESEARCH USE ONLY. NOT FOR USE IN DIAGNOSTIC PROCEDURES"

Our Abpromise to you: Quality guaranteed and expert technical support

- Replacement or refund for products not performing as stated on the datasheet
- Valid for 12 months from date of delivery
- Response to your inquiry within 24 hours
- We provide support in Chinese, English, French, German, Japanese and Spanish
- Extensive multi-media technical resources to help you
- We investigate all quality concerns to ensure our products perform to the highest standards

If the product does not perform as described on this datasheet, we will offer a refund or replacement. For full details of the Abpromise, please visit <https://www.abcam.co.jp/abpromise> or contact our technical team.

Terms and conditions

- Guarantee only valid for products bought direct from Abcam or one of our authorized distributors