

### Anti-Carma 1/CARD11 antibody [EPR2557] ab124730

リコンビナント RabMAb<sup>®</sup>

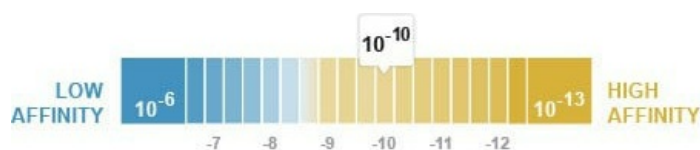
画像数 3

#### 製品の概要

製品名	Anti-Carma 1/CARD11 antibody [EPR2557]
製品の詳細	Rabbit monoclonal [EPR2557] to Carma 1/CARD11
由来種	Rabbit
アプリケーション	<b>適用あり:</b> WB <b>適用なし:</b> Flow Cyt, ICC/IF, IHC-P or IP
種交差性	<b>交差種:</b> Human <b>非交差種:</b> Mouse, Rat
免疫原	Synthetic peptide within Human Carma 1/CARD11 aa 1100-1200 (C terminal). The exact sequence is proprietary.
ポジティブ・コントロール	Lysates of: Molt-4, Ramos, Jurkat, K562
特記事項	This product is a recombinant monoclonal antibody, which offers several advantages including: <ul style="list-style-type: none"> <li>- High batch-to-batch consistency and reproducibility</li> <li>- Improved sensitivity and specificity</li> <li>- Long-term security of supply</li> <li>- Animal-free production</li> </ul> For more information <a href="#">see here</a> . Our RabMAb <sup>®</sup> technology is a patented hybridoma-based technology for making rabbit monoclonal antibodies. For details on our patents, please refer to <a href="#">RabMAb<sup>®</sup> patents</a> .

#### 製品の特性

製品の状態	Liquid
保存方法	Shipped at 4°C. Store at -20°C. Stable for 12 months at -20°C.
解離定数 (K <sub>D</sub> 値)	K <sub>D</sub> = 2.12 x 10 <sup>-10</sup> M



[Learn more about K<sub>D</sub>](#)

バッファー	pH: 7.20
-------	----------

	Preservative: 0.05% Sodium azide Constituents: 40% Glycerol (glycerin, glycerine), 9.85% Tris glycine, 50% Tissue culture supernatant
精製度	Protein A purified
ポリ/モノ	モノクローナル
クローン名	EPR2557
アイソタイプ	IgG

## アプリケーション

**The Abpromise guarantee** Abpromise保証は、 次のテスト済みアプリケーションにおけるab124730の使用に適用されます  
アプリケーションノートには、推奨の開始希釈率がありますが、適切な希釈率につきましてはご検討ください。

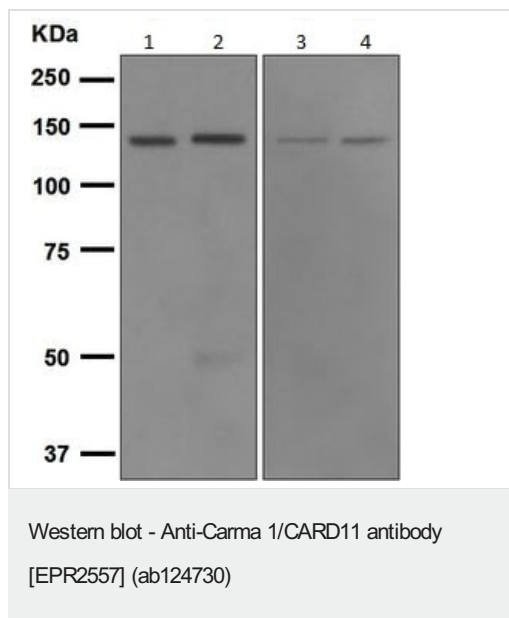
アプリケーション	Abreviews	特記事項
WB		1/1000 - 1/10000. Predicted molecular weight: 133 kDa.

**追加情報** Is unsuitable for Flow Cyt, ICC/IF, IHC-P or IP.

## ターゲット情報

機能	Involved in the costimulatory signal essential for T-cell receptor (TCR)-mediated T-cell activation. Its binding to DPP4 induces T-cell proliferation and NF-kappa-B activation in a T-cell receptor/CD3-dependent manner. Activates NF-kappa-B via BCL10 and IKK. Stimulates the phosphorylation of BCL10.
組織特異性	Detected in adult peripheral blood leukocytes, thymus, spleen and liver. Also found in promyelocytic leukemia HL-60 cells, chronic myelogenous leukemia K562 cells, Burkitt's lymphoma Raji cells and colorectal adenocarcinoma SW480 cells. Not detected in HeLa S3, Molt-4, A549 and G431 cells.
配列類似性	Contains 1 CARD domain. Contains 1 guanylate kinase-like domain. Contains 1 PDZ (DHR) domain.
翻訳後修飾	Phosphorylation at Ser-559, Ser-644 and Ser-652 by PRKCBB leads to a shift from an inactive to an active form that activates the NF-kappa-B signaling.
細胞内局在	Cytoplasm. Membrane raft. Colocalized with DPP4 in membrane rafts.

## 画像



**All lanes :** Anti-Carma 1/CARD11 antibody [EPR2557] (ab124730)

**Lane 1 :** Molt-4 cell lysate

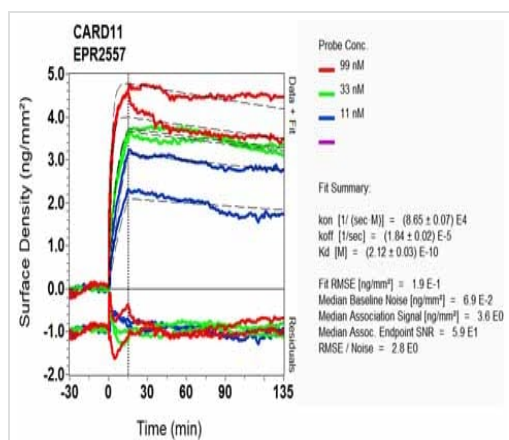
**Lane 2 :** Ramos cell lysate

**Lane 3 :** Jurkat cell lysate

**Lane 4 :** K562 cell lysate

Lysates/proteins at 10 µg per lane.

**Predicted band size:** 133 kDa



O1-RD Scanning - Anti-Carma 1/CARD11 antibody [EPR2557] (ab124730)

Equilibrium disassociation constant ( $K_D$ )

Learn more about  $K_D$

[Click here to learn more about  \$K\_D\$](#)

### Why choose a recombinant antibody?



**Research with confidence**  
Consistent and reproducible results



**Long-term and scalable supply**  
Recombinant technology



**Success from the first experiment**  
Confirmed specificity



**Ethical standards compliant**  
Animal-free production

Anti-Carma 1/CARD11 antibody [EPR2557]  
(ab124730)

**Please note:** All products are "FOR RESEARCH USE ONLY. NOT FOR USE IN DIAGNOSTIC PROCEDURES"

### Our Abpromise to you: Quality guaranteed and expert technical support

---

- Replacement or refund for products not performing as stated on the datasheet
- Valid for 12 months from date of delivery
- Response to your inquiry within 24 hours
- We provide support in Chinese, English, French, German, Japanese and Spanish
- Extensive multi-media technical resources to help you
- We investigate all quality concerns to ensure our products perform to the highest standards

If the product does not perform as described on this datasheet, we will offer a refund or replacement. For full details of the Abpromise, please visit <https://www.abcam.co.jp/abpromise> or contact our technical team.

### Terms and conditions

---

- Guarantee only valid for products bought direct from Abcam or one of our authorized distributors