

Anti-Carboxymethyl Lysine antibody [CML26] ab125145

10 References [画像数 1](#)

製品の概要

製品名	Anti-Carboxymethyl Lysine antibody [CML26]
製品の詳細	Mouse monoclonal [CML26] to Carboxymethyl Lysine
由来種	Mouse
アプリケーション	適用あり: WB, IHC-P, IHC-Fr, ICC/IF, ELISA, Flow Cyt
種交差性	交差種: Species independent
免疫原	Carboxymethyl Lysine conjugated to KLH.
ポジティブ・コントロール	Human cardiac tissue (intramyocardial arteries).
特記事項	Other isotypes maybe present. The Life Science industry has been in the grips of a reproducibility crisis for a number of years. Abcam is leading the way in addressing this with our range of recombinant monoclonal antibodies and knockout edited cell lines for gold-standard validation. Please check that this product meets your needs before purchasing. If you have any questions, special requirements or concerns, please send us an inquiry and/or contact our Support team ahead of purchase. Recommended alternatives for this product can be found below, along with publications, customer reviews and Q&As

製品の特性

製品の状態	Liquid
保存方法	Shipped at 4°C. Upon delivery aliquot and store at -20°C. Avoid freeze / thaw cycles.
バッファー	Preservative: 0.02% Sodium azide Constituents: 0.1% BSA, 99% PBS
精製度	Protein G purified
ポリ/モノ	モノクローナル
クローン名	CML26
アイソタイプ	IgG1

アプリケーション

The Abpromise guarantee

Abpromise保証は、 次のテスト済みアプリケーションにおけるab125145の使用に適用されます

アプリケーションノートには、推奨の開始希釈率がありますが、適切な希釈率につきましてはご確認ください。

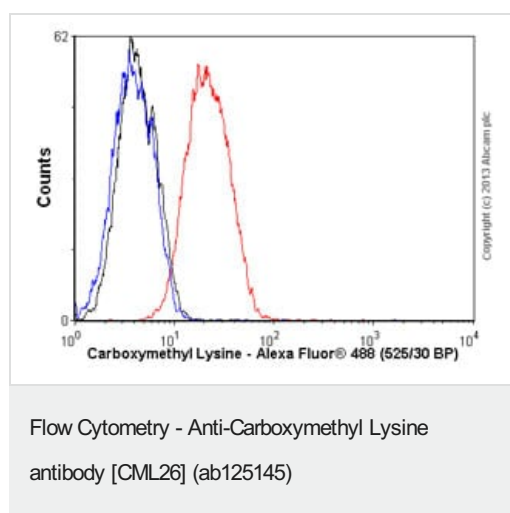
アプリケーション	Abreviews	特記事項
WB		Use at an assay dependent concentration.
IHC-P		1/50. Fix with 4% formalin.
IHC-Fr		1/50.
ICC/IF		Use at an assay dependent concentration. Fix with 2% phosphate-buffered glutaraldehyde solution.
ELISA		Use at an assay dependent concentration.
Flow Cyt		Use 0.1µg for 10 ⁶ cells. ab170190 - Mouse monoclonal IgG1, is suitable for use as an isotype control with this antibody.

ターゲット情報

関連性

N epsilon carboxymethyl lysine (CML or Carboxymethyl Lysine) is formed by the non enzymatic Schiff base reaction of glucose with proteins, followed by an Amadori rearrangement and oxidation that leaves only a carboxymethyl group attached to the lysine. The levels of CML adducts accumulate over time and have been used as an indicator of both serum glucose levels and oxidative protein damage. Elevated serum CML modified proteins have been associated with diabetes and may contribute to diabetic retinopathy, nephropathy and angiopathy.

画像



Overlay histogram showing HepG2 cells stained with ab125145 (red line). The cells were fixed with 80% methanol (5 min) and then permeabilized with 0.1% PBS-Tween for 20 min. The cells were then incubated in 1x PBS / 10% normal goat serum / 0.3M glycine to block non-specific protein-protein interactions followed by the antibody (ab125145, 0.1µg/1x10⁶ cells) for 30 min at 22°C. The secondary antibody used was Alexa Fluor® 488 goat anti-mouse IgG (H&L) (**ab150113**) at 1/2000 dilution for 30 min at 22°C. Isotype control antibody (black line) was mouse IgG1 [ICIGG1] (**ab91353**, 1µg/1x10⁶ cells) used under the same conditions. Unlabelled sample (blue line) was also used as a control. Acquisition of >5,000 events were collected using a 20mW Argon ion laser (488nm) and 525/30 bandpass filter. This antibody gave a positive signal in HepG2 cells fixed with 4% paraformaldehyde (10 min)/permeabilized with 0.1% PBS-Tween for 20 min used under the same conditions.

Please note: All products are "FOR RESEARCH USE ONLY. NOT FOR USE IN DIAGNOSTIC PROCEDURES"

Our Abpromise to you: Quality guaranteed and expert technical support

- Replacement or refund for products not performing as stated on the datasheet
- Valid for 12 months from date of delivery
- Response to your inquiry within 24 hours
- We provide support in Chinese, English, French, German, Japanese and Spanish
- Extensive multi-media technical resources to help you
- We investigate all quality concerns to ensure our products perform to the highest standards

If the product does not perform as described on this datasheet, we will offer a refund or replacement. For full details of the Abpromise, please visit <https://www.abcam.co.jp/abpromise> or contact our technical team.

Terms and conditions

- Guarantee only valid for products bought direct from Abcam or one of our authorized distributors