

Anti-Carboxymethyl Lysine antibody ab27684

★★★★☆ [3 Abreviews](#) [37 References](#) [画像数 1](#)

製品の概要

製品名	Anti-Carboxymethyl Lysine antibody
製品の詳細	Rabbit polyclonal to Carboxymethyl Lysine
由来種	Rabbit
特異性	This antibody specifically binds to Carboxy methyl Lysine modified proteins.
アプリケーション	適用あり: ELISA, WB
種交差性	交差種: Species independent
免疫原	Carboxy methyl Lysine conjugated to KLH.
特記事項	<p>The Life Science industry has been in the grips of a reproducibility crisis for a number of years. Abcam is leading the way in addressing this with our range of recombinant monoclonal antibodies and knockout edited cell lines for gold-standard validation. Please check that this product meets your needs before purchasing.</p> <p>If you have any questions, special requirements or concerns, please send us an inquiry and/or contact our Support team ahead of purchase. Recommended alternatives for this product can be found below, along with publications, customer reviews and Q&As</p>

製品の特性

製品の状態	Liquid
保存方法	Shipped at 4°C. Store at +4°C short term (1-2 weeks). Upon delivery aliquot. Store at -20°C long term.
バッファー	pH: 7.20 Preservative: 0.02% Sodium azide Constituents: PBS, 0.015% EDTA, 0.44% Sodium chloride, 30% Glycerol (glycerin, glycerine), 1.23% Sodium phosphate
特記事項(精製)	This antibody was purified by Carboxy methyl Lysine protein Sepharose affinity column.
ポリ/モノ	ポリクローナル
アイソタイプ	IgG

アプリケーション

The Abpromise guarantee

Abpromise保証は、次のテスト済みアプリケーションにおけるab27684の使用に適用されます

アプリケーションノートには、推奨の開始希釈率がありますが、適切な希釈率につきましてはご検討ください。

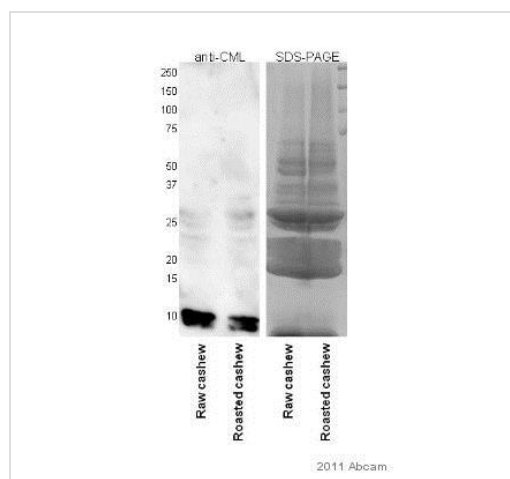
アプリケーション	Abreviews	特記事項
ELISA		1/2500 - 1/20000.
WB	★★★★★ (1)	1/2500 - 1/20000.

ターゲット情報

関連性

N epsilon carboxymethyl lysine (CML or Carboxymethyl Lysine) is formed by the non enzymatic Schiff base reaction of glucose with proteins, followed by an Amadori rearrangement and oxidation that leaves only a carboxymethyl group attached to the lysine. The levels of CML adducts accumulate over time and have been used as an indicator of both serum glucose levels and oxidative protein damage. Elevated serum CML modified proteins have been associated with diabetes and may contribute to diabetic retinopathy, nephropathy and angiopathy.

画像



Western blot - Anti-Carboxymethyl Lysine antibody (ab27684)

This image is courtesy of an Abreview submitted by Chris Mattison

All lanes : Anti-Carboxymethyl Lysine antibody (ab27684) at 1/1000 dilution (in PBST for 18 hours at 4°C)

Lane 1 : Whole tissue lysate of raw cashew nuts

Lane 2 : Whole tissue lysate of roasted cashew nuts

Lysates/proteins at 50 µg per lane.

Secondary

All lanes : An HRP-conjugated Goat anti-rabbit polyclonal

Developed using the ECL technique.

Observed band size: 10-12 kDa

Exposure time: 1 minute

Blocking Step: 2% Milk for 30 minutes at 25°C

Please note: All products are "FOR RESEARCH USE ONLY. NOT FOR USE IN DIAGNOSTIC PROCEDURES"

Our Abpromise to you: Quality guaranteed and expert technical support

- Replacement or refund for products not performing as stated on the datasheet
- Valid for 12 months from date of delivery
- Response to your inquiry within 24 hours

- We provide support in Chinese, English, French, German, Japanese and Spanish
- Extensive multi-media technical resources to help you
- We investigate all quality concerns to ensure our products perform to the highest standards

If the product does not perform as described on this datasheet, we will offer a refund or replacement. For full details of the Abpromise, please visit <https://www.abcam.co.jp/abpromise> or contact our technical team.

Terms and conditions

- Guarantee only valid for products bought direct from Abcam or one of our authorized distributors