

### Anti-CAPZA2 antibody ab101451

面格新 2

医薬用外劇物

#### 製品の概要

製品名	Anti-CAPZA2 antibody
製品の詳細	Rabbit polyclonal to CAPZA2
由来種	Rabbit
アプリケーション	適用あり: WB
種交差性	交差種: Mouse, Human, Zebrafish 交差が予測される動物種: Rat, Cow, Dog, Monkey 
免疫原	Recombinant fragment, corresponding to a region within amino acids 134-268 of Human CAPZA2 (AAH05338).
ポジティブ・コントロール	A549, HeLa, HepG2, HCT116, Adult zebrafish and NIH-3T3 whole cell lysate
特記事項	<p>The Life Science industry has been in the grips of a reproducibility crisis for a number of years. Abcam is leading the way in addressing this with our range of recombinant monoclonal antibodies and knockout edited cell lines for gold-standard validation. Please check that this product meets your needs before purchasing.</p> <p>If you have any questions, special requirements or concerns, please send us an inquiry and/or contact our Support team ahead of purchase. Recommended alternatives for this product can be found below, along with publications, customer reviews and Q&amp;As</p>

#### 製品の特性

製品の状態	Liquid
保存方法	Shipped at 4°C. Upon delivery aliquot and store at -20°C or -80°C. Avoid repeated freeze / thaw cycles.
バッファー	pH: 7.00 Preservative: 0.01% Thimerosal (merthiolate) Constituents: 1.21% Tris, 0.75% Glycine, 20% Glycerol (glycerin, glycerine)
精製度	Immunogen affinity purified
ポリ/モノ	ポリクローナル
アイソタイプ	IgG

## アプリケーション

### The Abpromise guarantee

**Abpromise保証は、**次のテスト済みアプリケーションにおけるab101451の使用に適用されます

アプリケーションノートには、推奨の開始希釈率がありますが、適切な希釈率につきましてはご確認ください。

アプリケーション	Abreviews	特記事項
WB		1/500 - 1/3000. Predicted molecular weight: 33 kDa.

## ターゲット情報

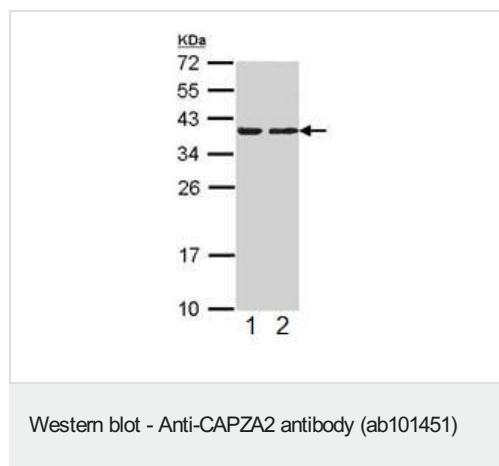
### 機能

F-actin-capping proteins bind in a Ca(2+)-independent manner to the fast growing ends of actin filaments (barbed end) thereby blocking the exchange of subunits at these ends. Unlike other capping proteins (such as gelsolin and severin), these proteins do not sever actin filaments.

### 配列類似性

Belongs to the F-actin-capping protein alpha subunit family.

## 画像



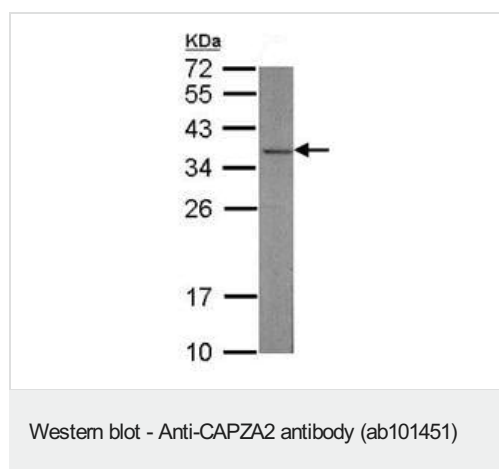
**All lanes :** Anti-CAPZA2 antibody (ab101451) at 1/1000 dilution

**Lane 1 :** HepG2 whole cell lysate

**Lane 2 :** HCT116 whole cell lysate

Lysates/proteins at 30 µg per lane.

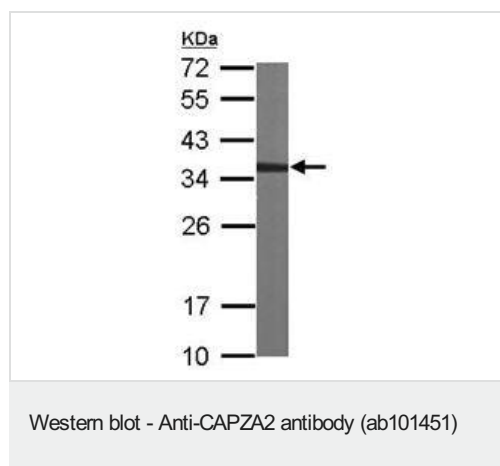
**Predicted band size:** 33 kDa



Anti-CAPZA2 antibody (ab101451) at 1/1000 dilution + Adult zebrafish whole cell lysate at 10 µg

**Predicted band size:** 33 kDa

12% SDS PAGE



Anti-CAPZA2 antibody (ab101451) at 1/1000 dilution + NIH-3T3 whole cell lysate at 30 µg

**Predicted band size:** 33 kDa

12% SDS PAGE

**Please note:** All products are "FOR RESEARCH USE ONLY. NOT FOR USE IN DIAGNOSTIC PROCEDURES"

### Our Abpromise to you: Quality guaranteed and expert technical support

---

- Replacement or refund for products not performing as stated on the datasheet
- Valid for 12 months from date of delivery
- Response to your inquiry within 24 hours
- We provide support in Chinese, English, French, German, Japanese and Spanish
- Extensive multi-media technical resources to help you
- We investigate all quality concerns to ensure our products perform to the highest standards

If the product does not perform as described on this datasheet, we will offer a refund or replacement. For full details of the Abpromise, please visit <https://www.abcam.co.jp/abpromise> or contact our technical team.

### Terms and conditions

---

- Guarantee only valid for products bought direct from Abcam or one of our authorized distributors