

Anti-CAPS2 antibody ab69794

2 References [画像数 3](#)

製品の概要

製品名	Anti-CAPS2 antibody
製品の詳細	Rabbit polyclonal to CAPS2
由来種	Rabbit
特異性	specific to CAPS2 and does not recognize CADPS1
アプリケーション	適用あり: ICC/IF, IHC-P, WB
種交差性	交差種: Human
免疫原	Synthetic peptide corresponding to Human CAPS2 (internal sequence). Database link: Q86UW7
ポジティブ・コントロール	Human brain cytoplasmic lysate
特記事項	<p>The Life Science industry has been in the grips of a reproducibility crisis for a number of years. Abcam is leading the way in addressing this with our range of recombinant monoclonal antibodies and knockout edited cell lines for gold-standard validation. Please check that this product meets your needs before purchasing.</p> <p>If you have any questions, special requirements or concerns, please send us an inquiry and/or contact our Support team ahead of purchase. Recommended alternatives for this product can be found below, along with publications, customer reviews and Q&As</p>

製品の特性

製品の状態	Liquid
保存方法	Shipped at 4°C. Store at +4°C.
バッファー	pH: 7.2 Preservative: 0.02% Sodium azide Constituent: PBS
精製度	Immunogen affinity purified
ポリ/モノ	ポリクローナル
アイソタイプ	IgG

アプリケーション

The Abpromise guarantee

Abpromise保証は、次のテスト済みアプリケーションにおけるab69794の使用に適用されます

アプリケーションノートには、推奨の開始希釈率がありますが、適切な希釈率につきましてはご検討ください。

アプリケーション	Abreviews	特記事項
ICC/IF		Use a concentration of 20 µg/ml.
IHC-P		Use a concentration of 5 µg/ml.
WB		Use a concentration of 0.5 - 1 µg/ml. Detects a band of approximately 147 kDa (predicted molecular weight: 147 kDa).

ターゲット情報

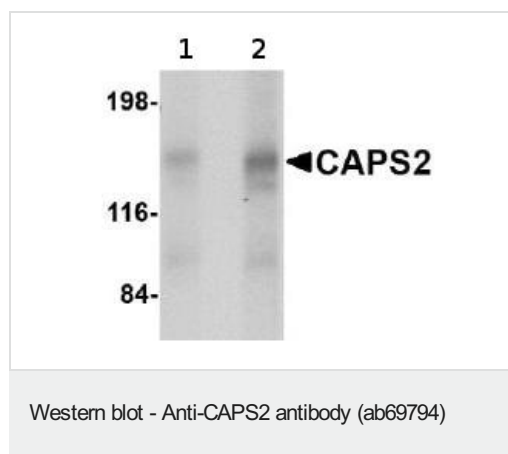
関連性

CADPS2 (Ca²⁺-dependent activator protein for secretion) belongs to the CAPS/Cadps family and consists of two members, CAPS1 and CAPS2. Both members play an important role in secretory granule exocytosis. CADPS2 is involved in the release of two neurotrophins, brain-derived neurotrophic factor and neurotrophin-3, from parallel fibers of cerebellar granule cells. CAPS proteins are expressed predominantly in the brain. CADPS2 has been found in various brain regions including the olfactory bulb, cerebrum, hippocampal formation, thalamus, mesencephalic tegmentum, cerebellum, medulla and spinal cord. CADPS2 colocalizes with proteins related to exocytosis (VAMP and SNAP-25) and endocytosis (Dynamin I) in the cell soma and processes of the mesencephalic tegmentum and cerebellum.

細胞内局在

Cytoplasmic. Membrane-associated to vesicles.

画像



Lane 1 : Anti-CAPS2 antibody (ab69794) at 0.5 µg/ml

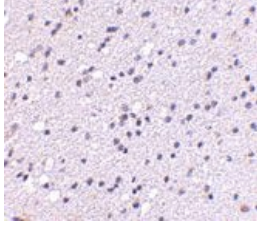
Lane 2 : Anti-CAPS2 antibody (ab69794) at 1 µg/ml

All lanes : Human brain tissue lysate

Lysates/proteins at 15 µg per lane.

Predicted band size: 147 kDa

Observed band size: 148 kDa



Immunohistochemistry (Formalin/PFA-fixed paraffin-embedded sections) - Anti-CAPS2 antibody (ab69794)

ab69794 at 5 µg/ml staining CAPS2 in human brain tissue section by Immunohistochemistry (Formalin/ PFA fixed paraffin-embedded sections).

Immunocytochemistry/ Immunofluorescence - Anti-CAPS2 antibody (ab69794)

Immunofluorescence of CAPS2 in Human Brain cells using ab69794 at 20 ug/ml.

Please note: All products are "FOR RESEARCH USE ONLY. NOT FOR USE IN DIAGNOSTIC PROCEDURES"

Our Abpromise to you: Quality guaranteed and expert technical support

- Replacement or refund for products not performing as stated on the datasheet
- Valid for 12 months from date of delivery
- Response to your inquiry within 24 hours
- We provide support in Chinese, English, French, German, Japanese and Spanish
- Extensive multi-media technical resources to help you
- We investigate all quality concerns to ensure our products perform to the highest standards

If the product does not perform as described on this datasheet, we will offer a refund or replacement. For full details of the Abpromise, please visit <https://www.abcam.co.jp/abpromise> or contact our technical team.

Terms and conditions

- Guarantee only valid for products bought direct from Abcam or one of our authorized distributors