

Anti-CAPRIN2 antibody ab122583

画像数 2

製品の概要

製品名	Anti-CAPRIN2 antibody
製品の詳細	Rabbit polyclonal to CAPRIN2
由来種	Rabbit
アプリケーション	適用あり: ICC, IHC-P
種交差性	交差種: Human
免疫原	antigen sequence: TPKPRENNVE SQKHSLSQS QISPKSWGVA TASLIPNDQL LPRKLNTEPK DVPKPVHQPV GSSSTLPKDP VLRKEKLQDL MTQIQGT, corresponding to internal sequence amino acids 544-630 of Human CAPRIN2.

[Run BLAST with Expasy](#) [Run BLAST with NCBI](#)

ポジティブ・コントロール

IHC-P: Human hippocampus tissue. ICC: Human cell line U-251 MG.

特記事項

The Life Science industry has been in the grips of a reproducibility crisis for a number of years. Abcam is leading the way in addressing this with our range of recombinant monoclonal antibodies and knockout edited cell lines for gold-standard validation. Please check that this product meets your needs before purchasing.

If you have any questions, special requirements or concerns, please send us an inquiry and/or contact our Support team ahead of purchase. Recommended alternatives for this product can be found below, along with publications, customer reviews and Q&As

製品の特性

製品の状態	Liquid
保存方法	Shipped at 4°C. Store at -20°C or -80°C. Avoid freeze / thaw cycle. Store undiluted.
バッファー	pH: 7.20 Preservative: 0.02% Sodium azide Constituents: 59% PBS, 40% Glycerol (glycerin, glycerine)
精製度	Immunogen affinity purified
ポリモノ	ポリクローナル
アイソタイプ	IgG

アプリケーション

The Abpromise guarantee

Abpromise保証は、次のテスト済みアプリケーションにおけるab122583の使用に適用されます

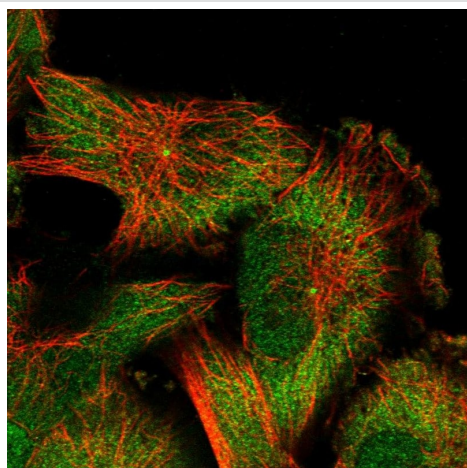
アプリケーションノートには、推奨の開始希釈率がありますが、適切な希釈率につきましてはご検討ください。

アプリケーション	Abreviews	特記事項
ICC		Use a concentration of 0.25 - 2 µg/ml.
IHC-P		1/50 - 1/200. Perform heat mediated antigen retrieval with citrate buffer pH 6 before commencing with IHC staining protocol.

ターゲット情報

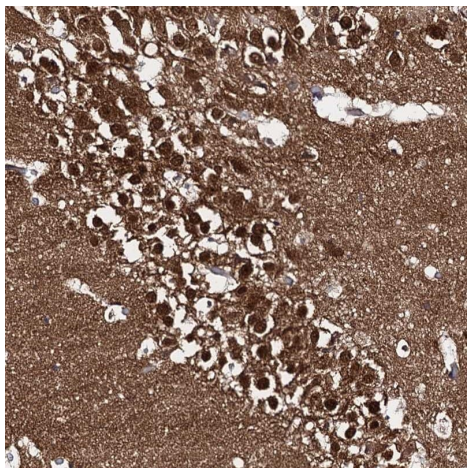
機能	May regulate the transport and translation of mRNAs, modulating for instance the expression of proteins involved in synaptic plasticity in neurons. Involved in regulation of growth as erythroblasts shift from a highly proliferative state towards their terminal phase of differentiation. May be involved in apoptosis.
組織特異性	Detected in all tissues tested with highest levels of expression in brain and spleen.
配列類似性	Belongs to the caprin family. Contains 1 C1q domain.
発生段階	Expression is highly regulated during erythroid development with increased expression at the stage of differentiation associated with the onset of global nuclear condensation and reduced cell proliferation.
細胞内局在	Cytoplasm; Mitochondrion. Colocalizes with aggregated mitochondria and Mitochondrion. Cytoplasm. Expressed throughout the cytoplasm.

画像



Immunocytochemistry/immunofluorescence analysis of human cell line U-251 MG labelling CAPRIN2 with ab122583 at 2 µg/mL.

Immunocytochemistry - Anti-CAPRIN2 antibody
(ab122583)



Immunohistochemistry (Formalin/PFA-fixed paraffin-embedded sections) analysis of human hippocampus tissue labelling CAPRN2 with ab122583 at 1/50 dilution. Heat mediated antigen retrieval performed with citrate buffer pH 6 before commencing with IHC staining protocol.

Immunohistochemistry (Formalin/PFA-fixed paraffin-embedded sections) - Anti-CAPRN2 antibody (ab122583)

Please note: All products are "FOR RESEARCH USE ONLY. NOT FOR USE IN DIAGNOSTIC PROCEDURES"

Our Abpromise to you: Quality guaranteed and expert technical support

- Replacement or refund for products not performing as stated on the datasheet
- Valid for 12 months from date of delivery
- Response to your inquiry within 24 hours
- We provide support in Chinese, English, French, German, Japanese and Spanish
- Extensive multi-media technical resources to help you
- We investigate all quality concerns to ensure our products perform to the highest standards

If the product does not perform as described on this datasheet, we will offer a refund or replacement. For full details of the Abpromise, please visit <https://www.abcam.co.jp/abpromise> or contact our technical team.

Terms and conditions

- Guarantee only valid for products bought direct from Abcam or one of our authorized distributors