




# Anti-Cannabinoid Receptor 1 antibody ab23703

★★★★★ [22 Abreviews](#) [102 References](#) [画像数 2](#)

### 製品の概要

製品名	Anti-Cannabinoid Receptor 1 antibody
製品の詳細	Rabbit polyclonal to Cannabinoid Receptor 1
由来種	Rabbit
アプリケーション	<b>適用あり:</b> IHC-P, ICC/IF, IHC-Fr
種交差性	<b>交差種:</b> Mouse, Rat, Dog, Human <b>交差が予測される動物種:</b> Cow, Chimpanzee, Macaque monkey 
免疫原	Synthetic peptide: MSVSTD TSAE AL , corresponding to C terminal amino acids 461-472 of Human Cannabinoid Receptor 1 (Peptide available as <a href="#">ab50542</a> .) <div>  <a href="#">Run BLAST with</a>  <a href="#">Run BLAST with</a> </div>
特記事項	<p>The Life Science industry has been in the grips of a reproducibility crisis for a number of years. Abcam is leading the way in addressing this with our range of recombinant monoclonal antibodies and knockout edited cell lines for gold-standard validation. Please check that this product meets your needs before purchasing.</p> <p>If you have any questions, special requirements or concerns, please send us an inquiry and/or contact our Support team ahead of purchase. Recommended alternatives for this product can be found below, along with publications, customer reviews and Q&amp;As</p>

### 製品の特性

製品の状態	Liquid
保存方法	Shipped at 4°C. Upon delivery aliquot and store at -20°C. Avoid freeze / thaw cycles.
バッファー	pH: 7.40 Preservative: 0.02% Sodium azide Constituents: Tris buffered saline, 50% Glycerol, 0.05% BSA
精製度	Protein A purified
ポリ/モノ	ポリクローナル
アイソタイプ	IgG

## アプリケーション

**The Abpromise guarantee**      **Abpromise保証は、** 次のテスト済みアプリケーションにおけるab23703の使用に適用されます  
アプリケーションノートには、推奨の開始希釈率がありますが、適切な希釈率につきましてはご検討ください。

アプリケーション	Abreviews	特記事項
IHC-P	★★★★☆ (7)	Use at an assay dependent concentration.
ICC/IF	★★★★☆ (4)	Use at an assay dependent concentration.
IHC-Fr	★★★★★ (2)	Use at an assay dependent concentration. Detection with an ABC system is recommended.

## ターゲット情報

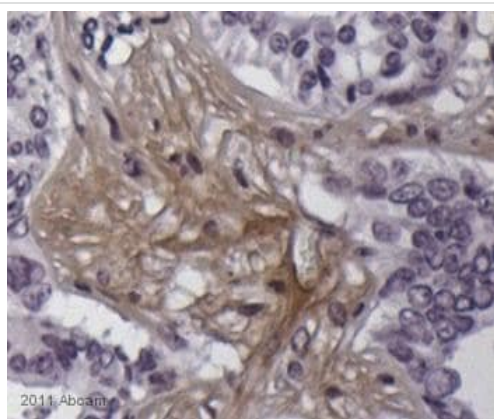
機能	Involved in cannabinoid-induced CNS effects. Acts by inhibiting adenylate cyclase. Could be a receptor for anandamide. Inhibits L-type Ca(2+) channel current. Isoform 2 and isoform 3 have altered ligand binding.
組織特異性	Widely expressed.
配列類似性	Belongs to the G-protein coupled receptor 1 family.
細胞内局在	Cell membrane.

## 画像



Immunohistochemistry (Formalin/PFA-fixed paraffin-embedded sections) - Anti-Cannabinoid Receptor I antibody (ab23703)

Immunoperoxidase staining of CA region of rat hippocampus with the Cannabinoid Receptor I antibody (ab23703, 4ug/ml). the majority of the protein is localized in the pre-synaptic axons, shown as brown particulae. A few neurons also show cytoplasm staining.



Immunohistochemistry (Formalin/PFA-fixed paraffin-embedded sections) - Anti-Cannabinoid Receptor I antibody (ab23703)

Courtesy of an anonymous Abreview

ab23703 staining Cannabinoid Receptor I in human pancreas tissue sections by Immunohistochemistry (IHC-P - paraformaldehyde-fixed, paraffin-embedded sections). Tissue was fixed with paraformaldehyde and blocked with 5% serum for 1 hour at room temperature; antigen retrieval was by heat mediation in a citrate buffer. Samples were incubated with primary antibody (1/50 in PBS) for 8 hours at 4°C. A Biotin-conjugated Goat anti-rabbit IgG polyclonal (1/1000) was used as the secondary antibody.

**Please note:** All products are "FOR RESEARCH USE ONLY. NOT FOR USE IN DIAGNOSTIC PROCEDURES"

### Our Abpromise to you: Quality guaranteed and expert technical support

---

- Replacement or refund for products not performing as stated on the datasheet
- Valid for 12 months from date of delivery
- Response to your inquiry within 24 hours
- We provide support in Chinese, English, French, German, Japanese and Spanish
- Extensive multi-media technical resources to help you
- We investigate all quality concerns to ensure our products perform to the highest standards

If the product does not perform as described on this datasheet, we will offer a refund or replacement. For full details of the Abpromise, please visit <https://www.abcam.co.jp/abpromise> or contact our technical team.

### Terms and conditions

---

- Guarantee only valid for products bought direct from Abcam or one of our authorized distributors