


Anti-CAND1 antibody ab101987

画像数 3

製品の概要

製品名	Anti-CAND1 antibody
製品の詳細	Rabbit polyclonal to CAND1
由来種	Rabbit
アプリケーション	適用あり: WB, IP, IHC-P
種交差性	交差種: Mouse, Human 交差が予測される動物種: Rat, Rabbit, Horse, Chicken, Guinea pig, Cow, Dog, Turkey, Pig, Chimpanzee, Rhesus monkey, Gorilla, Orangutan, Platypus 
免疫原	Synthetic peptide corresponding to Human CAND1 aa 1180-1230 (internal sequence). Database link: NP_060918.2
ポジティブ・コントロール	293T, NIH3T3 and HeLa cell lysates
特記事項	<p>The Life Science industry has been in the grips of a reproducibility crisis for a number of years. Abcam is leading the way in addressing this with our range of recombinant monoclonal antibodies and knockout edited cell lines for gold-standard validation. Please check that this product meets your needs before purchasing.</p> <p>If you have any questions, special requirements or concerns, please send us an inquiry and/or contact our Support team ahead of purchase. Recommended alternatives for this product can be found below, along with publications, customer reviews and Q&As</p>

製品の特性

製品の状態	Liquid
保存方法	Shipped at 4°C. Upon delivery aliquot and store at -20°C. Avoid freeze / thaw cycles.
バッファー	pH: 7 Preservative: 0.09% Sodium azide Constituent: Tris citrate/phosphate
精製度	Immunogen affinity purified
ポリ/モノ	ポリクローナル
アイソタイプ	IgG

アプリケーション

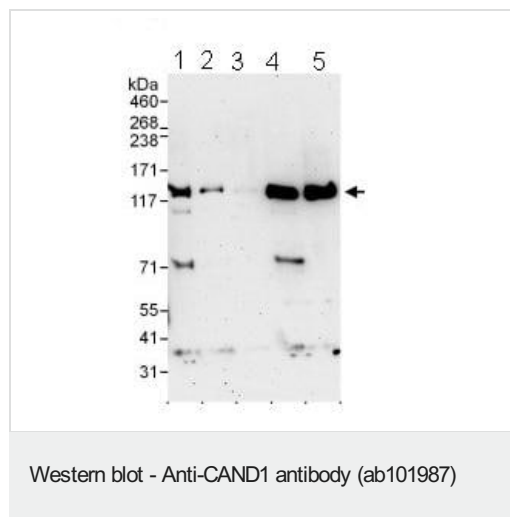
The Abpromise guarantee **Abpromise保証は、** 次のテスト済みアプリケーションにおけるab101987の使用に適用されます
 アプリケーションノートには、推奨の開始希釈率がありますが、適切な希釈率につきましてはご検討ください。

アプリケーション	Abreviews	特記事項
WB		1/2000 - 1/10000. Predicted molecular weight: 136 kDa.
IP		Use at 2-5 µg/mg of lysate.
IHC-P		1/1000 - 1/5000. Perform heat mediated antigen retrieval with citrate buffer pH 6 before commencing with IHC staining protocol.

ターゲット情報

機能	Enhances transcription from various types of promoters (By similarity). Regulatory protein that interferes with the assembly of the SCF (SKP1-CUL1-F-box protein) ubiquitin ligase complex and thereby down-regulates ubiquitination of target proteins. Prevents neddylation of CUL1 by physically blocking access to the neddylation site. Disrupts interactions between CUL1 and SKP1 and between CUL1 and F-box proteins.
配列類似性	Belongs to the CAND family. Contains 27 HEAT repeats.
細胞内局在	Nucleus.

画像



All lanes : Anti-CAND1 antibody (ab101987) at 0.1 µg

Lane 1 : HeLa cell lysate at 50 µg

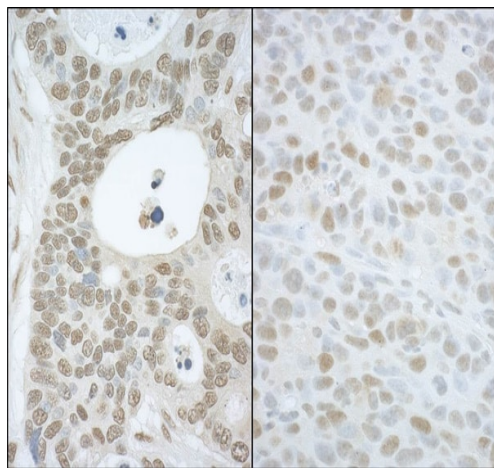
Lane 2 : HeLa cell lysate at 15 µg

Lane 3 : HeLa cell lysate at 5 µg

Lane 4 : 293T cell lysate at 50 µg

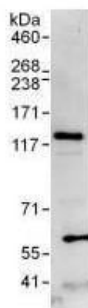
Lane 5 : NIH3T3 cell lysate at 50 µg

Predicted band size: 136 kDa



Immunohistochemistry (Formalin/PFA-fixed paraffin-embedded sections) - Anti-CAND1 antibody (ab101987)

Immunohistochemistry (Formalin/PFA-fixed paraffin-embedded sections) analysis of human ovarian carcinoma (left) and mouse hybridoma tumor (right) tissues labelling CAND1 with ab101987 at 1/5000 (0.2µg/ml) and 1/1000 (1µg/ml). Detection: DAB.



Immunoprecipitation - Anti-CAND1 antibody (ab101987)

Detection of CAND1 by Western blot of Immunoprecipitate. ab101987, at 1 µg/ml, staining CAND1 in HeLa whole cell lysate immunoprecipitated using ab101987 at 3 µg/mg lysate (1 mg/IP; 20% of IP loaded/lane). Detection: Chemiluminescence with an exposure time of 30 seconds.

Please note: All products are "FOR RESEARCH USE ONLY. NOT FOR USE IN DIAGNOSTIC PROCEDURES"

Our Abpromise to you: Quality guaranteed and expert technical support

- Replacement or refund for products not performing as stated on the datasheet
- Valid for 12 months from date of delivery
- Response to your inquiry within 24 hours
- We provide support in Chinese, English, French, German, Japanese and Spanish

- Extensive multi-media technical resources to help you
- We investigate all quality concerns to ensure our products perform to the highest standards

If the product does not perform as described on this datasheet, we will offer a refund or replacement. For full details of the Abpromise, please visit <https://www.abcam.co.jp/abpromise> or contact our technical team.

Terms and conditions

- Guarantee only valid for products bought direct from Abcam or one of our authorized distributors