

# Anti-CAMKV antibody ab69564

**1 References** [画像数 3](#)

### 製品の概要

---

製品名	Anti-CAMKV antibody
製品の詳細	Rabbit polyclonal to CAMKV
由来種	Rabbit
アプリケーション	<b>適用あり:</b> WB, IHC-P, ICC/IF
種交差性	<b>交差種:</b> Human
免疫原	Synthetic peptide derived from an internal sequence of human CAMKV.
特記事項	<p>The Life Science industry has been in the grips of a reproducibility crisis for a number of years. Abcam is leading the way in addressing this with our range of recombinant monoclonal antibodies and knockout edited cell lines for gold-standard validation. Please check that this product meets your needs before purchasing.</p> <p>If you have any questions, special requirements or concerns, please send us an inquiry and/or contact our Support team ahead of purchase. Recommended alternatives for this product can be found below, along with publications, customer reviews and Q&amp;As</p>

### 製品の特性

---

製品の状態	Liquid
保存方法	Shipped at 4°C. Upon delivery aliquot and store at -20°C. Avoid freeze / thaw cycles.
バッファー	pH: 7.4 Preservative: 0.02% Sodium azide Constituents: 50% Glycerol, 0.87% Sodium chloride, PBS
精製度	Without Mg <sup>2+</sup> and Ca <sup>2+</sup> Immunogen affinity purified
ポリ/モノ	ポリクローナル
アイソタイプ	IgG

### アプリケーション

---

**The Abpromise guarantee**

**Abpromise保証は、次のテスト済みアプリケーションにおけるab69564の使用に適用されます**

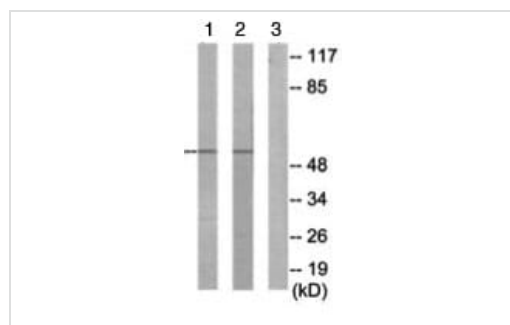
アプリケーションノートには、推奨の開始希釈率がありますが、適切な希釈率につきましてはご確認ください。

アプリケーション	Abreviews	特記事項
WB		1/500 - 1/1000. Detects a band of approximately 54 kDa (predicted molecular weight: 54 kDa).
IHC-P		1/50 - 1/100.
ICC/IF		1/500 - 1/1000.

## ターゲット情報

機能	Does not appear to have detectable kinase activity.
配列類似性	Belongs to the protein kinase superfamily. CAMK Ser/Thr protein kinase family. Contains 1 protein kinase domain.
ドメイン	The protein kinase domain is predicted to be catalytically inactive.
細胞内局在	Cell membrane. Cytoplasmic vesicle membrane. Predominantly observed in association with the plasma membrane of soma and in neurites, both axons and dendrites. May be associated with vesicular structures (By similarity).

## 画像



Western blot - Anti-CAMKV antibody (ab69564)

**All lanes :** Anti-CAMKV antibody (ab69564) at 1/500 dilution

**Lane 1 :** HepG2 cells extracts

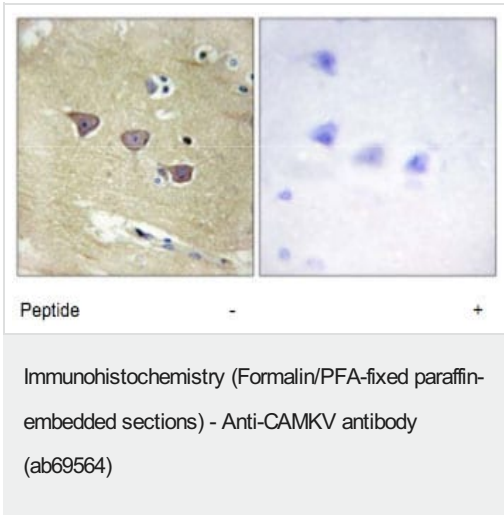
**Lane 2 :** HUVEC cells extracts

**Lane 3 :** HepG2 cells extracts with immunizing peptide at 10 µg

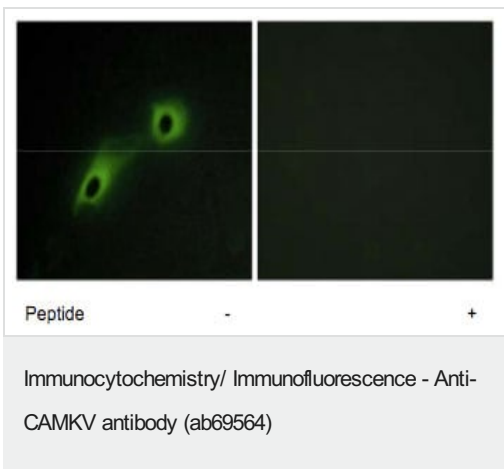
Lysates/proteins at 30 µg per lane.

**Predicted band size:** 54 kDa

**Observed band size:** 54 kDa



Immunohistochemistry analysis of paraffin-embedded human brain tissue using 1/50 ab69564. For the image on the right, the antibody was pre-incubated with the immunizing peptide.



Immunofluorescence analysis of HeLa cells, using 1/500 ab69564. For the image on the right, the antibody was pre-incubated with the immunizing peptide.

**Please note:** All products are "FOR RESEARCH USE ONLY. NOT FOR USE IN DIAGNOSTIC PROCEDURES"

### Our Abpromise to you: Quality guaranteed and expert technical support

- Replacement or refund for products not performing as stated on the datasheet
- Valid for 12 months from date of delivery
- Response to your inquiry within 24 hours
- We provide support in Chinese, English, French, German, Japanese and Spanish
- Extensive multi-media technical resources to help you
- We investigate all quality concerns to ensure our products perform to the highest standards

If the product does not perform as described on this datasheet, we will offer a refund or replacement. For full details of the Abpromise, please visit <https://www.abcam.co.jp/abpromise> or contact our technical team.

### Terms and conditions

- Guarantee only valid for products bought direct from Abcam or one of our authorized distributors