


Anti-CAMKIV antibody [EP2564Y] ab75874

RabMAb

1 References [画像数 1](#)

製品の概要

製品名	Anti-CAMKIV antibody [EP2564Y]
製品の詳細	Rabbit monoclonal [EP2564Y] to CAMKIV
由来種	Rabbit
アプリケーション	適用あり: WB 適用なし: Flow Cyt, IHC-P or IP
種交差性	交差種: Human 交差が予測される動物種: Mouse, Rat 
免疫原	Synthetic peptide. This information is proprietary to Abcam and/or its suppliers.
ポジティブ・コントロール	WB: Jurkat whole cell lysate and Human brain lysate.
特記事項	Our RabMAb [®] technology is a patented hybridoma-based technology for making rabbit monoclonal antibodies. For details on our patents, please refer to RabMAb[®] patents . The Life Science industry has been in the grips of a reproducibility crisis for a number of years. Abcam is leading the way in addressing this with our range of recombinant monoclonal antibodies and knockout edited cell lines for gold-standard validation. Please check that this product meets your needs before purchasing. If you have any questions, special requirements or concerns, please send us an inquiry and/or contact our Support team ahead of purchase. Recommended alternatives for this product can be found below, along with publications, customer reviews and Q&As

製品の特性

製品の状態	Liquid
保存方法	Shipped at 4°C. Upon delivery aliquot and store at -20°C. Avoid freeze / thaw cycles.
バッファー	pH: 7.20 Preservative: 0.01% Sodium azide Constituents: 59% PBS, 40% Glycerol (glycerin, glycerine), 0.5% BSA
精製度	Protein A purified
ポリ/モノ	モノクローナル
クローン名	EP2564Y

アイソタイプ

IgG

アプリケーション

The Abpromise guarantee

Abpromise保証は、次のテスト済みアプリケーションにおけるab75874の使用に適用されます

アプリケーションノートには、推奨の開始希釈率がありますが、適切な希釈率につきましてはご検討ください。

アプリケーション	Abreviews	特記事項
WB		1/1000 - 1/2000. Predicted molecular weight: 52 kDa.

追加情報

Is unsuitable for Flow Cyt, IHC-P or IP.

ターゲット情報

機能

Calcium/calmodulin-dependent protein kinase belonging to a proposed calcium-triggered signaling cascade. May be involved in transcriptional regulation. May be involved in regulation of microtubule dynamics. In vitro, phosphorylates CREB1, CREBBP, PRM2, MEF2A, MEF2D and STMN1/OP18. May be involved in spermatogenesis. May play a role in the consolidation/retention of hippocampus-dependent long-term memory.

組織特異性

Expressed in epithelial ovarian cancer tissue.

配列類似性

Belongs to the protein kinase superfamily. CAMK Ser/Thr protein kinase family. CaMK subfamily. Contains 1 protein kinase domain.

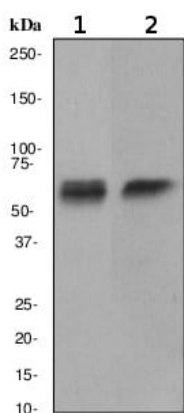
翻訳後修飾

Autophosphorylated and phosphorylated by CAMKK1 and CAMKK2 (By similarity). Dephosphorylated by serine/threonine protein phosphatase 2A, probably on Thr-200.

細胞内局在

Cytoplasm. Nucleus. Substantial localization in certain neuronal nuclei. In spermatids associated with chromatin and nuclear matrix.

画像



Western blot - Anti-CAMKIV antibody [EP2564Y]
(ab75874)

All lanes : Anti-CAMKIV antibody [EP2564Y] (ab75874) at 1/2000 dilution

Lane 1 : Jurkat cell lysate

Lane 2 : Human brain lysate

Lysates/proteins at 10 µg per lane.

Secondary

All lanes : Goat anti-rabbit HRP at 1/1000 dilution

Predicted band size: 52 kDa

Observed band size: 60 kDa

Please note: All products are "FOR RESEARCH USE ONLY. NOT FOR USE IN DIAGNOSTIC PROCEDURES"

Our Abpromise to you: Quality guaranteed and expert technical support

- Replacement or refund for products not performing as stated on the datasheet
- Valid for 12 months from date of delivery
- Response to your inquiry within 24 hours

- We provide support in Chinese, English, French, German, Japanese and Spanish
- Extensive multi-media technical resources to help you
- We investigate all quality concerns to ensure our products perform to the highest standards

If the product does not perform as described on this datasheet, we will offer a refund or replacement. For full details of the Abpromise, please visit <https://www.abcam.co.jp/abpromise> or contact our technical team.

Terms and conditions

- Guarantee only valid for products bought direct from Abcam or one of our authorized distributors